

Old-fashioned Tank Heater Back In Style

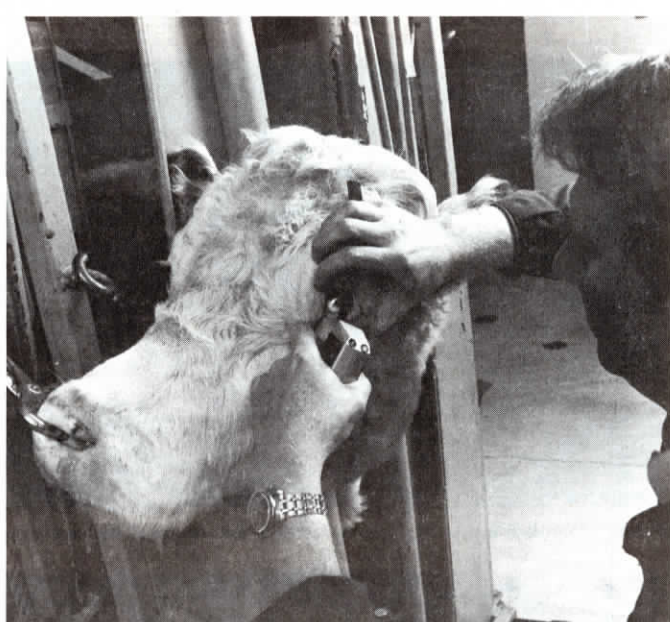
Popular demand has prompted Big John Manufacturing, Osmond, Neb. to put their popular "old-fashioned" Heat King tank heater back on the market.

New models now rolling off the assembly line burn cobs, wood, or coal and feature built-in heating and circulating tubes, a Heat King exclusive. "So far as we know, it's the only water circulating tank heater on the market," Robert Arnold, manager, told FARM SHOW. Specifications are: 18 x 18 x 24 in. fire box made of 12 ga. steel; 10 x 5 x 9 in. heating chamber with no-clog double baffle draft plates; and a shipping weight of 128 lbs. "It holds 4 bu. of corn cobs—enough to provide about 12 hrs. of heat," Arnold explains.

For more details, contact: FARM SHOW Followup, Big John Manufacturing, Box 456, Osmond, Neb. 68765 (ph 402 748-3860 or 3868).



Heat King burns wood, cobs or coal and is equipped with built-in water heating and circulating tubes.



A 12 volt battery powers the cancer-killing tool. Can be plugged into car or truck cigarette lighter.

HAS 90% SUCCESS RATE

Cancer-Killing Tool Developed For Cattle

Cure rates exceeding 90% are claimed for a new hand-held do-it-yourself device that kills cancer eye cells in cattle with heat generated by a high frequency electrical current.

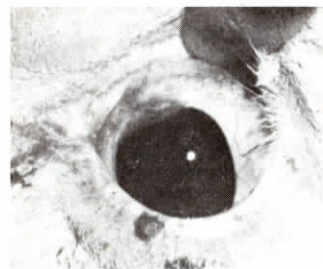
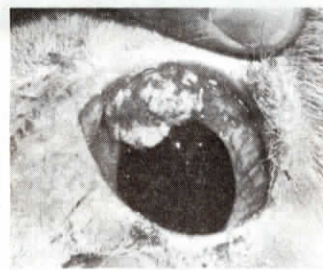
The device, introduced by Hach Chemical Co., Ames, Iowa, works on the principle that cancer cells are usually more susceptible to damage than normal cells and that they will die when heated above normal body temperature.

For treatment, the affected animal is put into a squeeze chute or otherwise secured and an anesthetic applied to the eye. The eye is then immobilized with a spoon-like instrument which is slipped behind the eye in the socket.

Electrodes of the tool, called a Thermoprobe, are placed directly on the cancer eye tumor. When turned on, a high-frequency electric current is passed between the electrodes and thus through the tissue, heating it to treatment temperature. The tissue's resistance to the flow of electrical current heats it up with no sensation of electrical shock because of the high frequency.

The manufacturer notes that tumors up to about 3/4 in. in dia. are normally cured in 4 to 8 weeks following a single treatment. Larger tumors may need a second treatment, or have to be trimmed beforehand since heat from the Thermoprobe only penetrates 1/8 in. into the tissue.

In a study of 200 cattle treated by the Thermoprobe tool, researchers at the Los Alamos Scientific Laboratory in New Mexico reported no evidence of tumor recurrence. The researchers



Photos show infected eye "before" treatment, and 6 weeks "after" treatment with new tool.

conducted followup investigations 3 months to 1 year after treatment.

The complete Thermoprobe kit, including the tool itself, a 12-volt battery and charger, and a carrying case, sells for \$500. The same kit, minus the battery and charger but with a hook-up for a truck cigarette lighter receptacle, sells for \$410.00.

For more details, contact: FARM SHOW Followup, Lynn R. Loken, Director, Agricultural Division, Hach Chemical Company, Box 907, Ames, Iowa 50010 (ph 515 232-2533).

SEE-THROUGH MESH CONSTRUCTION ADDS EXTRA CAPACITY CARRYING

Bin Extensions For Combines

"We can build bin extensions for any combine if we have the interior dimensions and know what kind of grain the extension will be used for," says Merle Bamesberger, Hampton, Neb., inventor-manufacturer of a simple all-steel bin extension for combines.

The see-through extension units are available in a 3/16 in. expanded metal mesh for holding small grains or milo, or 1/4 in. mesh for corn and soybeans.

"We custom build the extensions pretty much the way each customer wants them," Bamesberger told FARM SHOW. In most cases, the extensions for combine bins are 18 to 24 in. high. "That gives quite a bit of added capacity without making combines top heavy, or too tall to drive into storage sheds."

One extension Bamesberger built last year for a 7700 Deere combine had flared sides and extended 40 in. above the bin. It increased bin capacity about 240 bu.

One advantage of the metal mesh bin extension is that you can see the grain and know when to unload. And, you don't have to get out of the combine to level the grain in the

hopper because the extension allows grain to fill completely to the top of the factory-built bin, and beyond.

Although Bamesberger primarily builds bin extensions for combines, he will custom build them for most any gravity wagon or truck box. "It's just a matter of making an extension to fit the given dimensions."

The extensions are constructed with 1 in. tubular frame which is bolted to the combine by the farmer. Bamesberger adds additional bracing where needed to carry the extra load capacity each combine owner feels his machine can handle.

In custom building bin extensions, Bamesberger also adds any special feature a customer may want, such as adding flared sides. Prices start at about \$175 for an 18 in. bin extension. In most cases, orders are shipped within two weeks or less.

Bamesberger notes that he relies solely on word-of-mouth advertising and doesn't have product literature to mail out. However, he will answer inquiries.

For more details, contact: FARM SHOW Followup, Merle Bamesberger, Hampton, Neb., 68843 (ph 402 725-3434).