

Wrap-Around Tracks Out-Perform 4-WD, Duals

Those wrap-around tractor and combine tracks we first told you about last winter (Vol. 10, No. 1) are selling like hotcakes as another harvest approaches.

One farmer who's tried them says he bought them for his New Holland TR70 combine this spring to harvest corn still in the fields after rain turned his fields into mud bogs last fall. "It worked its way through ground you couldn't even walk through. If I had had these last fall, I could have finished harvest," says Russell Leichtfuss, who farms near Fond du Lac, Wis. He also bought a set of tracks for his tractor.

The specially cleated tracks wrap around the outer circumference of the tire. The cleats, 4 in. by 6 in. and made out of 3/8-in. thick angle iron, are a couple inches wider than the tire. Because each cleat flexes on individual hinges, the tracks self-clean.

Manufacturer Jim Vanderloop, of Modern Agri-Systems, says the tracks get equipment through conditions that duals and 4-WD can't handle. "One farmer was pulling a forage chopper through a field with Cat Tracks and had a big 4-WD tractor standing by to help. The 4-WD got stuck and the smaller 2-WD with Cat Tracks pulled it out."



Each track cleat flexes independently to self-clean.

In addition to tractors and combines, Vanderloop also makes tracks to fit irrigation system drivewheels. Prices range from \$1,100 to \$4,500.

For more information, contact: FARM SHOW Followup, Modern Agri-Systems, W. 2817 Dundas Rd., Brillion, Wis. 54110 (ph 414 766-5785).

HELPS PREVENT VALVE DAMAGE

Additive Makes No-Lead Gas Safe For Old Engines

Many gas engines built before the early 1970's for use with leaded gasoline suffer damage when used with no-lead gas. Valve seats, made with softer metals in those older engines, deteriorate rapidly when levels in gas fall below about 0.1 gram. Last January, the Federal government reduced lead in gas to 0.1 gram or less and on January 1, 1988, it will be eliminated altogether.

Red Line Synthetic Oil Corp. is one of the first companies to come out with an additive that'll take the place of lead in gas. According to the company, their lead substitute—added at the rate of 12 oz. per 120 gal. of fuel—brings no-lead up to the 0.1 gram of lead per gal. level which protects against valve seat recession. At \$4.95 per 12 oz. bottle, it treats gas at a rate of 4 cents per gallon.

Although little independent testing has been done on such lead substitutes, other companies are readying products for market, including big oil companies. A spokesman for Phillips Petroleum, Bartlesville, Okla., told FARM SHOW the company has decided to come out with its own additive, which actually consists of lead. "Rather than using a substitute

product, we're trying to get approval from the EPA to make a true lead additive available to people with older gas engines. We don't think the intent of the law banning lead was to punish people with older gas engines. Studies show that over half the tractors still in use on the farm are gas-powered."

Phillips hopes to have its lead additive, called Valvepro, on the market within months.

Jack True, extension engineer at the University of Minnesota, told FARM SHOW he had not seen any test results on lead additives and would not speculate on whether or not they would perform as promised. "There is a problem with older engines when used with low lead gas, both with valve seat wear and spark knock. You can eliminate the valve seat wear problem on some engines by replacing the valve seats with longer wearing replacements," notes True.

For more information, contact: FARM SHOW Followup, Red Line Synthetic Oil Corp., 3450 Pacheco Blvd., Martinez, Calif. 94553 (ph 415 228-7576).

GREAT FOR NO-TILL, NARROW BLADE BARELY DISTURBS SOIL SURFACE

Swivel-Mounted Anhydrous Knife

"Great for no-till ground. Doesn't tear up the surface like most anhydrous knives," says Mark Siepel, Yetter Manufacturing, about the company's new swivel-mounted narrow blade anhydrous knife.

Each applicator unit consists of a narrow 1/4-in. wide shank that follows a 20-in. spring-mounted coulter. Coulter and shank pivot 30° on mounting shaft. "It takes the stress off the shank. Most applicators have big, heavy-duty shanks to take the stress of cornering. They work fine but tear up the soil surface and require more horsepower," says Siepel.

Shanks, which are hard-surfaced along the front edge, can be easily replaced. Mounting bracket attaches to any toolbar. Sells for \$295 per unit.

For more information, contact: FARM SHOW Followup, Yetter Manufacturing Co., Colchester, Ill. 62326 (ph toll-free 800 447-5777 or, in Ill., 800 325-7165).



Up-front swivel lets narrow 1/4-in. wide shank and cutter swivel up to 30°.

ALSO HANDY FOR PAINTING, VET WORK AND OTHER JOBS

Disposable Coveralls For Chemical Protection

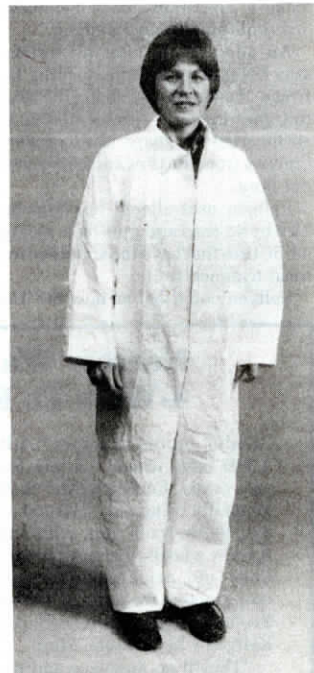
For less than \$4 you can protect yourself and your clothing from chemicals, paint, blood and other staining or dangerous materials with disposable coveralls from Gempler's, of Monroe, Wis.

The white, tear-resistant, zip-up coveralls weigh 5-oz. and are made of Tyvek, a non-woven, synthetic material manufactured by DuPont. "The material offers a high-level barrier against even the finest spray particles," says Steve Schlecht, president of Gempler's. "The coveralls also offer low-cost protection when doing veterinarian and AI work, handling grain, applying fertilizer, painting and other jobs. They can also be used as rain gear."

Gempler's also offers yellow poly laminated coveralls. These weigh 9 oz. and are also made of Tyvek, but have an extra layer of polyethylene for added protection against chemical splashes. They also have a drawstring hood and elastic sleeves and legs.

Both styles are tear-resistant and machine-washable. However, if they become contaminated with chemicals they should be thrown away, notes Schlecht.

The cheaper white coveralls are available in 5 different sizes and sell for \$3.95 each. A case of 24 sells for \$83.76 (\$3.49 each). The yellow poly laminated coveralls sell for \$12.49 each.



White coveralls come in 5 sizes and sell for \$3.95 each.

For more information, contact: FARM SHOW Followup, Gempler's, P.O. Box 58, 706 Third Ave., Monroe, Wis. 53566 (ph 800 382-8473; in Wis. 800 362-8898).