

**USE IT ALSO AS A DOZER, MANURE FORK, ROCK PICKER AND MORE**

## Loader-Mounted Bucket Works Like A Backhoe

"It'll do everything a backhoe can do and more," says Trevor Goodger-Hill, distributor of the BenBucket, a unique new backhoe-like bucket that's designed to fit any conventional tractor loader.

"The bucket is 5 ft. wide, holds about 1/4 cu. yard and will dig almost effortlessly through most soils to a depth of about 7 ft. For digging narrow trenches, you can dig from the side," explains Goodger-Hill.

Visibility is generally better than a backhoe, too, according to Goodger-Hill, noting that the BenBucket reaches out about 10 ft. in front of the tractor, 15 ft. above it and 7 ft. below.

Besides digging or cleaning out ditches, the bucket can be used for many other tasks, such as backfilling, dozing, hauling manure (since the hydraulics load the bucket, there's less tendency for the front wheels to sink in), and any other bucket work around the farm. An optional fork, which operates in the same manner as the BenBucket, is "great for digging large rocks out of the field and even raking the surface for smaller rocks," according to Goodger-Hill.

"For almost any job you'll find that the tractor is running at a lower rpm than when using a regular loader without the bucket. When hauling gravel, for instance, you don't have to charge the pile as with a conventional loader. You simply drive up to it and lower the bucket into it hydraulically. Another advantage is that with its long reach it'll stretch up over the sides of lagoons, high wagons and spreaders."

The BenBucket weighs about 500 lbs. and requires only the welding of two small brackets to the existing loader for installation. The brackets do not interfere with regular operation of the loader. Once installed, the loader can be removed at any time by



**BenBucket digs straight-sided holes, trenches 7 ft. deep.**

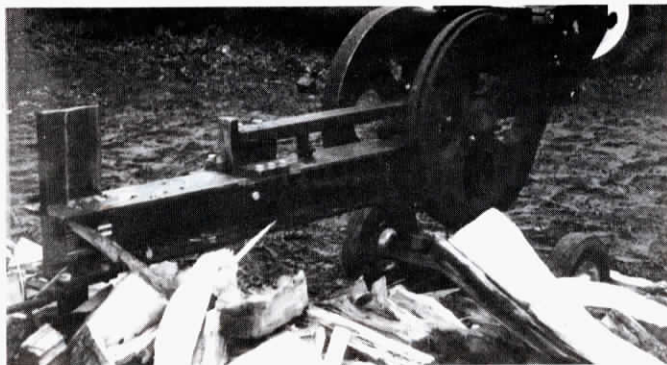
simply pulling four pins. On some loaders, it may also be necessary to remove or relocate the loader parking legs to permit attachment of the BenBucket frame. The two hydraulic valves regularly used to raise the loader, and to dump it, are used to control operation of the BenBucket's double-acting cylinder.

Retails for \$1,495, (Canadian dollars).

For more information contact: FARM SHOW Followup, T. Goodger-Hill, Depot Source II, Norbertville, Quebec, Canada (ph 819 382-2396).



**An optional fork, which mounts in place of the bucket, is "great for digging rocks out of fields or handling manure," according to the manufacturer.**



**Two flywheels drive the splitting shaft, and a spring pulls it back. A safety shield ordinarily encloses the wheels.**

### "FASTEST SPLITTER MADE"

## Hammer-Action Splitter Pounds Logs To Pieces

"This splitter is like swinging a 10-ton ax," says the manufacturer of the new "Super Split", a flywheel-powered log splitter that may be the fastest splitter anywhere.

John Nicholls, Canadian distributor, explained to FARM SHOW that the new splitter gets its power from a heavy flywheel, and its quick, 2-sec. cycle time from its unusual rack and pinion gear drive.

"Compared to hydraulic, worm shaft and screw-type splitters, the Super Split is faster, safer, more powerful and more reliable. Our 3 hp. gas or 1/4 hp. electric motor models deliver the power of a 9 hp. hydraulic splitter, and have a 10 to 14 ton force during the splitting stroke."

Here's how the new splitter works:

A pair of flywheels, connected by a one-piece pinion gear shaft, is turned by a V-belt from the gasoline engine or electric motor. Because of the flywheel weight, and the high rpm's, the shaft gear has lots of power. To activate the splitter, a rack is lowered onto the shaft gear and engaged by a cam-lock method. The gear drives the rack out at a speed of 1.2 ft. per second to split the wood. The rack is spring-loaded so, at the end of its stroke, it lifts up, disengaging itself and pulling all the way back in a half second. The rack can be activated again and again by pulling on the splitter handle. This gives it its hammer action and makes it, according to Nicholls, "15 times faster than many hydraulic splitters".

"Because of the hammer action, we're even able to split logs across the grain, if necessary, something no other splitter I know of can do. However, we don't recommend that the splitter be used this way regularly as it's hard on the equipment," says Nicholls.

The Super Split handles logs up to 25 1/2 in. long, weighs 250 lbs., and comes outfitted with high-speed road tires. Retails for \$1,595 (Canadian).

For a complete information packet, send \$2 to: FARM SHOW Followup, Nicholls Farm Equipment Ltd., John Nicholls, Dunnville, Ontario, Canada (ph 416 774-4896).

**FARM SHOW**  
For everyone in agriculture interested in latest new products.

**Vol. 6, No. 1, 1982**

**Editor-Publisher** — Harold M. Johnson

**Managing Editor** — Mark Newhall

**Associate Editor** — Lonnie Stauffer

**Office Manager** — Joan C. Johnson

**FARM SHOW** is published bimonthly for \$9.95 per year (\$11.95 in Canada and foreign countries) by Farm Show Publishing Inc., P.O. Box 704, 8500 210 St., Johnson Bldg., Lakeville, Minn. 55044. Second class postage paid at Lakeville, Minn., and Madelia, Minn. POSTMASTER: Send address changes to FARM SHOW, Box 704, Lakeville, Minn. 55044 (ph 612 469-3303). Single copy price is \$2.00. Publication No. 470870

**FARM SHOW** does not accept advertising and focuses exclusively on new products and product evaluations.

**FARM SHOW** does not charge for new products or services featured in the magazine. Anyone with a new product or service of interest to farmers — whether inventor, manufacturer, marketer, distributor or whatever — is invited to contact FARM SHOW regarding possible publication.

**FARM SHOW** attempts to verify product claims in editorial reports and adheres to rigid standards. However, the publisher assumes no responsibility for accuracy and validity of claims.

Printed in U.S.A. All rights reserved, including the right of reproduction, in whole or in part, without written permission.