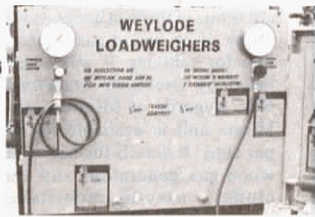


Truck-Mounted Scale Eliminates Guesswork

"I don't know of anything like it in the U.S. or Canada," says Jim Wilkie of Bristol, England, inventor and manufacturer of the Weylode Loadweigher, an uncomplicated weigh scale for farm trucks, dump wagons and tractor loaders that simply measures hydraulic back pressure to weigh loads with 98% accuracy — without an expensive, drive-over scale.



"You can use one gauge on as many pieces of equipment as desired by permanently installing hydraulic hose adapters in each and snap coupling the gauge as needed," says Wilkie.

"This scale is especially useful for on-farm storage. Farmers can turn any truck into a large capacity weighing machine and keep an accurate account of yields and inventories. It also lets you estimate loads before delivering them to market."

Loadweighers come in kit form with 1/2 or 3/8-in. dia. adapters. A kit with one gauge and two adapters, and complete instructions, sells for around \$230. Tractor loaders require special adapters, especially those with non-standard operating pressures. A permanently mounted Loadweigher is also available for trucks, if desired.

For more information, contact: FARM SHOW Followup, Jim Wilkie, Weylode, Horton, Nr. Bristol, England BS17 6QY (ph 0454 313305).

The Loadweigher "T's" into the hydraulic line running from the cylinder to the hydraulic pump, whether on tractor or truck. To weigh a load of grain, for example, you raise the box to a specific height until two marker plates line up. The back pressure, read by the gauge, is proportional to the weight of the load at that point, and is looked up on a simple calibration chart. No further calculations are needed.

"Results are most accurate with a full load, but if the load is distributed evenly and the truck box tilted to the correct height, the scale will be uniformly accurate to within 2% of the carrying capacity," Wilkie told FARM SHOW.

The Loadweigher is calibrated by attaching the two marker plates and raising a known weight to the marked height. Using that reading, you can draw up a calibration chart. No adjustments to the quick-tach scale itself are needed.

Front Wheel Domes For Silage, Mud

It's like having a set of snap-on flotation tires to get out of "sticky" or impossible situations, say the manufacturers of new quick-tach "Roam-A-Domes" for front tractor wheels.

"We developed them primarily for packing and working silage but have found them to be effective anywhere the going is tough," Alan Grimshaw, sales representative for Lawrence Edwards and Co., Ltd., told FARM SHOW. "We first made them with fiberglass but that wasn't strong enough. Now, they're made of a 10-ga. spun steel that's held up under all testing conditions."

The domes, introduced earlier this year, are already being widely used in bunker silos both to pack silage as well as a way to keep from "rutting" the pile and thereby ruining a certain amount of silage. "They'll also let you carry a full load in your tractor loader, saving both time and fuel," points out Grimshaw. Because Roam-A-Domes are smaller in diameter than the wheels, on firm ground the wheels carry all the weight. In mud, manure or silage, weight distributes evenly over the width of the domes.

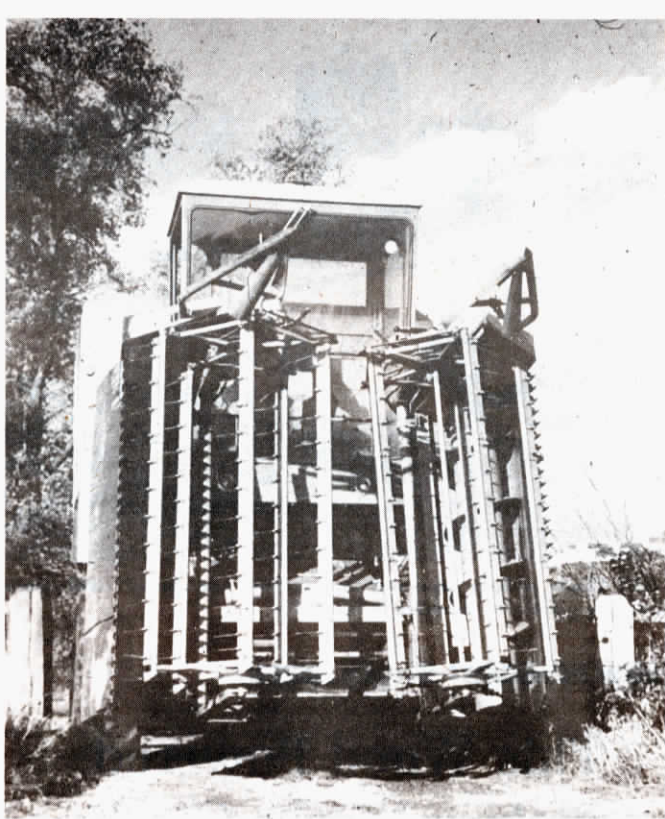


Wheel domes are widely used in Europe to pack silage in trenches, bunkers.

A set of brackets and a tension bar are bolted permanently to the wheel using the wheel stud bolts. Domes quickly fasten to these when needed with a single extension bolt.

Domes fit all standard 16-in. wheels and retail in England for around \$275 a pair.

For more information, contact: FARM SHOW Followup, Lawrence Edwards Co., Ltd., Stourport Road, Kidderminster, Worcestershire, England.



"There's no reason this foldup header can't be adapted to other makes of combines," says the manufacturer.

18-FT. HEADER FOLDS TO 9-FT. ROAD WIDTH

Fold-Up Header First Of Its Kind

You've never seen anything like this fold-up header from England that's caught the attention of some American manufacturers who think it may be the solution to the problem of too-wide headers on too-narrow roads. With just the touch of a lever, this new 18 ft. header folds to a road width of just 9 ft.

"Hydraulic fold-up eliminates the need for a separate trailer to haul the header around. You can move quickly from one field to another and through gates without having to remove the header. Header fold-up takes just eight seconds," says Richard Munns, sales representative for Fisher Humphries, Ltd., manufacturer of the innovative header.

Although the new header has been available on a limited basis for a number of years, the company only recently decided to go into full production and has shown the unit at two large farm shows. They plan to produce around 100 units in 1980, all mounted on their hydrostatic Lely Victory combine.

"Besides the fold-up advantage, this header is actually a better header because it's built in two pieces," Munns told FARM SHOW. "The cutterbar, in two halves, with a separate wobble box drive at each end, has

vastly reduced the load to the whole assembly and increased the header's workload capacity."

The reel is also in two halves, each driven by its own hydraulic motor. They're synchronized, however, so their speeds are constant, although infinitely variable. The 54-in. reel also adjusts up and down hydraulically as well as forward and back, and can even be moved forward to a position 4 in. below the cutterbar to pick up down or damaged crops. To fold the reel, the operator lifts one side at a time, with cab-mounted controls. Two cylinders, mounted on the feederhouse, provide the lift.

"There's no reason this header could not be adapted to other make combines. Up to this point, however, we've concentrated on our own Lely Victory combines. The design is covered by patents all over the world," Munns told FARM SHOW. The Fisher-Humphries Victory is a fully hydrostatic combine that's been on the market for more than a decade.

For more information on the folding header, contact: FARM SHOW Followup, Fisher-Humphries Ltd., division British Lely, Ltd., White Hill Lane, Wootton Bassett, Wiltshire, England SN4 7DB.