

LETS YOU PLANT MORE ACRES PER DAY

Fast Way To Fill Planters, Drills

Here's a speedy new way to load planters and drills with seed or fertilizer — the new Drill-Fill System from D & B Fabricators, Fargo, N. Dak.

"As easy as turning on a water faucet when used for filling planters or grain drills," says Jim Bucholtz, sales manager. "And, during harvest, the bins can be used to haul grain."

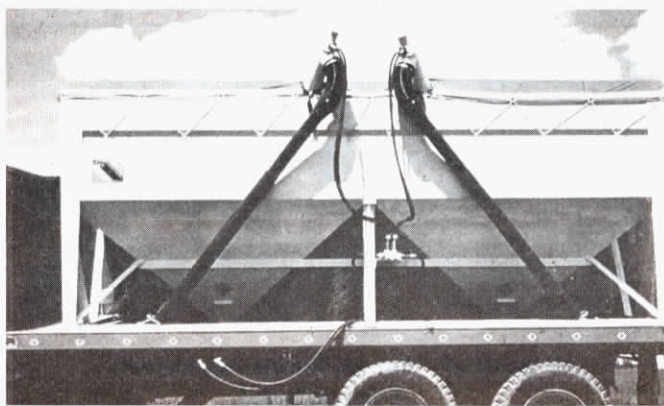
The Drill-Fill System consists of single or double tanks that sit on truck beds, or inside truck grain boxes, and are unloaded by hydraulic augers. The augers easily handle fertilizers and grain and will also unload most feeds, according to the company representative: "Finely ground feeds might cause problems but pellets will run through the system easily," explains Bucholtz.

Drill-Fill bins are built into frames that sit squarely on truck beds and

slip into most boxes without removing the sides. Bins come in 7, 8 and 9-ft. sq. sizes with capacities from 175 bu. seed (or 6½ tons fertilizer) to 220 bu. seed (8 tons fertilizer). They can be purchased singly, or in tandem, with two bins welded together. The dimensions of a double bin are double that of a single, coming in 14, 16 and 18 ft. lengths.

Advantages of the system are:

- Truck box doesn't have to be lowered to be moved.
- Molded PVC 14-ft. telescoping spout is treated to resist corrosion from chemicals.
- Controls are mounted on bin sides for easy, safe operation.
- Hooks on bin sides for optional tarp coverings.
- Double bins are completely separate for keeping fertilizer and seed



Hydraulic augers load seed or fertilizer into planter boxes "as easy as turning on a water faucet," says manufacturer.

apart. Important, especially for cer-

- Hydraulic 9 hp motors give immediate augering action when full of seed or fertilizer. Unloads 450 to 600 lbs. of grain or fertilizer per minute.

- Clean-out doors at bottom of each tank facilitate complete clean-out which is particularly important to certified seed growers.

"During planting, time is of the essence. We figure this system will

allow farmers to seed 10 more acres a day with the time saved. And it's a great man saver, when you don't have to shovel tons of seed and fertilizer, as many farmers still do," according to Bucholtz.

For more information, contact: FARM SHOW Followup, D & B Fabricators, Inc., 5415 West Main, Box 608, Fargo, N.D. 58102 (ph 701 282-6685).

"TOTAL WEED MANAGEMENT"

New "Weedbar" for Bean Buggies

"It provides total weed control," says Ted Grau, of Grau Enterprises, Sioux Rapids, Iowa, of the company's latest new hydrostatic bean buggy. It's equipped with a Weed Bar which, combined with spot spraying, nails virtually all broadleaf weeds and volunteer corn in soybeans and other row crops.

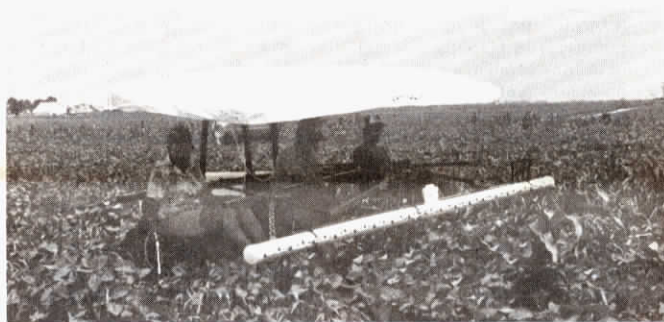
The Grau self-propelled Bean Buggy, first featured in FARM SHOW 2½ years ago, serves as the transport for the rope-wick Weed Bar for applying Roundup. The Weed Bar adjusts hydraulically from 6 to 60 in.

high and mounts front or rear. Several Bean Buggy models are available, carrying from one to five riders. If desired, the Weed Bar can also be mounted on your tractor's 3-pt. hitch.

"We see the Weed Bar as primarily an emergency unit for soybeans," Grau told FARM SHOW.

Cost for a single rider hydrostatic Bean Buggy equipped with the new Weed Bar is right at \$900.

For more information, contact: FARM SHOW Followup, Grau Enterprises, Sioux Rapids, Iowa 50585 (ph 712 283-2316).



Grau's Bean Buggy combines rope-wick weed bar for heavy infestations with hand sprayers for lighter weed infestations.

LOAD HITCHES UNDER RATHER THAN BEHIND THE TRACTOR

"Quadtractor" Pulls Eight Times Its Weight

Latest new development in utility tractors is the revolutionary Quadtractor which weighs only 500 lbs., yet pulls up to 8 times its own weight. It's possible because of the extra traction of the 4-wheel drive which, with its 4 identical vertical drives to the wheel is an adaptation of aircraft landing gear design.

Powered by an 8 hp. gasoline engine, the tractor has equalled or exceeded the performance of other small tractors with 2 to 5 times the hp., explains Barry Rossinoff, sales manager of Traction, Inc., North Troy, Vt., manufacturer.

Rossinoff explains that "you hitch the load under rather than behind the machine. The weight adds traction as the load gets bigger. It's the first

major development to help traction since the 3-pt. hitch of 40 years ago. It not only aids traction but is a quick connect-disconnect hitch."

It is versatile, being used as a riding mower, garden tractor, and intermediate tractor. Attachments now available or under development are a 36-in. rototiller, 68-inch rotary mower, utility blade, 6-ft. sidebar mower, 6-ft. snow thrower, cultivator, hay conditioner, auger, power generator, one-bottom plow, fertilizer spreader and planter.

Retail price of the Quadtractor is \$2,900.

For more information contact: FARM SHOW Followup, Traction Inc., P.O. Box 90, North Troy, Vt. 05859 (ph 802 988-4411).



Quadtractor has 31 in. clearance and turns on a dime. Features airplane landing gear-type vertical drive on wheels.