

COMBINES FAST ACTING AUGER WITH POWERFUL DRIVER

New Machine Drills, Drives Fence Posts

There are post drivers and post augers. Now comes the revolutionary Post-Sett that combines drilling and driving into one machine.

"So far as we know, it's the first and only post erector in the world that both drills and drives," Alastair Makenzie, Australian sheep ranger and inventor, told FARM SHOW. The first demonstration machine was brought to the U.S. earlier this year and plans for setting up dealers and distributors were being finalized as this issue of FARM SHOW went to press.

"With a conventional post driver, if the point on a pointed post is off center, it will drive crooked. The Post Sett, with its ability to first drill a pilot hole, eliminates this alignment problem. I almost always use the combination of drilling and driving when setting wooden fence posts with it," explains Makenzie. "I first drill a pilot hole, then use the driver to force an oversized post into the pilot hole. This combination of drilling and driving gives you solid, erect post settings in virtually all types of soil or weather conditions."

The auger, available with quick-attach bits ranging from 2½ to 12 in. in dia., drills holes to 4 ft. deep. The driver drives any size or shape post up to 15 in. in dia. (or 15 in. square) and up to 10 ft in length.

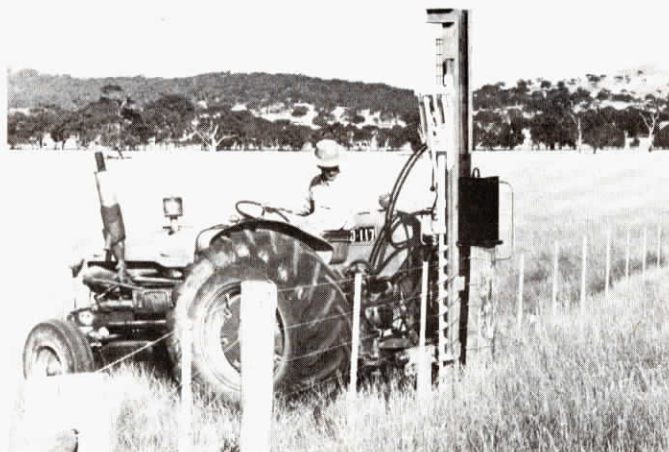
The Post Sett is available with an optional hydraulic leveling device for vertical alignment of the machine and posts on uneven ground. Or, it can be purchased with screw type jacks for manual leveling. The machine will drive or drill posts at any angle up to 15 degrees.

In addition to setting posts, the machine also works as a post puller. Even the biggest, most stubborn post can be pulled by first using the auger to drill holes around it to loosen up the soil, explains Makenzie. He notes that for extremely tough drilling situations, such as in rock or in concrete, the Post Sett can be equipped with a special drill. Hydraulics and weight of the 500 lb. driver hammer apply pressure against the special drill to make it "bite" into rock or concrete.

Another key feature is the machine's ability to work up close to buildings or in existing fence lines. "With posts 6 in. or less in dia., it will put them right up against the building, if desired. Larger sizes can be erected within an inch or two of a building. Average time to set posts 10 ft. long and 15 in. in dia. is right at 3 to 4 minutes, according to Makenzie. Speed of the drive hammer, and length of stroke, is adjustable for the type of post being set (steel or wood), for the soil conditions, etc. The machine fits any Cat. 1 or 2 3-pt hitch. Minimum hydraulics required is 3 gal. per minute at 2500 psi.

Retail cost hasn't been firmly established. As a ballpark figure, it's expected to be in the neighborhood of \$4,000 for the Post Sett machine itself, plus another \$600 or so for the optional hydraulic leveler device.

For more details, contact: FARM SHOW Followup, Post-Sett, c/o Australian Trade Commissioner, 360 Post St., Street, San Francisco, Cal. 94108 (ph. 415-362-6168).



New Post Sett offers drilling and driving in one machine. It will set posts in existing fence lines and can also be used to pull posts. Without moving tractor, operator can drill a pilot hole, then swing driver into position to drive an oversized post into pilot hole.

PULLS ITSELF ALONG AUTOMATICALLY

Concrete Vibrator for Do-It-Yourselfers

Latest new labor saver for leveling and finishing freshly-poured concrete is Custom Vibe, a vibrating device that lets one man do the job without scarcely lifting a finger.

Custom Vibe mounts on the leveling or screed board used to level fresh concrete. The operator simply attaches a quarter inch drill to the device, triggers the drill switch and then relaxes while the vibrator takes over to do the work. It walks or pulls itself along as it levels and smooths out the concrete, eliminating the hard work of having to seesaw a leveling board back and forth to work and level the freshly-poured concrete.

"With our new vibrating device, one man can level up to a 20 ft. span faster and easier than two men seesawing a screed board back and forth by hand," explains Dan Cronkhite, of Custom Trailers Mfg., Westville, Ill.

"The unit will do any concrete job that you normally would do by hand, only it eliminates the hard work of screeding and jitter-bugging. You save money by saving time and labor," explains Cronkhite. "It also eliminates having to hammer the forms to settle the concrete, and it brings finishing paste to the surface without hand troweling. You just bull float and wait for the concrete to set up."

Custom Vibe weighs only 9½ lbs. and easily attaches to any screed board in less than 3 min. Retail cost, complete with flexible drive and bracket for mounting, is \$149.95.

For more details, contact: FARM SHOW Followup, Custom Trailers Mfg., 233 South State Street, Westville, Ill. 61883 (ph. 217-267-2127).



Photo shows how one man can level spans up to 20 ft. using the new Custom Vibe vibrator, shown on left. The device "walks" in the direction of the pull, allowing one man to strike the concrete by simply guiding the board.



"Jitter bugging" and hand troweling to bring up paste is completely eliminated. Just bull float and wait for the concrete to set up.