

LETS YOU STAND UP STRAIGHT WHEN SPLITTING WOOD

“Super Spear” Log Splitter

You can stand up straight when splitting wood with the new “Super Spear” log splitter manufactured by Wikco Industries, Broken Bow, Neb. It operates like a steel fence post driver, with slide-hammer action driving the wedge point through the log.

The “Spear” is 42 in. long before

extending and weighs 15 lbs. The replaceable point is capable of splitting logs up to 14 in. in dia., according to the manufacturer. Suggested retail is \$29.95.

For more details, contact: FARM SHOW Followup, Wikco Industries, Box 9, Broken Bow, Neb. 68822.



When the ultra-sensitive sensor — the brain of the Cultimatic — touches the tree trunk, the cultivating arm draws back about 14 in. to clear the obstacle. Once cleared, the twin rotors return to their original position.

AUTOMATICALLY WORKS ITS WAY AROUND TREES, POSTS

New Way to Weed Trees

Latest new way to weed shelterbelts, orchards, fencerows and farmsteads is a “close up” cultivator that automatically works its way around individual trees, posts or other obstructions.

Called the Humus Cultimatic, it's manufactured in France where it has been extensively used for ten years and is now available in the U.S. It's designed for mechanical weeding and aeration of the soil right up to the base of plantings, eliminating the need for chemical weed control. Twin horizontal rotors, mounted on a sensor-operated retracting arm, pull weeds out by the roots, cultivating under tree branches, around and between trunks and young, fragile plants.

Three models are available. All three models have a working depth of ¾ in. to 7 in., 35 in. working width of the rotors, a working speed of 2.5 mph, and they operate off a 540 rpm pto. The KLT-60, smallest of the three models, is about 69 in. wide (with

rotors extended) and retails for \$4,875.

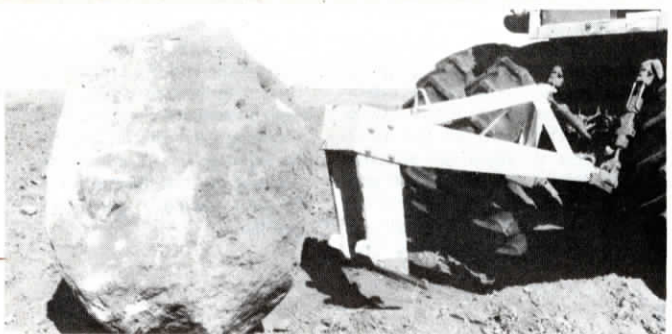
“With a weeding speed of 2.5 mph — and 35 in. working width — the one-man Cultimatic works about an acre per hour. More than 80 people would be needed to achieve such performance,” explains B. L. DeFazio, of Tradewinds, Inc., U.S. distributor. He notes that the machine aerates the soil without turning it over, and pulls weeds out by the roots to prevent regrowth. It may be used on a wide variety of soils, types and conditions, including rocks, stones, high weeds, branches, brush, steep slopes, muck or mud.

The ultra-sensitive sensor — the brain of the machine — enables the Cultimatic to work even among young, tender plants or small shrubs, such as currant bushes or raspberry canes.

For more details, contact: FARM SHOW Followup, Tradewinds, Inc., Box 1191, Tacoma, WA 98401 (ph. 206 272-4887).



Slide-hammer action drives wedge point through the log with a minimum of effort.



Note small prongs on the lower rear side of the shanks which make it easy to push large rocks out of their resting place after they have been loosened.

BUILT BY A FARMER FOR FARMERS

New “Digger” for Rocks or Stumps

“It's built by a farmer for farmers,” says Leslie Downer of his new rock and stump digger-puller.

Downer developed it primarily for loosening and surfacing solidly embedded rocks but says it also “works great” for ripping up compacted soil or pulling out tree stumps.

It's designed for use on tractors 90 hp or larger and equipped with a Cat. 11 3 pt. hitch. Downer equipped the replaceable high strength shanks with two digging points for easier

rock pulling without slipping past the rocks. Small prongs on the lower rear side of the shanks make it easy to push large rocks out of the way after they've been loosened.

The digger-puller itself weighs 810 lbs., is 61 in. long, 38 in. wide and has a maximum working depth of 27 in. Sells for \$795.

For more details, contact: FARM SHOW Followup, Leslie Downer, Roscoe, S. Dak. 57471 (ph 605 287-4484).