

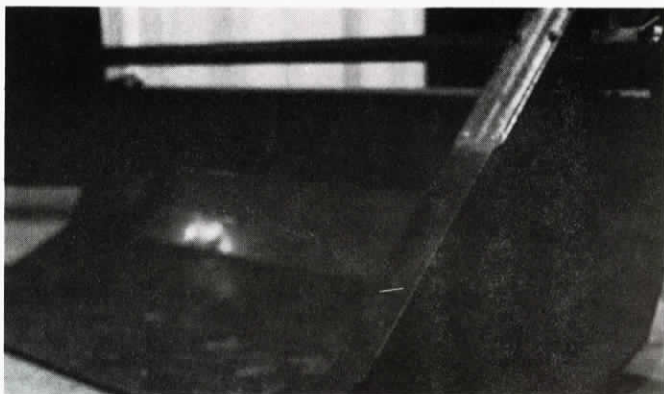
Slick Way to Scoop Snow or Silage

(Continued from cover page)

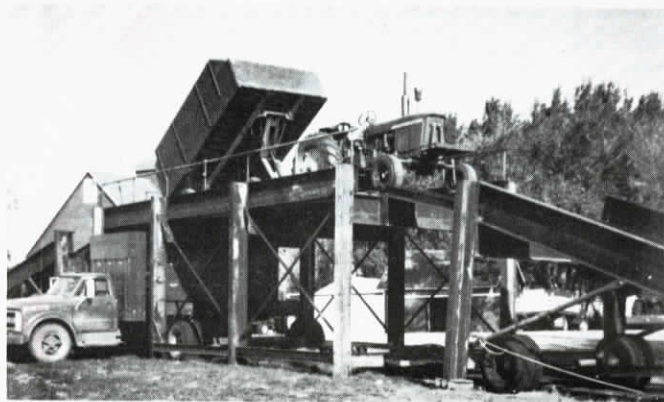
of front end loaders (also available in rear mounted models) and is available with optional brackets for either one or two tilt cylinders for operating the unit as a standard tilt bucket. The hydraulic motor which powers the chain driven ejector plate is mounted out of the way behind the bucket to permit use of the full width of the bucket.

Suggested retail for the standard size bucket (90 in. wide) is \$938, including the hydraulic motor. It's also available in 84 in and 102 in. models.

For more information, contact: FARM SHOW Followup, Dohrman Mfg., Emerson, Neb. 68733 (ph. 402-695-2422).



Chain-driven ejector plate moves across the bucket in about 3 seconds to unload snow, silage or other materials. Buckets can be equipped for side unloading without losing their original forward-tilt feature.



The "up" ramp is 58 ft. long, the "down" ramp 38 ft. Top center deck is 36 ft. long.



Note wheel to right of truck which is part of 3 pt. hookup for moving each section.

**FARM
SHOW**
For everyone in agriculture
interested in latest new products.

Vol. 2 No. 2, 1978

Editor-Publisher — Harold M. Johnson

Office Manager — Joan C. Johnson

Publication Office — FARM SHOW
8500 210th St. W.
Johnson Building
Lakeville, Minn. 55044
ph. 612 469-3303

FARM SHOW is published bi-monthly. It does not accept advertising and focuses exclusively on new products and services, and product evaluations. The subscription rate is \$8 per year. Canadian and foreign subscriptions are \$11 per year.

FARM SHOW does not charge for new products or services featured in the magazine. Anyone with a new product or service of interest to farmers — whether inventor, manufacturer, marketer, distributor or whatever — is invited to contact FARM SHOW regarding possible publication.

FARM SHOW attempts to verify product claims in editorial reports and adheres to rigid standards. However, the publisher assumes no responsibility for accuracy and validity of claims.
Printed in U.S.A. All rights reserved.

UNLOADS WAGONLOAD OF CORN IN LESS THAN 5 MINUTES

Build Yourself An Unloading Bridge

"It's a real time saver," says LeRoy Thurmer, Jackson, Minn., who teamed up with a brother and two nephews to build a huge portable unloading bridge to speed corn harvesting.

Tractors hauling corn from combines drive up on the bridge to unload wagons in a matter of minutes into a truck below. The huge bridge is built in three sections. Each section is equipped with a 3 pt. hitch at one end, and a truck axle and wheel at the other end, for easy transport from farm to farm.

"We're producing hybrid seed corn for Dekalb and built the bridge primarily to speed harvest and handling of ear corn," LeRoy told FARM SHOW. "We figure it cuts unloading time from 20 minutes per wagon to under 5 minutes. We team up to harvest with 14 wagons and 4 trucks. The time savings really adds up. What's more, we get a lot less shelling than we used to get using conventional elevators. The bridge also eliminates having to crawl up on the truck to level the load," he told FARM SHOW. Thurmer notes that al-

though the bridge is especially suited for harvesting ear corn, it can also be used for high speed handling of shelled corn, small grain, soybeans, fertilizer and other materials.

The bridge, built of salvaged steel beams, is 12 ft. wide. Tractor and wagon wheels roll in 20 in. wide, trough-shaped tracks measuring 6 in. deep and centered 72 in. apart. Flat iron pieces (1/4 high by 2 in. wide) are welded crossways on the tracks for traction. The floor of the tracks is built like a sidewalk grate so mud and snow can drop through without building up on the runway to impair traction.

The "up" ramp is 58 ft. long, and the down ramp 38 ft. long. The top deck is 36 ft. long with 11 ft. of clearance between it and ground level. Grain falls 8 ft. from the floor of the deck to the bottom of a truck box. Total weight of the 3 section bridge is right at 15 tons. Thurmer figures it cost right at \$8,000 to build using salvaged iron.

For more details, contact: FARM SHOW Followup, LeRoy Thurmer, Route 3, Jackson, Mn. 56143.