



Standard size Concept 21 house is 41 ft. in dia. and provides 1,320 sq. ft. of floor space.

COSTS LESS AND REQUIRES NO MAINTENANCE

Round Fiberglass House Has Many Advantages

Circular houses have intrigued people who were looking for a change from conventional home design, but the cost of building "in the round" has, until recently, been too high for any but the wealthy.

That's all changed with the arrival of the fiberglass round house that's factory pre-built and erected on your own building site. The house, with its 21st Century look, is produced by a Missouri-based manufacturer called Concept Twenty-One, Inc.

Besides its different appearance, the round fiberglass house has a number of other appeals.

1. No maintenance. Once the house is erected, it requires no painting and very little upkeep. The fiberglass shell resists most every kind of weather in every locality, says the manufacturer.

2. Fast construction. The pre-built molded fiberglass panels can be erected on your footing or foundation in one or two days, allowing all further construction to be completed, regardless of the weather.

3. Economical heating and cooling. Heating and cooling costs are "half to two-thirds" of those in conventional houses" because fiberglass has low heat conductivity.

4. Rodent and termite proof.

5. Wind and weather resistant. There are no shingles to blow off, or paint to be damaged by hail. Dome shape gives low wind resistance and wind noise. Snow slides off smooth surfaced roof.

Most important, the Concept 21 house reportedly is more economical to build than most conventional houses. Finished costs run from \$2 to \$5 per square foot lower than the standard "stick built" or manufactured houses. It complies with most government building codes and regulations, such as Federal Housing Authority and Building Officials and Code Administrators (BOCA).

The Concept 21 design has been

developed over the last 8 years at the company's headquarters in Hannibal, Mo., and is now being marketed in 12 states. It's offered in several sizes and can be built with or without basement; carports and garages can be added.

A standard size is 41 ft. in dia. which consists of 16 panels and gives 1,320 sq. ft. of floor space. The smallest model is 36 ft. in dia. with 1,017 sq. ft., and the largest has a 56-ft. dia. and 2,463 sq. ft.

The 41-ft. model has a price tag of about \$10,500. Concrete work, doors, windows, interior finish, and set-up charges have to be added to this cost of the basic walls, roof and center support structure.

Erection procedures are fast and efficient. You order the design and prepare the concrete slab or footings on your building site. The panels are made in the factory and delivered to the site within 3 to 12 weeks. You may order wood grain, stucco, smooth, or stipple finish on the wall panels. The roof has the texture of Spanish tile.

The inner walls have traditional wood studs spaced on 16 in. centers. This allows for insulating and finishing walls in a conventional way.

Most any floor plan, and heating and air conditioning systems, are adaptable to the house. The manufacturer says you can get 14% better utilization of space in a round house than in a rectangular one.

How are round fiberglass houses being accepted among farm families?

Concept Twenty-One vice president Mary Phelps says, "We have sold a lot of them on farms as well as in cities. In fact, we have found farm families more willing to accept this different housing concept than city people have been."

For more details, contact: FARM SHOW Followup, Fiberglass Concept 21, 400 S. 11th St., Hannibal, Mo. 63401 (ph. 314 221-4020).

CREATES SHOCK WAVE THAT BREAKS UP STOPPAGES

"Unpluggger" Opens Clogged Pipes, Wells

Latest new tool for unplugging clogged pipes, drains or wells is Drain Jet, a hand-operated gun that fires CO₂ cartridges.

"It'll handle most plugging problems with household plumbing and sewer systems," explains Jim Phillips, of Western Maintenance Products, San Francisco, Calif., the manufacturer. "What's more, it's easy and safe to operate. Your wife or teenage son or daughter can run it."

Here's how it works:

You load the Drain Jet with one to ten individual CO₂ cartridges, depending on how bad the plugging problem is and how big a pipe is involved. As the cartridges discharge, the compressed air they release is fired against a column of water. This charge creates a shock wave that breaks up practically any stoppage, the manufacturer points out.

"If it's a relatively small blockage, one cartridge delivering 40 lbs. of force might be sufficient to do the job. For tougher jobs, a full 400 lb. load (10 cartridges each delivering a 40 lb. force) may be needed," Phillips explains. The gun has been tested at forces up to 5,500 lbs. so the full 400 lb. load poses no danger to the operator," he points out.

The Drain Jet gun is said to be especially effective when a line is blocked on the far side of tight bends and it's hard to get through with snake-type cleaning devices. "The blast force travels so swiftly through the water that it bypasses stacks and vents before they can dissipate its impact, according to the manufacturer. "Ninety-eight percent of its energy

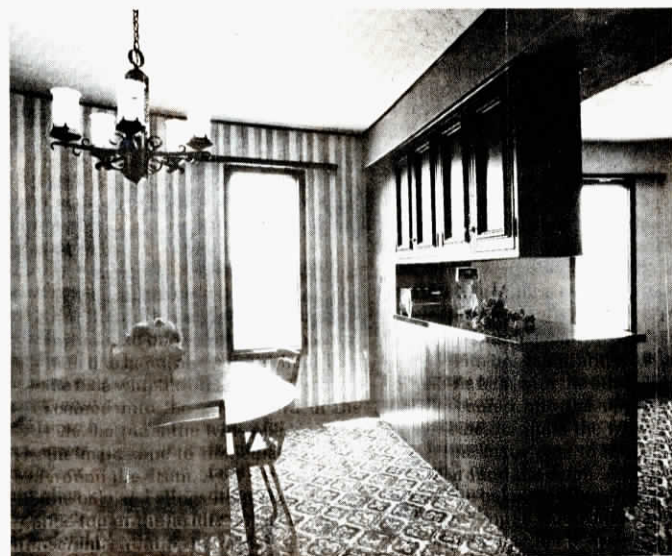


Drain Jet is loaded with up to 10 CO₂ cartridges, each of which delivers 40 lbs. of force.

hits the stoppage, while only 2% is spent against the pipe walls. There is no pressure build up in the plumbing system so pipes and joints are protected."

Suggested retail is \$39.95, plus \$2.50 per box of 10 CO₂ cartridges.

For more details, contact: FARM SHOW Followup, Western Maintenance Products, 325 Corey Way, San Francisco, Calif. 94124 (ph. 415-873-6596).



Round design lends itself to wide variety of floor plans and provides 14% better utilization of space, says manufacturer.