



## "Putt-Putt" Tractor A Popular Parade Attraction

You've never seen anything like the one-of-a-kind "Putt-Putt" tractor Frank King, rural Oklahoma City, Okla., built out of scrap he had lying around his farm shop.

"I built it as a show car for old steam and gasoline engine shows and it always draws its share of the crowd," says King. "I started with some scrap 4-in. channel iron I had around the shop and just kept adding parts. I stick anything on it I see around the shop that I think will attract people's attention."

That includes air horns, bull horns and, most recently, red strobe lights mounted atop the vehicle's cab.

A 3 hp. engine out of an old Deere grain auger supplies "Putt-Putt" with power. Converted to run on propane, the engine has a flywheel on each side, a real attention-getter.

Two German-built Ford transmissions provide the tractor with 18 gears. "They give me good power in low gear to pull a 16-ft. trailer around the place," King says. "I can go from a slow creep up to 20 mph."

Hydraulic brakes, backed up by a me-

chanical emergency brake, stop "Putt-Putt". It's fitted with four 13-in. wide tires. An old Datsun car radiator mounts in front to cool the vehicle.

About 5 1/2-ft. high at its highest point, "Putt-Putt's" cab is made out of sheet metal with windows out of an old camper. The door at the rear of the cab is a cut-down storm door.

There is a "huge number" of switches and gauges and even a 5-in. TV inside the cab. It's big enough to hold the driver, who steers from the right side, and one passenger.

The cab has air conditioning from an air conditioner out of an old Ford car and can be heated with an Arvin water heater for winter use.

The vehicle is just 4 ft. wide so King can haul it to shows in the back of his pickup. He's taken it to shows in six states since building it in 1982.

Contact: FARM SHOW Followup, Frank King, Rt. 10, Box 271, Oklahoma City, Okla. 73165-9810 (ph 405-794-5929.)



## "Recycle Tractor" Built Mostly Just For Looks

"I built it in 1991 partly to create the illusion of something as visually close as possible to the real thing without really working," says Ralph Jorgensen, Calgary, Alberta, about his "Recycle Tractor."

He uses hoppers on the tractor to hold newspapers, tin cans, glass and waste oil for recycling, and uses the main barrel on the tractor to burn trash. He also pulls it behind a garden tractor in parades.

The tractor is 4 ft. wide and 9 ft. long. Many of the parts, such as bull wheels, drive bearings, and worm gear from its platform, are from an old binder. Two pulleys are from an old wooden thresher.

Two bins mounted above each fender hold tin and glass. A bin mounted above the drawbar holds 3 cu. ft. of newspaper

and a 20 lb. propane tank, also above the drawbar, holds about 3 gal. of waste oil.

Household dry wastes are burned in what's made to look like the tractor's boiler, which opens from the front with a handle on the side.

"To create the illusion this is a working tractor when we pull it in parades, I have a compressor driven by the wheels," Jorgensen says. "The compressed air activates a whistle. A governor rotates as the wheels turn. The driver steers and clangs a bell along the route."

Contact: FARM SHOW Followup, Ralph Jorgensen, Box 7, Site 9, R.R. 6, Calgary, Alberta Canada, T2M 4L5 (ph 403-226-0429).



Tractor is patterned after a 4-WD Case-IH 4-WD 9270 tractor and made from sheet metal, miscellaneous iron and bicycle parts.

## Home-Built Pedal Tractor

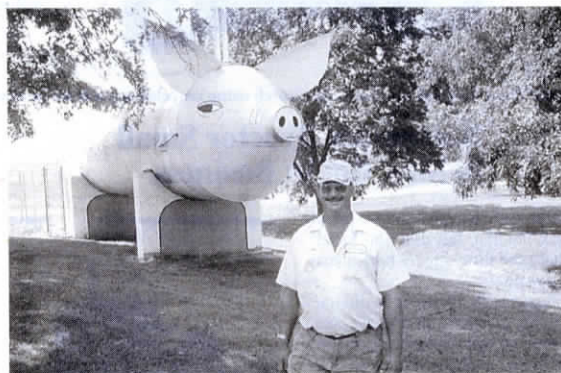
"My son loves riding this pedal tractor I fashioned after a 4-WD 9270 Case-IH tractor," says Ben Walker, Stewartville, Minn.

"It was made from sheet metal, miscellaneous iron and some bicycle parts I had lying around. The sheet metal was cut with a metal-cutting bandsaw and a 'sawzall'. I also had to make some dies to use in a press to bend the steel frame pieces. My kids

then helped assemble and paint and we put on decals and reflectors to dress it up."

The wheels, seat and steering wheel were purchased from Samuelson Pedal Tractor Parts, Box 460, Jewell, Iowa 50130.

Contact: FARM SHOW Followup, Ben Walker, 12037 Oak Ave. S.W., Stewartville, Minn. 55976.



Poirot mounted cone out of bottom of hog feeder and painted it white to match tank, then painted on eyes and mouth.

## LANDMARK MAKES IT EASY TO FIND FARM

# He Turned LP Tank Into A Giant Hog

His big LP tank always kind of reminded John Poirot of a giant hog so one day the Illinois farmer decided to do a little work on it. He ended up creating an eye-catching landmark that he says now makes it a lot easier to give directions to his farm.

To add a face to the end of the tank, he mounted a cone out of the bottom of a hog feeder and painted it white to match the

tank, painting on eyes and a mouth with black paint. He made a blunt-end nose out of a 5-gal. plastic bucket. Ears were created out of sheet metal and legs were painted onto the concrete support pillars.

Contact: FARM SHOW Followup, John Poirot, Nashville, Ill. 62263 (ph 618 493-6139).