

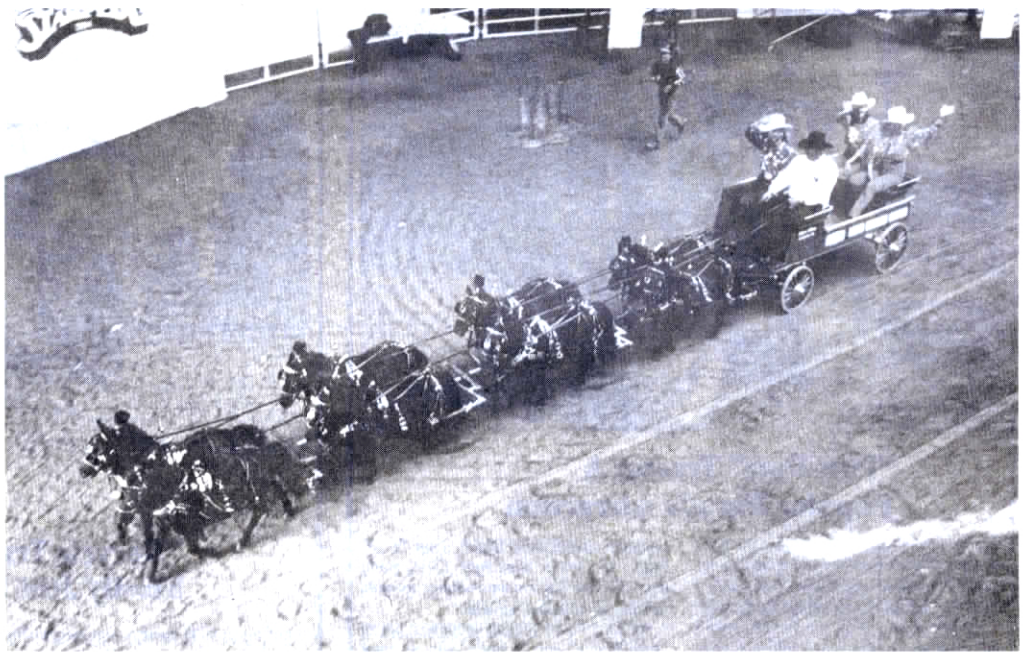
“Mini” Eight-Horse Hitch

“They draw a lot of attention in parades,” say Merv and Claudia Giles, Cochrane, Alberta, about their 8-horse hitch of Black Miniature Geldings.

The entire hitch is about 30 ft. long and weighs a total of about 3,200 lbs. The eight horses pull an 8-ft. long home-built wagon that weighs about 700 lbs. The Giles, who are sponsored by United Farmers Cooperative of Alberta, spend their summers traveling throughout Alberta appearing at fairs and parades and competing in contests. They won the American Miniature Horse Association Nationals in 1993.

“As far as I know it’s the only 8-horse hitch in Canada designed specifically for miniature horses,” says Merv. “The leather harness each horse wears is the same in every detail as the harnesses worn by large draft horses but weighs only 22 lbs.

“The Black Miniature Geldings we use are 32 to 34 in. tall and weigh about 270 lbs. each. For competition, Black Miniature Geldings can’t be over 34 in. high. There’s no weight restriction. It takes a while to put together eight matching black horses of this breed. They go back to the 1700’s when miniature horses were used

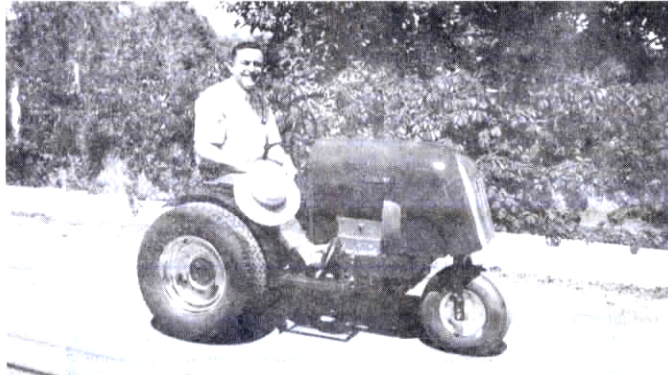


Giles’s 8-horse hitch of Black Miniature Geldings drew a lot of attention at the Calgary Exhibition and Stampede last year.

in coal mines and also by royalty. They have an easy going disposition compared

to Shetland ponies and are easy to train.” Contact: FARM SHOW Followup, Merv

Giles, Rt. 2, Cochrane, Alberta, Canada T0L 0W0 (ph 403 932-3535).



Wilcox built three-wheeled tractor from scratch using recycled parts from junk yards.

Homemade Tractor Small In Size, Big In Business

A few features of “Buzz” Wilcox’s tractor might look familiar, but don’t be fooled. Wilcox built the little three-wheeled tractor from scratch.

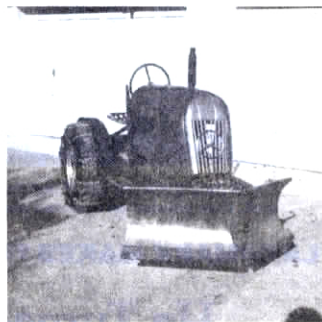
“I’ve always been interested in old tractors, but living in town, I didn’t have room for a full-size antique tractor and I couldn’t find a small one,” explains Wilcox, of Colorado Springs, Colo. “When my wife suggested I build a small one of my own, I did. I used all ‘recycled’ parts from junk yards and made it to look like a late 1930’s tractor.”

The tractor’s wheelbase is 43 in. It’s 6 ft. long, about 40 in. high and weighs just over 1,000 lbs. “That’s with me on it,” Wilcox notes.

A Milwaukee 2-cyl. 18 hp. engine off an old hay baler supplies power. Wilcox made his own exhaust system by bolting 1 1/4-in. dia. pipe to the engine’s manifolds and then welding 2 in. dia. pipe to the outside of the smaller pipe.

The 4-speed synchronized transmission is out of an early 1970s Ford Pinto. Wilcox modified the transmission so its gear ratio is 120:1 in low gear for heavy pulls.

Heavy-duty rear differentials, complete with mechanical foot brake and emergency hand brake, came from a “Georgia power buggy” used in construction to haul wet cement. Rear fenders are wheel wells out

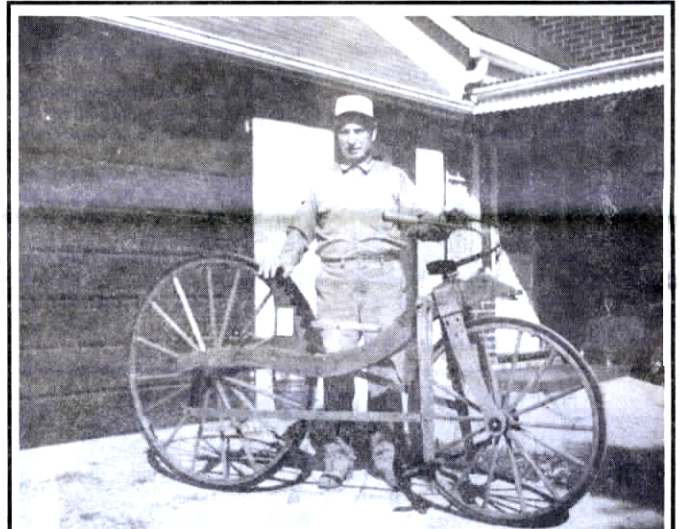


Tractor’s 52-in. wide steel blade is hinged in the middle for pushing snow.

of an old International Scout cut to size. Rear 15-in. wide tires mount on Ford chrome wheel hubs, as does the tractor’s front 8-in. dia. tire.

Mounted in a U-bracket, the front wheel turns with a steering gear out of an early 1970’s model Ford Mustang with a steering wheel made from a wheel from an old safe. The single front wheel permits nearly 90 degree turns, good for snowplowing in tight places or for maneuvering through obstacle courses in competition, according to Wilcox.

Wilcox sits on an old perforated metal



Model Of First-Ever Wooden Bicycle

“I made this wooden bicycle in 1993 from a plan I received from the curator of a museum in Dumfries, Scotland where they have documented the fact that this bicycle was first built in Scotland in 1845 by a man named Fitzpatrick McMillan. It was the first bicycle ever built with pedals,” says Ben Madill, Mississauga, Ontario.

“I made the wheels out of hickory and

the frame out of ash. Everyone asks if I can ride the bike. The answer is yes.”

Pedals are pumped up and down, activating offset cranks that turn the rear wheel.

Contact: FARM SHOW Followup, Ben Madill, RR 6, Hurontario, Mississauga, Ontario L5M 2B5 Canada.

Deere implement seat fitted with a spring from an old scissors jack with a clutch spring under each side.

The tractor’s hood, rounded on top like an old Oliver, is made out of an old school bus hood, as is its grille. A hood ornament off an old Mercedes-Benz truck hangs in the middle of the grille.

Wilcox made a 52-in. wide steel blade that’s hinged in the middle for pushing snow. Rubber-tipped for extra durability and better cleaning, the blade can be used in a V-shape, straight, or slanted to the left or right. The blade mounts on the front of the tractor on two arms made out of an old truck parking brake running from the rear

of the tractor to the front.

The little tractor has lots of power. Wilcox won third place in a Colorado Springs-area tractor pull in 1993, the year he built it. Last summer he won second place in a tractor obstacle course competition, where contestants pulled a 16-ft. long wagon through 64 pylons, then backed the wagon into a stall.

Contact: FARM SHOW Followup, Roland “Buzz” Wilcox, 2315 Sage St., Colorado Springs, Colo. 80907 (ph 719-633-6209).