

SHOCKS ONLY WHEN FENCE IS TOUCHED

Fence Controller First of Its Kind

They're calling it "The fence controller with a brain" — the first and only one of its kind on the market.

Unlike ordinary fence controllers which keep the line charged continuously, the new Sens-O-Matic, developed and manufactured by The Tomann-Wagg Co., Albert City, Iowa, is completely at rest until an animal touches it. The "brain" immediately responds by sending out a shock and continues shocking until the animal is off the fence.

"Because it's completely at rest most of the time, there is scarcely any wear or tear on the unit and operating costs are reduced considerably," says Jim Weems of the Weems Group, Cedar Rapids, Iowa, national marketer of the Sens-O-Matic. "Animals, being creatures of habit, soon learn to respect the electric fence and, before you know it, you'll be operating at up to 100% saving compared to ordinary fence systems."

Scattered weeds growing up to touch the fence don't bother the Sens-O-Matic, says Weems. "They don't offer enough resistance to trigger the unit's brain. When an animal touches the fence, it shocks right through the weeds. Because the unit doesn't activate to 'chop' weeds as

they grow tall enough to touch the fence, it poses less danger of fire than conventional systems."

A switch on the Sens-O-Matic allows it to be operated automatically (no shock until the fence is touched) or manually like a conventional charger (one shock every second).

Suggested retail is \$64.95. Currently available in a 100V. electric model. A battery model will be introduced late this year or early next.

For more details, contact: FARM SHOW Followup, the Weems Group, 411 First Ave. S.E., First Ave. Bldg., Suite 201, Cedar Rapids, Iowa 52401 (ph. 319 365-5244).



Sens-O-Matic controller senses when an animal touches the fence and only then sends out a "charge".

WON'T ROT OR RUST AND NEVER NEED PAINTING

Plastic Posts Last Forever

Everlasting fence posts that never rot or rust and never need painting are new from Lone Star Plastic Fence Posts, Louisville, Ky.

They're round (2½ in. in dia.) and come in standard 6½ ft. lengths. The ends are pointed so you can drive them with a hand driver, or with a hydraulic post driver, says Paul Stogner, national sales manager.

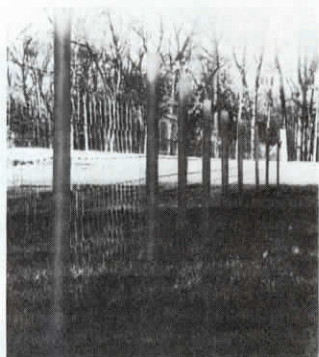
He points out that the posts are stable in extreme cold or hot temperatures. No anchor plate is required for stability.

"We feel they're definitely superior to wood or steel posts," says Stogner. "What's more, they're environmentally safe to livestock, a point of increasing concern in light of recent reports of problems with pent-treated wood posts."

The black plastic round posts can be sawed, if needed, like wood. They reportedly hold staples driven into them better than wood and, because they're made of non-conductive plastic, no insulators are needed for electric fence. They're also chemically fire retardant and will resist brush fires, according to the manufacturer.

Suggested retail is \$2.75 per 6½ ft. post.

For the name of your nearest dealer and other details, contact: FARM SHOW Followup, Lone Star Plastic Fence Posts, 4026 Produce Road, Louisville, Ky. 40218 (ph 502 968-6261).



Lone Star black plastic fence posts hold staples better than woodposts and are more attractive, says the manufacturer.



Fighting fires is one of many uses for the battery-driven Aqua-Duk pumping-spraying system.

USE IT FOR SPRAYING CROPS OR LIVESTOCK, FIGHTING FIRES, OR WASHING BUILDINGS

"Go Anywhere" Pump is Battery Operated

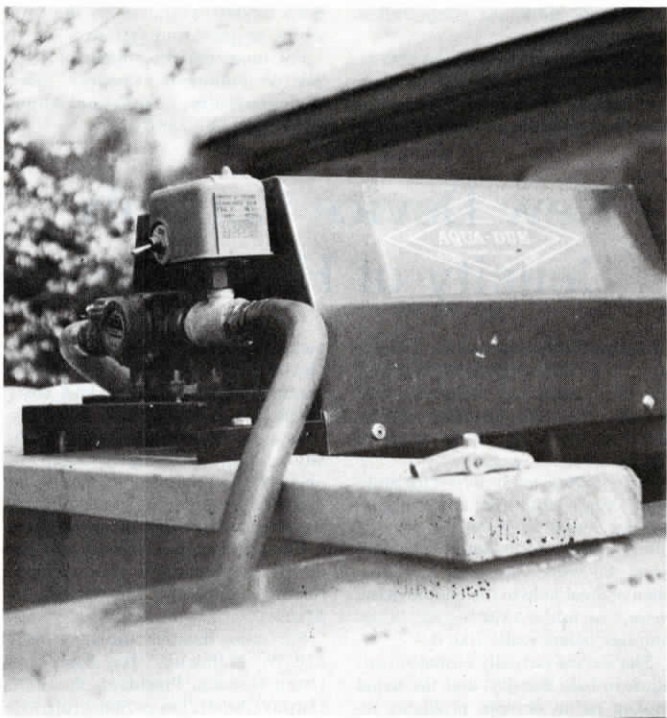
Many spraying or pumping jobs can be handled with the new Aqua-Duk, an automatic battery-operated pumping system that goes anywhere a pickup can go.

Aqua-Duk's capacity is up to 200 lbs. psi pressure and up to 20 gal. per min. It runs off the battery of the vehicle and is available in 12, 24 or 36 volt models. All that's required to run the unit is a good battery, a No. 4 welding type cable and a ground wire of the same size, says Paul Wilson, inventor and marketer. He points out that water, liquid fertilizer, her-

bicides, insecticides, wettable powders under suspension, or fungicides can be pumped with the system. It also handles fuels and can be used for cleaning and washing down buildings, animal pens and machinery.

The unit weighs only 60 lbs. and is easily loaded in or out of a pickup or other vehicle. Handles up to 475 "head feet" and retails for \$495.

For more details, contact: FARM SHOW Followup, The Automatic Aqua-Duk Corp., Box 6442, 4801 S. 29th St., Fort Smith, Ark. 72906.



Pump delivers up to 20 gal. per min.; and up to 200 lbs. psi.