

Francis Alexander shows off a "custom" stone his company engraved.

PERSONALIZED STONES DEPICT BEST LOVED MEMORIES

Put Your Farm On Your Gravestone?

With a little planning and the right memorial company, you can have a line-drawing replica of your farm or ranch engraved on your or the family's gravestone.

"Working from a good photograph, we first make a drawing and then cut a rubber stencil," explains Francis Alexander of Wittenbeck Memorial Co., Inc., Ankeny, Iowa. "That stencil, placed over the granite stone, outlines the design when the stone is sandblasted. We can get quite detailed."

Alexander notes that while the Wittenbeck Co. has specialized in putting farm scenes on gravestones, most any gravestone company

should be able to perform the service. Many stones, he notes, normally carry some type of design.

"It doesn't occur to most people to use a line-drawing replica of their own farm or ranch. That's too bad because it gives so much pleasure," Alexander points out.

Putting your farm or ranch on your gravestone costs about \$100 extra at Wittenbeck. You can request other designs, too, such as fields, mountains, or hunting scenes.

For more information, contact your local memorial company. In Iowa, contact: FARM SHOW Followup, Wittenbeck Memorial Co., Inc., 7242 N.E. 14th St., Ankeny, Iowa 50021.

ONE-MAN SUBMARINE

New "Toy" For Family Fun

If your family's already into boating, you'll be interested in the new one-man submarine. This new "toy" for kids of all ages lets you explore water like you never thought possible — and for a lot less money than you probably would expect to pay for a submarine.

Price tag on the new Thomas Taylor submarine is \$2,995. It dives to 300 ft., running at speeds up to 5 mph on a 24-volt electric motor powered by two 12-volt batteries. Range between chargings for the 125-lb., 7-ft., 8-in. sub is about 20 miles. It can turn 360° in its own length and move in reverse. You can dive, surface or hover at one level just by manipulating the water ballast.

"The operator's head remains in

air, while he sits in water taken in for ballast. Two air tanks keep the operator supplied with oxygen to breathe. If you decide to climb out and explore with scuba equipment, you just fill up with water, open the hatch and get out. You can carry several hundred pounds of equipment with you (or pick that much up)," explains Taylor.

Dealers have been established for the new machine, which features all easily removable and serviced parts. Dealers supply an 8-hour training course for new buyers.

For more information, contact: FARM SHOW Followup, Thomas M. Taylor, The Yellow Submarine Co., 4002 Hanson St., Ft. Myers, Fla., 33901 (ph 813 334-4040).

TAKES JUST 20 SECONDS TO CUT THROUGH A 2 FT. DIA. STUMP

PTO-Powered Saw Cuts Out Stumps

"The going rate in this area for clearing land of stumps with a bulldozer is \$300 an acre. With this machine, we can do it in a fraction of the time for less money, and with less mess to clean up later," says Dale Smith, one of two Illinois inventors who manufacture and sell the new Jeffco Stump Saw.

Smith and Cyril Barton built the saw to clear stumps from land that logging companies have cut over. The saw cuts the stumps off about 8 in. below the ground. Smith says it will cut through a 2 ft. dia. stump in about 20 seconds. It is capable of cutting a stump up to 9 ft. in dia. by cutting from several angles.

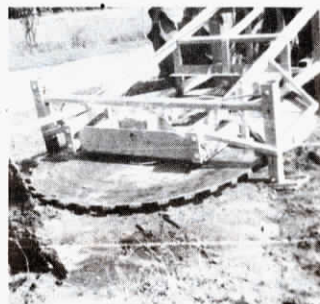
An 80 hp tractor will power the saw, but Smith says a tractor up to 120 hp may be needed to raise and support the 2,500 lb. saw. It is 3-pt. mounted and pto-driven.

The 540 rpm pto runs into a 2:1 reduction gear box. The blade slides backward or forward hydraulically (up to 3 ft.) from the tractor when cutting a stump.

The 6-ft. dia., 600 lb. blade runs at 300 revolutions per minute and is equipped with 32 carbide-tipped, 3/8 in. thick teeth. The teeth are built for Levco stump-grinding machines in Wynne, Ark.

Dirt and small rocks don't bother the teeth very much. When they finally do become dull or chipped, they can be unbolted and replaced. "We cut about 8 acres of stumps in a few hours recently and never replaced a tooth," Smith told FARM SHOW. "It just does a remarkable job."

Steel pads like those used to stabilize a backhoe are used to support the machine in operation. They



Dirt and small rocks don't bother the Jeffco Stump Saw.

are hydraulically adjusted. The pads maintain up to a 45° angle so that the saw starts cutting at ground level and ends up about 6 in. underground at the end of its 3 ft. stroke.

The pieces of stump are removed with a loader or bulldozer and discarded. Smith and Barton just disk the land and plant it to soybeans with no other special seedbed preparation. The inventors haven't tried to plow or chisel any reclaimed land, but they think the remaining stump wood below 8 in. should be rotten enough to allow those deep operations in just a few years.

"Our machine will probably pay for itself on just 25 acres of cut-over timber," notes Barton. He and his partner are selling the machine for \$8,000 FOB. They're manufacturing the Stump Saw themselves now, but would like to find someone who is interested in building the saw for them.

For more details, contact: FARM SHOW Followup, Jeffco Stump Saw, Inc., Box 169, Mt. Vernon, Ill. 62864 (ph 618 242-1370).



Thomas Taylor's battery-powered submarine dives to 300 ft., running at speeds up to 5 mph.