



Conversion Hitch lets you switch from gooseneck to straight hitch in minutes.

### COMBINES GOOSENECK AND STRAIGHT HITCH

## New 2-in-1 Hitch Fits Any Trailer

"Lets one trailer do the work of two," says Wendell Corbett, designer of a new conversion hitch that lets you switch from straight trailer hitch to gooseneck in minutes.

"You can use it for work around the farm with a pin or ball hitch and then switch to the gooseneck configuration for over-the-road travel. Until now, you needed two different trailers," explains Corbett.

The new hitching system can be mounted on most existing trailers by cutting away the old hitch (whether gooseneck or straight) and attaching the conversion hitch's 1/2 in. steel base plate. Corbett's two hitches then fit right onto the base plate, fastening

into towing position with just four bolts.

"The base plate bolts or welds to the front of the trailer frame. In some cases, part of the trailer will have to be cut away to get to the frame," explains Corbett, who also manufactures a residue saver for combines.

The new hitch comes in kit form with everything needed for installation. Three different sizes are available. Cost for the 20-ft. trailer model is right at \$1,195.

For more information, contact: FARM SHOW Followup, Feed Residue Saver, P.O. Box 711, Wattertown, S. Dak. 57201 (ph 605 886-5200).

### FITS MOST DISKS, CULTIVATORS

## Dolly "Carrier" For Spray Tanks

New from Portable Elevator, Bloomington, Ill., is a first-of-its-kind dolly spray tank carrier that readily adapts to most disks, field cultivators and chisel plows.

Designed to carry a 500 gal. tank, it distributes weight of the loaded tank so that about 30% of the weight is on the tongue, 70% on the dolly's wheels, and virtually no weight at all on the implement itself, according to W.A. "Bill" Wickett, manager of tillage education.

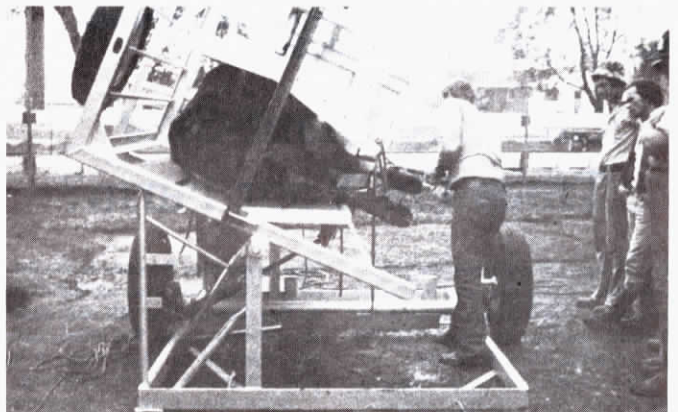
He notes that the dolly and tank can be equipped with a spray boom and used independently as a trailer-type sprayer.

Wheels on the dolly are adjustable both for height and width so as to readily adapt to various makes of disks, cultivators and chisel plows.

Sells for right at \$1,000.

For more details, contact: FARM

SHOW Followup, Portable Elevator, Box 2847, Bloomington, Ill. 61701 (ph 309 829-1235).



Wooden squeeze chute handles any size animal, from heaviest bull down to 500 lb. calves.

### CHUTE HOLDS ANIMALS WITHOUT STRAPS

## "Beltless" Hoof Trimming Chute

"It's the only tipping table we know of that uses no belts or straps. Tapered wooden sides cradle animals in a natural body contour. One man can safely handle even problem cattle," says Elwood Sawby, Airdrie, Alberta, about the new Skyland trimming chute from Skyland Manufacturing Equipment.

The all-hydraulic chute is a self-contained, over-the-road unit, complete with motor, hydraulic pump and spare tire. The restraining system consists simply of tapered, wooden sides.

The chute's designed for most any size animal, from the heaviest bulls down to 500 or 600 lb. calves. Hand operated levers adjust chute to control position of the animal you're working. The front headgate swings open and has two locks for safety.

One double-acting cylinder is used to tilt the crate. The same cylinder is unpinned and shifted to a different position to place the chute in and out of transport position. The two-wheel chute is designed for normal highway speeds. Electric motor hydraulic pump and controls are mounted right on the chute frame. It can also be

pto-driven, or run off tractor hydraulics.

"The chute is designed so animals cannot lay down and refuse to come out of the chute. You don't waste time with stubborn animals," explains Sawby. "Farmers who've been testing the machine have found it to be extremely safe regardless of the animal. One man working alone can trim a herd of cattle, or handle bulls weighing 3,000 lbs. or more. The chute does not lay the animal in an unnatural horizontal position flat on the animal's side. Tilt tables that tip the animal flat for an extended period of time can promote bloat and even cause rumen contents to escape and be inhaled by the lungs," says Sawby.

Cost for the Skyland chute complete with spare tire, motor, cylinder, hydraulic pump and controls is \$4,000 fob (Canadian dollars). A stationary unit without transport or hydraulics sells for \$3,000.

For more information, contact: FARM SHOW Followup, Skyland Manufacturing Equipment, Ltd., Box 839, Airdrie, Alberta, Canada, TOM OBO (ph 403 948-7810).

