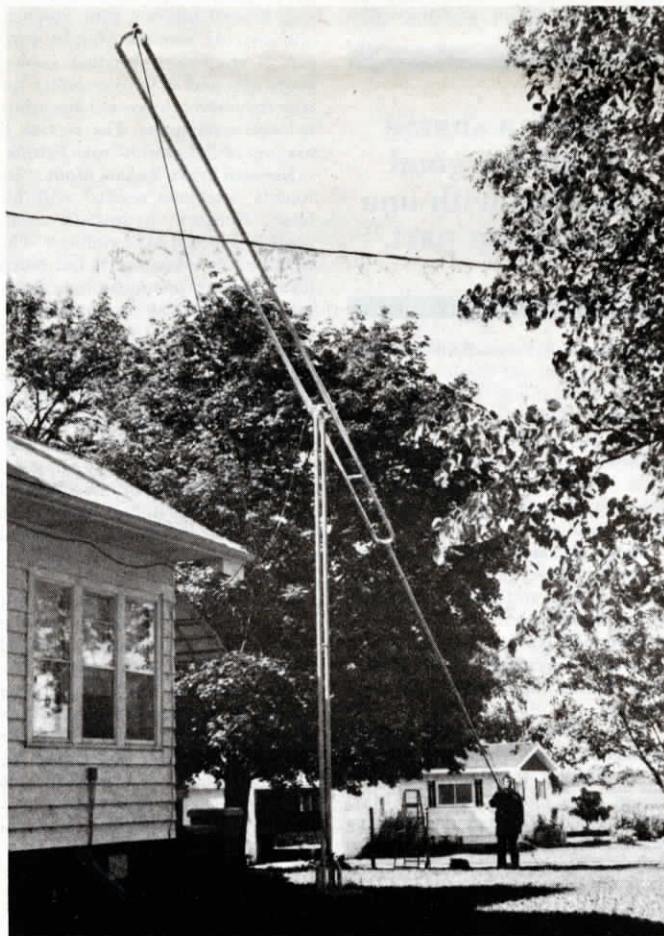




Metron Marker loaded with special ink will write on plants, fabric, bees, plastic or rusty or grease-covered metal. Also available with invisible ink which requires black light to read.



Self-standing tower is hinged and counter-balanced for easy, one-man operation. It requires no guy wires and lets you install, service or adjust antennas or other fixtures at the very top without having to climb a single step. Top swings down to ground level.

WRITE ON ANYTHING, INCLUDING PLANTS

Many Uses for New Markers

For less than \$3, you can buy a new-style marking pen that writes with invisible ink for putting "hidden" codes on pesticide containers and other property. Or, you can buy the same type of marker filled with a new waterproof fluorescent ink that leaves a highly visible mark on virtually any surface, including plants, plastic materials, oil or grease covered parts, or on rusty machinery and equipment.

For making invisible or "hidden" marks, Metron Optics, Solana Beach, Calif., fills its new Metron Marker pen with Transflor, a new transparent ink that's visible only when exposed to a black (ultraviolet) light. It leaves a clear, colorless mark that's virtually undetectable in sunlight or normal electric lights.

Possible uses for the invisible marker include marking metal or plastic pesticide containers, or feed or seed corn sacks for positive identification in case they're stolen and recovered. In industry, the "invisible" ink marker has been used to inconspicuously mark warranty dates on equipment, or for discrete marking, such as on rejected parts returned to a vendor suspected of returning the same parts at a later date.

FARM SHOW tested this marker,

putting several dots of the invisible ink on the top of a metal container. The dots were invisible to the naked eye but showed up readily under a "black light" purchased in a local store for only \$1.

Metron Optics also offers Metron Markers loaded with a permanent marking ink which writes in your choice of 10 different fluorescent colors. The special ink is water proof and flexible when dry, and will write on oil or grease-covered metal, on plants, fabric and most any other material. The fluorescent ink leaves a permanent mark which, unlike the "invisible" Transflor ink, doesn't require a special "black light" to be read. Researchers use it to code plants and even to mark bees for study purposes. By marking the queen bee, for example, she becomes readily visible and the marking doesn't bother or abuse her in any way.

Cost of the Metron Marker pens, loaded with either transflor ink or permanent fluorescent ink, is \$2.95 each.

For more details, contact: FARM SHOW Followup, Metron Optics, Paul Kempf, President, Box 690, Solana Beach, Ca. 97075 (ph. 714 755-4477).

TOP SWINGS DOWN TO GROUND LEVEL

Counter-Balanced Tower Eliminates Climbing

"It's the first and only patented counter-balanced hinged tower in the U.S.," says Michael Bauer, inventor and manufacturer of the new-style tower that lets you install or service TV, CB, or AM-FM antennas right from the ground. You simply tilt the counter-balanced tower — available in 40 or 50 ft. models — so the very top end swings down to ground level. When you've made the installation, adjustment or repair, you swing the tower back to the vertical position. Because it's counter-balanced, it swings effortlessly.

The hinged tower can also be used

as a flag pole, for bird houses, as a light pole or for other uses.

To install, you pour approximately 1¼ yards of concrete footing around the base of the pole. It's made of welded steel pipe construction and is shipped in 3 pieces. Shipping weight of the 40 ft. tower is 350 lbs. (21 ft. shipping length). The 50 ft. tower weighs 400 lbs. and has a shipping length of 31 ft.

For more details, contact: FARM SHOW Followup, Bauer, Mfg., Rt. 2, Box 23, Mapleton, Minn. 56065 (ph. 507 462-3599).