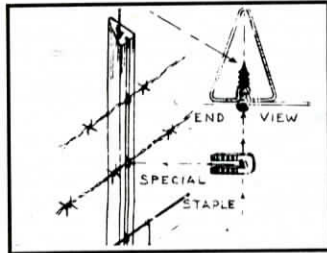




shoe and fitted it into our special shoe behind the toe, welding it in place. Once installed, the gelding traveled perfectly with complete protection from harm. We put him right back to work chasing cows and riding range. (Heather Thomas, Box 215, Salmon, Idaho 83467)

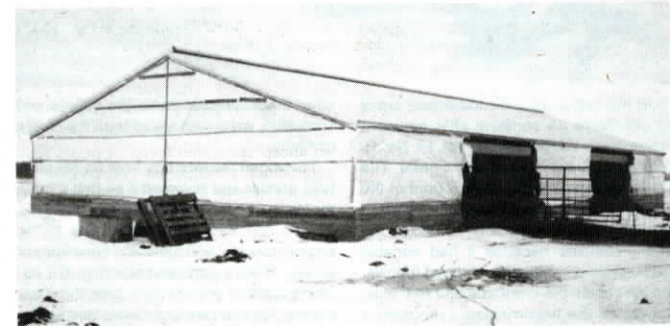
My patented new "Try Angle" fenceposts reduce the cost of fence building. They're made by an automatic cold rolling mill process that really keeps the cost down and they're much more convenient to use. You can drive special serated staples into them, or screw into them when attaching wood crossbars. They hold wire securely, eliminating the need for an anchor post to maintain tension. They can be made out of 16-ga. steel for economy or 12 ga. for highway sign use or security fencing. We've lined up several big distributors and hope to have them on the market soon. (Ken Vernon, Vernon Valley Farm, 5639 Meadow Lane, Mariposa, Calif. 95338 ph 209 966-4412)



ess that really keeps the cost down and they're much more convenient to use. You can drive special serated staples into them, or screw into them when attaching wood crossbars. They hold wire securely, eliminating the need for an anchor post to maintain tension. They can be made out of 16-ga. steel for economy or 12 ga. for highway sign use or security fencing. We've lined up several big distributors and hope to have them on the market soon. (Ken Vernon, Vernon Valley Farm, 5639 Meadow Lane, Mariposa, Calif. 95338 ph 209 966-4412)



We spent three years developing this lock for gooseneck hitches since there was nothing on the market like it. Lets you put a lock over the hitch on gooseneck trailers when they're not in use so no one else can hook up to them. The "Sure-Lock" fits 2 5/16-in. gooseneck couplers of the type that have flanges on either side, which are used on most gooseneck trailers. The lock consists of two pieces that slide together over the coupler flange. Once the lock is in place, you press the button on the plunger lock. To take the lock off, you open it with a key and simply slide it apart. Sells for \$89.95. (Louise K. Wheeler, We-Lock Industries, Inc., 1625 N. West Bypass, Springfield, Mo. 65803 ph 417 831-9281 or 864-3688)



We made "siding" for our 40 by 80-ft. loafing barn out of 3 used plastic silage bags which had previously been filled with silage. The 150-ft. long bags were 8 ft. in dia. We nailed

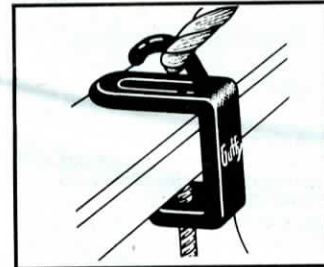
This telescoping flagpole makes it easy to display the flag over my house. It consists of a 17-ft. base made out of PVC pipe and a 14-ft. flag staff, made out of smaller dia. PVC that my 48-in. flag attaches to. The staff slides up and down inside the base. Four plastic bushings support the smaller pipe



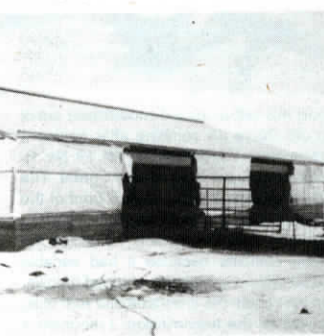
inside the larger pipe. A small pulley and 30 ft. of nylon rope raise and lower the staff. I pull on one rope to display the flag and the other rope to lower it down into the base for storage. The only drawback is that because of the design you can't fly the flag at half mast. It works so good I'll put together plans if anyone's interested. (H. Francis Meiller, 480 Meadowlark Dr., Minneapolis, Kan. 67467-3013)



The Frustrated Farmer is a tractor puzzle game we developed that features four different tractors in bright colors. Each tractor represents a different era in farming. We developed this game as a family project. It consists of nine tile pieces that you mix up and then try to reassemble in the correct order so that all the tractors are completely reconstructed with the correct parts. It's a lot harder than it looks. Some farmers can do it in a half hour while it takes others hours. A booklet is included with the game on the heritage of farm tractors. Sells for \$8.95 (plus \$3.05 for shipping). (Jim Schurz, J & P Design, P.O. Box 28135, Crystal, Minn. 55428)

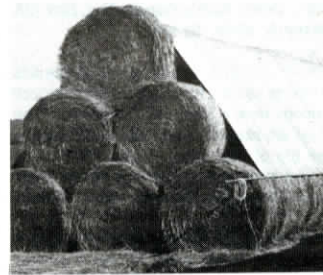


These new padded tie-downs attach easily to any pickup box. The L-shaped steel brackets are equipped with a hook on top and a threaded key on bottom. You tighten the key against the underside of the side rail.



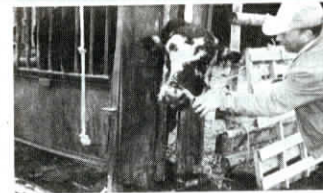
the plastic in place with boards, doubling it up on the ends. There was no siding on the building previously. (Kevin Willcome, B1130 Century Rd., Spencer, Wis. 54479)

The bracket is padded with rubber to prevent paint damage and you can quickly move them, depending on the load, unlike other tie-downs which bolt to the pickup. A set of four with adhesive rubber gaskets sells for \$25. A set of vinyl-covered brackets sells for \$35. (Gordon Young, ER2, Inc., 17845 South Edgewood St., Oregon City, Ore. 97045 ph 503 631-2876)



We'd like to let your readers know that we have taken over sales of the Super Bale Tarps featured in your Vol. 15, No. 6 issue. Our tarp tie-down system makes our tarps better than any other bale tarp on the market. Instead of individual grommets, the tarps have sleeves along each side through which you thread lengths of metal pipe. Tie-down ropes wrap around the pipe, making the system much more effective in securing against wind. A 25 by 36-ft. tarp covers 54 5 by 4-ft. bales stacked in a pyramid and sells for \$269 (U.S.). Others sizes available. (Leonard Calhoun, Calhoun Agri-Services, Box 453, Chester, Ontario N0G1C0 Canada; in U.S., contact: Double M Farms, Rt. 2, Box 52, Millersburg, Penn. 17061 ph 717 692-2171)

On our ranch we have a lot of porcupines that come down into the creek bottoms to eat bark off the trees and willows, and every winter and spring we have a few calves,



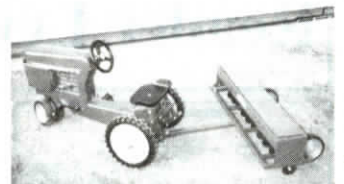
heifers or young bulls that get a noseful of quills. We've discovered that the best way to remove the quills is to restrain the victim, preferably in a squeeze chute that holds the head firmly, and pull out the quills with a needle-nose pliers. The quills come out fine if you can get a good grip on them with the pliers and give a quick, straight pull. If you pull off to the side, they'll break off and be more difficult to get hold of.

Once you have all of the visible ones, feel the skin with your fingers to see if there are any broken-off ones you might have missed. Also, feel inside the animal's mouth and lips to see if there are any inside the mouth. (Heather Smith Thomas, Box 215, Salmon, Idaho 83467)



Here's a quick repair for hitch pins that have lost their handles on top. Just drill out the top hole and install a small clevis in place of the handle. A clevis is bigger and easier to handle. Will also last longer. (R.L. Kent Hodgson, Rt. 1, Hudson, Quebec, Canada)

We make a total of 17 farm implements designed to be pulled behind pedal tractors. I'm sending along a photo of our latest implement - a 1/5-scale no-till grain drill that's 3 ft. wide with black plastic disc open-



ers and an easy-to-open lid on the grain hopper. The drill can be pulled by itself or behind our cultivator. The drill is serial numbered and dated and is available in green, red, blue or yellow. We will also do custom colors on request. Sells for \$109. Other implements include manure spreaders, tillage equipment, planters, auger wagons, scrapers, etc. (Just Like Dad's, Rt. 1, Box 71, Benson, Ill. 61516 ph 309 394-2211)

I made a nifty pressure washer for about \$4 worth of miscellaneous parts. I built it to wash out radiators but after I started using it I found it's strong enough to wash mud and dust off combines and tractors. It's cheap and easy to make.

All you need is a 12 to 18-in. long piece of 3/4-in. pipe with threads at either end. Put an L-shaped fitting on one end and then put a solid 3/4-in. cap over the end of the L. At the other end of the pipe, screw on a garden hose fitting. The last step is to drill a small hole in the cap at the end of the pipe. The smaller the hole, the more pressure you'll have for washing.

Just hook up to normal water pressure. Works great on radiators because the L-shaped fitting lets you slip it between the radiator and fan to blast out dirt. (Joel Bordelot, Rt. 1, Box 49G, Moreauville, La. 71355)



We have just developed and plan to market a machine that'll cut used tires in half lengthwise or take either sidewall off. It also lets you cut the tread in half after the sidewalls are cut off. Any rancher or feedlot operator who uses tires to cover silage and grain piles knows how messy and heavy tires full of water and rotten grain or silage can be. With the tires cut in half, they still do a good job of anchoring down plastic and are much easier to handle. By cutting tires in half you also reduce the storage area by half. We also use this machine to cut sidewalls off tires so they can be turned inside out to make troughs or feeders for livestock.

Also, we have used tires for 4 years to control water erosion on sandy and gravel outbanks to reduce washouts. Another use is to place half tires around small trees to help retain moisture.

This machine is small, portable and economical to operate. It's powered by two 110-volt 1/2-hp. motors and runs at slow speed with no smoke or heat created. A set of small gripper wheels rotates the tire over a small circular cutting wheel to slice tire. It's capable of halving a 16-in. tire in 40 sec. (Allan & Chris Brown, Box 385, Marwayne, Alberta, T0B 2X0 Canada ph 403 847-2670)

Continued on next page