



New axle (bottom) is wider and heavier than original (top).

**"IT WON'T BREAK OR BEND"**

## Heavy Duty Extra Wide Combine Axle

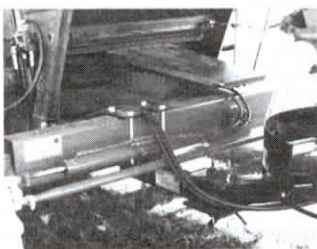
"Our new heavy duty extra wide axle for Deere and Case-IH combines is built much stronger than original factory axles. It won't break or bend under tough conditions or when the combines are fitted with grain bin extensions," says Randy Boude, Fast Lane Products, Belmond, Iowa.

The 4 by 8 by 3/8-in. thick steel axle can be adjusted so the combine's rear wheels track behind the front wheels. "It allows the rear wheels to be spaced on up to 120-in. centers, greatly improving stability," says Boude. "It also allows you to use larger grain tanks. It uses the original factory spindles and hole spacings and is compatible with factory drive axle spacers."

The axle comes with tie-rod tube, steering hose extensions, stabilizing drag links, and bushings.

Sells for \$1,129.

The company also sells a new "single arm" hydraulic-powered chaff spreader equipped with a protective safety ring. The swing arm allows for ease in sieve adjustment and maintenance. By removing two



Axle installed on combine, together with bolt-on swing-away hydraulic-powered chaff spreader.

pins and two hose disconnects, the entire swing arm assembly can be detached from the mounting arm. The spreader is equipped with replaceable rubber batts for added safety.

A single spreader sells for \$726 and a double spreader sells for \$1,453.

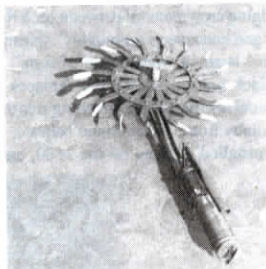
Contact: FARM SHOW Followup, Fast Lane Products, Box 65, Belmond, Iowa 50421 (ph 515 444-7311).

## "Bearing Saver" For Rotary Hoes

You can double or maybe even triple the life of your rotary hoe, thanks to the ingenious new "Wilhelm Bearing Saver" introduced by Feldt Sales, Park, Kan.

This first-of-its kind greaser for greaseless bearings allows you to quickly and easily force a generous shot of grease into new or old rotary hoe bearings without having to remove the bearing. You simply remove each row wheel and give it a spin so it's turning as you force grease into its "greaseless" bearing with the Bearing Saver injector jig.

"The secret to its success is having the spiked wheel turning as it's being greased under pressure — without damaging the seal," explains Anthony Feldt, manufacturer and co-inventor (along with Harold Wilhelm, of Happy, Texas) of the device. "We're recommending that it be used once a year to double or triple the life of both new and used rotary hoe bearings. Once you've dis-assembled the spike wheels, it only takes a few seconds to put the wheel, with the bearing left intact and in place, into the



It takes only a few seconds to put hoe wheel in jig and give it a shot of grease.

tailor-made jig and give it a generous shot of grease."

Sells for \$99, including the grease gun. Feldt is finalizing plans for marketing a universal rig that will grease all types of greaseless bearings up to 2 in. inside diameter.

For more information, contact: FARM SHOW Followup, Feldt Sales, Rt. 1, Box 2, Park, Kan. 67751 (ph 913 673-4280, or 4281).

### MOUNTS ON BACK OF SEED TUBE

## Add-On "Seed Firmer" For Row Crop Planters

"It presses seed down into the bottom of the furrow to improve seed-to-soil contact," says Eugene Keeton, J & K Enterprises, Trenton, Kent., about his new "seed firmer" attachment for row crop planters.

It consists of a 16-in. long abrasion-resistant curved nylon "paddle" that fastens onto the back of the seed tube with two nylon tie straps. Unit can be adjusted to increase or decrease downpressure with an adjusting screw.

"They work better than angled press wheels, which squeeze soil into the top of the furrow but often leave air pockets at the bottom. They also work better than 5-in. dia. poly wheels that mount between the disc openers and closing wheels because those tend to drag seeds along the trench in wet soil conditions.

"This paddle is only 3/16 in. wide at the bottom. It's a little narrower than the seed trench so it doesn't disturb the sidewall and doesn't drag seeds. It puts seed at the bottom of the furrow where there's more moisture, and it lets you reduce down pressure on the angular press wheels. Also, it has no bearings to wear out."

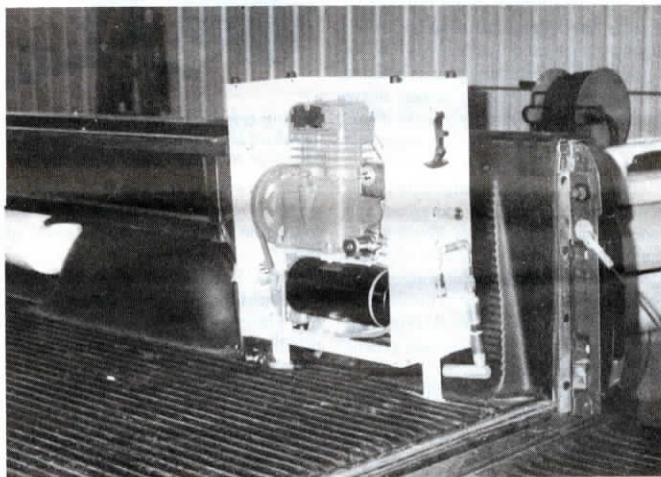


Curved nylon paddle fastens to back of seed tube with two tie straps.

Fits Deere, Kinze, White, and New Idea planters. Seed firmers for Case-IH planters and for grain drills are in development.

Sells for \$20.

Contact: FARM SHOW Followup, J & K Enterprises, 2180 Bell Chapel Road, Trenton, Kent. 42286 (ph 502 265-2709).



Compressor mounts in back corner of pickup (photo shows it with cover off). An air tank can be mounted ahead of wheel well.

### SELF-CONTAINED 12-VOLT UNIT IS 8 1/2 IN. WIDE AND 16 IN. LONG

## 12-Volt Portable Air Compressor

This new compact 12-volt air compressor works great for operating air tools, filling tires, cleaning out radiators, etc., and is small enough to fit in the corner of your pickup bed.

The compressor is enclosed inside an 8 1/2-in. wide, 18-in. high, and 16-in. long steel box that fits behind or ahead of the wheel well. A 12-volt DC motor powered by the pickup battery belt-drives the pump. Two quick coupler outlets mount on the side of the box.

"There's still room in the bed for a 4-wheel ATV or a 4 by 8-ft. sheet of plywood," says inventor Dennis Goertzen. "It's not as bulky as gas engine-powered com-

pressors and it's less expensive. Two models are available, one with a single cylinder pump and one with a twin cylinder pump. They sell for \$750 and \$875, respectively. The single cylinder model delivers 3.5 cfm's and weighs 85 lbs. while the twin cylinder model delivers 6 cfm's and weighs 100 lbs. Both deliver 100 psi continuous, and 150 psi intermittently."

Most farmers bolt the compressor to the pickup bed and leave it there. A small air tank can be mounted ahead of the wheel well.

Contact: FARM SHOW Followup, Goertzen Enterprises, Rt. 1, Box 157, Henderson, Neb. 68371 (ph 402 723-4985).