

The "Blocker" consists of piece of 20-in. long black plastic tubing with inflatable, airtight bladder on one end.

## INFLATABLE BULB INSERTED INSIDE COW

# New "Blocker" Solves Prolapsed Uterus Problem

By Linda Ford

Arnold Guhle and his son, Giraud, who have a cow-calf operation near Daysland, Alberta, have come up with a solution to the problem of prolapsed uteruses in cows and bred heifers.

Their new "Blocker" painlessly holds the uterus in place inside the cow and is easy to insert and remove. It consists of a piece of black plastic tubing about 20 in. long. On one end is an air valve and a mechanism for fastening the tubing to a nylon harness that holds the Blocker in place inside the cow. On the other end is an inflatable, airtight bladder. The unit is left in place inside the cow for three days, then removed by releasing the air from the bulb after the cow's cervix has shrunk back to normal size. The plastic tubing is discarded for sanitary purposes, but the rest of the unit can be cleaned and reused.

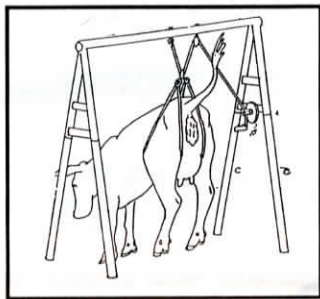
The harness fits over the cow's shoulders and around her hips and can be adjusted in three different places to fit any size cow.

"We had a heifer professionally pinned that was still straining against the pins after the third day. She had quit eating and was fading fast. Infection had already set in. We removed the pins and put the uterus back in place, then installed the Blocker. It extends inside the animal so the uterus can't be forced back into the birth channel, giving the cervix time to shrink back to normal size. The heifer completely recovered even though she still had a badly scarred vulva where the pins had taken the pressure of three days of pushing," says Arnold.

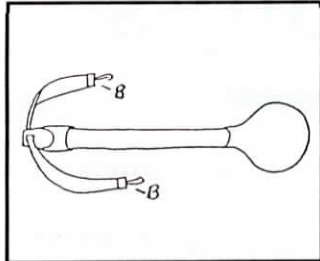
Last spring one of Guhle's neighbors had a second-calf heifer that had her uterus out for 24 hours. In desperation, he called the Guhles and they helped him put the uterus back in place and insert the Blocker. The cow recovered so well that she has been rebred.

"Last year the Blocker was used on eight animals and they all recovered. We haven't lost one animal," says Guhle, noting that installation is easier if done as soon as possible after the animal prolapses.

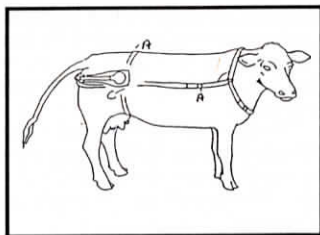
The first step in treating a prolapsed uterus is getting it back in place. Lifting the back of the animal relieves the outward pressure and causes a slight vacuum or suction so that the internal organs almost flow back in. In order to make lifting easier, the Guhles have developed another product called the



Lifter secures cow in rear-up position.



The "Blocker", inflated and ready to insert. Strap attaches to harness.

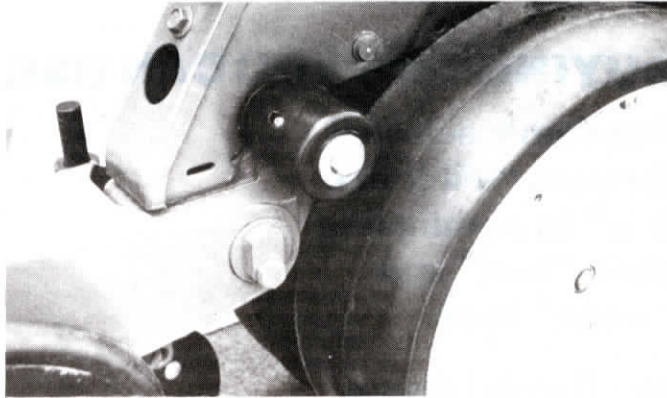


Harness holds "Blocker" in place inside the cow.

"Lifter". It has an 8-ft. high frame built from steel tubing and is hinged, allowing it to be collapsed for easy mobility. Nylon straps fit under the cow's hips and are connected to a pulley and crank, allowing the cow's hindquarters to be easily raised off the ground. The uterus can then be quickly put back in place and the Blocker inserted.

"The Lifter gently and painlessly lifts the cow," says Guhle.

Sells for \$350.  
Contact: FARM SHOW Followup, Arnold Guhle, Box 403, Daysland, Alberta, Canada T0B 1A0 (ph 403 374-2275).



Cover fits over pivot point, allowing it to move freely. Access hole allows you to grease the joint without removing the cover.

## KEEPS ARM PIVOTING FREELY BY KEEPING DUST AND DIRT OUT

# Bolt-On Dust Cover For Deere Planter Pivot Arm

Nebraska farmer Steve Quigley says his new bolt-on covers for pivot arms on Deere Max-Emerge planters keep dirt and dust out of the pivot point.

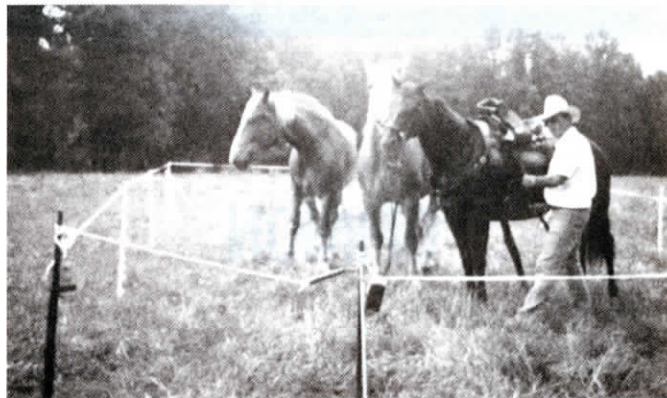
"The pivot arm must be greased frequently to keep it moving freely so seed will be placed at the proper depth," says Quigley, who farms near Indianola. "Even when the pivot point is well-greased, dirt often works its way in, freezing it up. When that happens, seed is placed erratically, sometimes even on top of the ground. Once the pivot arm freezes up, no more grease can be put into it and you have to stop to clean it out. Each joint takes about 15 min. to clean out and there are two pivot arms for each planter row. That means it's about a 3-hour job to

service my 6-row planter. In addition, when dirt gets into the pivot point, the shaft wears out faster than it should."

Quigley designed covers that fit over each pivot point, allowing it to move freely and with an access hole so you can still grease the joint without removing the cover, which attaches using the existing pivot arm bolt and a washer. "Now, instead of greasing several times a day, I can go two or three days between greasings with no problem."

Quigley Covers sell for \$9.50 per row (a set of two).

Contact: FARM SHOW Followup, Schaffert Mfg. Co., Inc., Rt. 1, Box 157, Indianola, Neb. 69034 (ph 800 382-2607 or 308 364-2607).



"Corral-In-A-Bag" kit provides temporary containment for horses and is easy to put up or take down.

## TEMPORARY "ELECTRIC FENCE"

# "Corral-In-A-Bag" Portable Horse Fence

New "corral-in-a-bag" portable electric horse fence is easy to put up and take down wherever you need it.

It consists of a battery-powered energizer, 330 ft. of bright white polytape on a reel, 16 heavy-duty posts, ground rod, and insulated gate handle. All components fit

into a duffle bag. Works great for trail rides, shows, or any other event where temporary enclosure is needed. Sells for about \$225.

Contact: FARM SHOW Followup, Gallagher Power Fence, Inc., P.O. Box 708900, San Antonio, Texas 78270 (ph 800 531-5908).