

REFIT KIT CARRIES HOT WATER HEAT INTO FURNACE DUCTWORK

Heat Your Home With Your Hot Water Heater

"It makes use of heat that would otherwise sit idle in your hot water heater," says George Engel, Pawnee, Ill., manufacturer of an add-on kit that turns your hot water heater into a supplementary heat source.

The conversion kit consists of a heat coil that installs in the ductwork on the cold air side of the furnace, a 1/20 hp. electric pump that draws water from the water heater to the heat coil, a pressure relief valve, and a check valve. The pump is wired into the thermostat so that it only pumps water out of the water heater when called for. The heat coil heats the plenum of the furnace and the blower carries the heat throughout the house.

"We've had savings as high as 65% over conventional, unmodified heating systems," says Engel, noting that the system is designed only for gas water heaters. Electric water heaters don't have enough capacity.

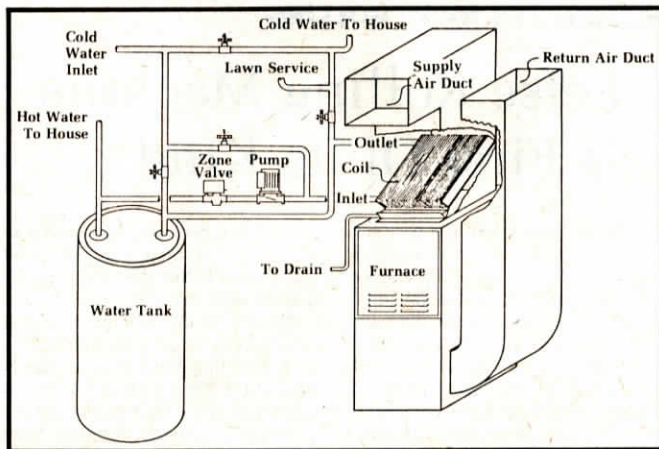
Engel says the add-on kit doesn't affect the performance of water heaters. "We think it makes them last longer because water doesn't sit idle in them, which allows sediment to settle out."

The key to the system, Engel adds, is the fact that water heats better than air, accounting for the increased efficiency of the system. The kit can be installed by do-it-yourselfers or local plumbing contractors.

The conversion kit sells for \$790. A complete furnace, complete with a blower designed to stand alone along side water heater, sells for \$1,389.

For more information, contact: FARM SHOW Followup, Dodd Design, Inc., Rt. 1, Box 16, Pawnee, Ill. 62558 (ph 217 625-2811).

A Canadian firm sells the Hydrocoil, a hot water conversion kit that retrofits to force air furnaces. A heat exchange coil simply mounts in the ductwork and water is piped to it



Drawing above of Hydrocoil system illustrates how hot water coil installs in existing furnace. Photo below shows an actual installation of Dodd Design's hot water heat coil.

from the water heater with a small electric pump. It's connected to the thermostat for completely automatic operation. Sells for \$1,150 installed (U.S.).

For more information, contact: FARM SHOW Followup, D.W.S. Energy Ltd., 927 119-4th Ave. S., Saskatoon, Sask. S7K 5X2 (ph 306 934-2400).



SECRET TO ITS SUCCESS IS ITS HEXAGON SHAPE

This Rod Weeder's Ground Propelled

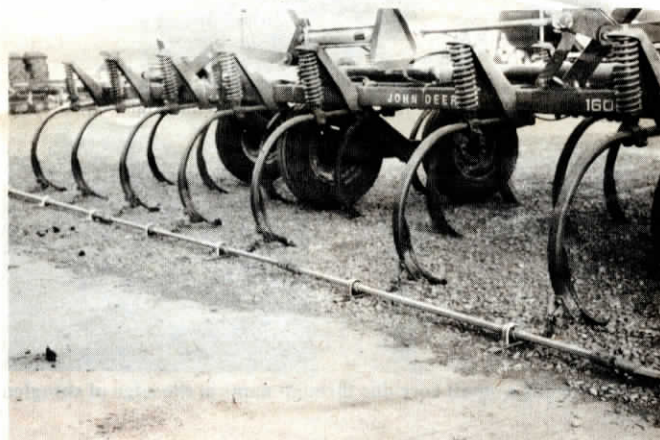
"It's excellent for incorporating chemicals, killing weeds, leveling, and for making seedbeds," says Walter Isaac of Coaldale Iron Products, about his company's new ground-propelled hexagon rod weeder attachment for field cultivators, chisel plows, disks and air seeders. "The secret to its success is its hexagon shape. The edges make the 1-in. dia. rod turn faster and they bring weeds to the surface better than a round rod.

"In wet soils, or where there's heavy trash, we recommend using our hydraulic power drive rod weeder. But for normal conditions,

this lower-cost, ground-driven hexagon rod really does the job," Walter told FARM SHOW.

Flexible pull chains adjust in length to provide desired depth control of the rod. The shorter the chain, the deeper the rod's performance. "We recommend running it 1½ to 2 in. below the soil surface," says Walter.

The rod rotates on long-wearing, sealed Fafnir bearings which ride on replaceable wear shoes. The most popular rod lengths sold are 5, 6 or 7 ft. Special universal coupler joints link individual rod section together, providing flexibility for rolling and



Flexible chains adjust in length to provide desired depth control of the pull-behind rod which drives itself on sealed bearings.

rocky conditions. The couplers are easily unhooked to allow for folding of wing-type equipment.

Sells for \$30 to \$33 per lineal ft. (Canadian dollars).

For more information, contact: FARM SHOW Followup, Coaldale Iron Products, Box 3, Coaldale, Alberta, Canada TOK OLO (ph 403 345-3973).

SELF-CONTAINED "SNOW MOLE" POWERED BY ITS OWN ENGINE

Snowblower For Pickups

"It's completely self-contained. Requires no pto and no engine mounted in the back of the pickup," says the manufacturer of the new "Snow Mole" pickup-mounted snowblower.

The 88-in. wide Snow Mole is powered by either a 25-hp. Onan engine or a specially-designed Volkswagen 1600 cc engine. The 500-lb. rig attaches quickly with just three pins — once the mounting brackets have

been installed. It raises and lowers hydraulically and has an adjustable snow discharge chute. All controls are in cab.

The Snow Mole has a 26-in. cutting depth but can be set up to handle snow as deep as 3 ft.

The blower can be painted to match your vehicle. Made from readily accessible parts. Four models are available, ranging from \$5,395 to \$9,395,



"Snow Mole" motor mounts directly atop blower which can handle drifts up to 3-ft. deep.

depending on engine size desired. For more information, contact: FARM SHOW Followup, Cascade

Mfg. Co., P.O. Box 327, Mt. Hood, Ore. 97041 (ph 503 352-7175).