



Snowblower Car Attachment

Minnesota inventor Gregg Knutson, of Oakdale, turned his "walk-behind" snowblower into a "ride-behind" which he operates from the comfort of a car, van or pickup. He also increased the snowblower's capacity by adding 30 in. wide wings on each side. The converted rig clears a path of snow the width of the vehicle on each pass.

Knutson can stop or electric start the snowblower from the driver's seat, but has to step outside to manually adjust the goose-neck discharge chute, and to engage the auger. The metal cradle which guides the snowblower will accommodate 24 to 36 in. wide walk-behinds. The cradle attaches to the car or pickup via two metal brackets mounted on the underside of the vehicle's

front end. "The invention is designed to guide the snowblower over the surface of any driveway," says Knutson. "No retooling of the snowblower or the vehicle is required." The 30 in. side wings can be adjusted manually (from outside the vehicle) to push snow into or away from the snowblower.

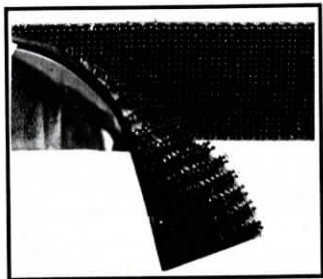
Knutson has applied for a patent on his invention and hopes to have it on the market yet this year. He anticipates it will retail for approximately \$550.

For more information, contact: FARM SHOW Followup, Inventions Unlimited, Gregg Knutson, Pres., 2951 Granada Lane, Oakdale, Minn. 55128 (ph 612 770-9383).

New Specialty Tools For Your Workshop

Kar products has introduced a toolbox full of new problem-solving specialty "tools" for farm workshops. Take your pick:

Velcro-Type All-Purpose Fastener: This handy new way to hang and mount things — such as radios, lights, SMV signs, picture frames or curtains — is 1 in. wide and comes in a 5 ft. roll. The two strips have an adhesive backing on one side. Velcro provides high strength (up to 40 lbs. per sq.



in.) of reclosable fastening on a wide variety of surfaces (wood, metal, glass, plastic or cloth).

To hang portable lights on the back of a wagon, for example, you'd use two strips, each about 4 in. long. Affix one adhesive-backed strip to the wagon, and the other to the portable light assembly. A 5 ft. roll retails for \$15.94.

All-Purpose Adhesive/Sealant: Billed as "the best all-purpose adhesive money can buy", it dries tack free in 10 min. Said to be ideal for outdoor and marine use, the clear adhesive bonds to metal, wood, glass, plastic and rubber surfaces and is both paintable and non-corrosive. A 3.7 oz. tube sells for \$12.86.

Liquid Thread Lock: Designed to pre-

vent nuts from working loose even under extreme vibration, Vibra-Tite is easily brushed on. Once treated, a nut and bolt can be readjusted up to 5 times and still remain vibration-proof — without having to be retreated. A 30 cc bottle with applicator brush sells for \$27.02.

Grease Injector Needle: Designed to snap onto all standard grease guns, it makes it easy to "needle" grease into greaseless bearings, or universal joints and other hard-to-reach places, without having to dismantle equipment. Made of stainless steel, it sells for \$6.95, including plastic protective cover.

Top-Quality Hack Saw Blades: High speed steel cutting edge is electron beam welded to a separate alloy back to provide "the ultimate" in strength, flexibility and cutting power. Shatter-proof bimetal Karflex 2 blade will reportedly outlast conventional blades "at least 5 to 1." Packet of 10 blades, 12 in. long and 1/2 in. wide and with 24 teeth per inch, sells for \$44.10.

For more information, contact: FARM SHOW Followup, Kar Products, Bob Kerfeld, Area Manager, 6374 Dawn Way, Inver Grove Heights, Minn. 55075 (ph 612 451-0412).

Low-Cost Electrified Drive Through Gate

You'll like the price tag on this new electrified drive-through livestock gate introduced by Gerald Recker, Dyersville, Iowa.

It sells for \$55, which is about half the cost of competing gates, according to Recker. For another \$20 you can buy optional streamers to make the electrified gate more visible.

The spring-loaded gate connects to any

Gas-Powered Portable Battery Charger

"There was a real need for an inexpensive portable battery charger that would let you get equipment started without having to fool around with electrical cords and also be useful in remote areas where electricity is not available," says Howard Johnson, manufacturer of a new gas-powered portable battery charger that's powered by a small 2-cycle Tecumseh 1 1/2 hp. engine.

He notes that the only other type of gas-powered chargers available are commercial car starting quick chargers often found on tow trucks that cost \$3,000 to \$4,000. Johnson's 50-amp unit weighs just 35 lbs. and will fully charge a big battery in 10 to 15 min. It's fitted with cut-out switches that prevent overcharging.

Sells for \$349.

Contact: FARM SHOW Followup, Howard Johnson, Johnson Mfg. and Sales, Inc., N5499 Cty. E., Ogdensburg, Wis. 54962 (ph 414 244-7581; fax 414 244-7580).



Convenient New Cargo Protector For Pickups

You don't have to make any modifications on your pickup to protect valuable cargo with Box-Buddie, a large zippered bag that fits into the pickup bed.

"A major disadvantage of conventional toppers is that you have to make modifications to your pickup to install them, such as drilling holes. What's more, the topper changes the truck's aerodynamic design and obstructs vision when backing or parallel parking.

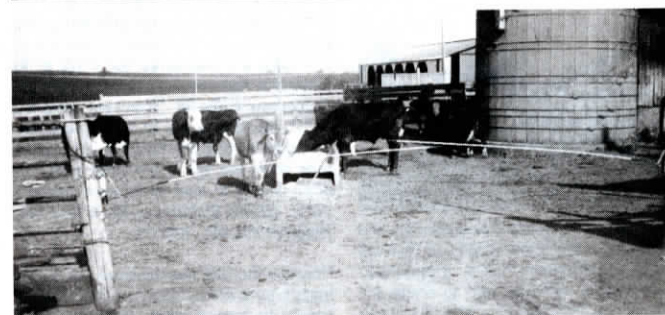
"Out new Box-Buddie protects cargo without any such modifications or inconveniences," Robert Nelson, inventor-manufacturer, points out.

The large rectangular-shaped bag, made

of 200 Denier Nylon and two coats of polyurethane, is 42 in. wide, 60 in. long and 20 in. high. When not in use, it folds into a compact package that stores behind or under the seat. It's zippered on three sides and comes with built-in D-rings and tie-down straps for securing the water-tight bag and its contents to the pickup bed.

Box-Buddie for standard size pickups sells for \$185. Smaller model for foreign pickups sells for \$169. Available only in black.

For more information, contact: FARM SHOW Followup, Cargo Keep'r Mfg. Co., Robert Nelson, Pres., P.O. Box 22, Chisholm, Minn. 55719 (ph 218 254-7484).



electric (battery or 110-V) fence controller (not supplied). It's self-opening and closing, and its 3/8 in. dia. flexible fiberglass swinging arms adjust to span gate openings up to 20 ft. wide. It can be locked in the open position and has an insulated handle for pedestrian walk-through. Protective tips on

the outer ends of the swinging arms prevent scratching of vehicles or tractors as they're driven through.

Contact: FARM SHOW Followup, Gerald Recker, 1082 1st St. SW, Dyersville, Iowa 52040 (ph 319 875-7378).