

# Made It Myself

(Continued from previous page)



## Skid-Steer Backhoe

A South Dakota farmer who couldn't buy a backhoe for his skid steer loader successfully built his own.

Richard Shaffer, who farms near Dixon, built the backhoe for his Rounder skid steer loader. It digs down to a depth of 6 ft. with an 8-in. wide bucket. The bucket mounts on a 5-ft. shaft built from 2 by 4-in. sq. tubing. The trickiest part of the building job was positioning the 30-in. cylinder, which he salvaged from

an old Farmhand loader.

"First I tried a shorter cylinder mounted up close to the bucket but I couldn't get the full range of movement needed for the bucket. It was a matter of trial and error to find the correct position for the 30-in. cylinder," says Shaffer. His brother-in-law built the bucket.

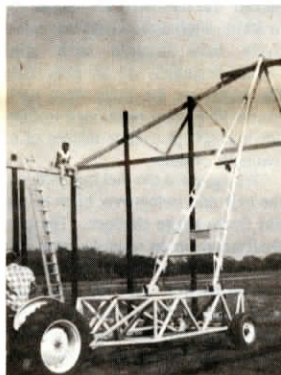
Contact: FARM SHOW Follow-up, Richard Shaffer, Rt. 5, Box 97, Dixon, S. Dak. 57533 (ph 605 835-8281).

## Boom Lift For Farm Buildings

"When my son Mike started building barns 6 yrs. ago he had a difficult time setting the poles and lifting trusses. He had to do it either manually or by hiring a crane," says Albert Jacobi, Lawton, Okla., who solved the construction problem by building a compact "pull-behind-a-pickup" boom lift.

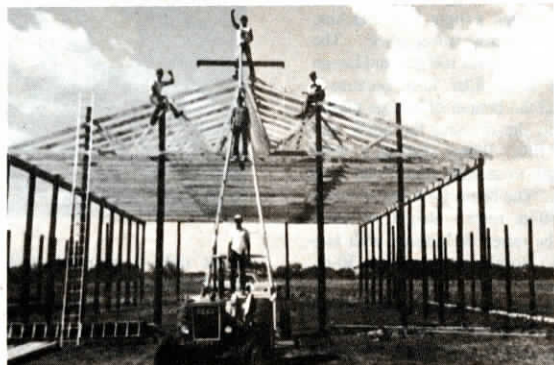
"We started work on it in my farm shop in the winter of 1985. After about two months of head scratching, we came up with a workable design," says Jacobi. The boom, made from heavy tube steel, rides on its own chassis. It comes in three sections which slip together, one end over the other, in minutes to extend it to its maximum length 27 1/2 ft. from the ground which'll reach the peak of most farm buildings. Jacobi says it could easily be extended for longer lifts.

"It will lift about 1,200 lbs. with the longest extension in place, more than enough for most trusses. With no extensions in place it'll lift 4,000 lbs. It's extremely maneuverable, and moves easily up and down with



a pair of 3-in. hydraulic cylinders. Folds flat for transport. My son has used it for 2 yrs. and is very satisfied," says Jacobi, who's looking for a manufacturer to build the boom lift.

Contact: FARM SHOW Follow-up, Albert Jacobi, Rt. 1, Box 120, Lawton, Okla. 73501 (ph 405 365-4341).



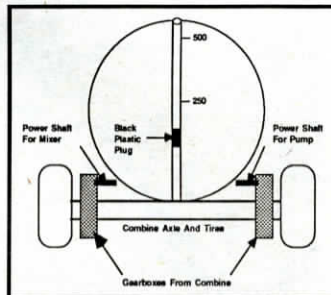
## Combine Drive Axle Sprayer

Butch Rux, Wilbur, Wash., built a unique pull-behind sprayer using a combine drive axle and other "junk" parts for a cost of about \$2,000.

The sprayer features a boom that can be extended from 45 ft. in width to 72 ft., as needed. The spray tank mounts on a combine axle taken from a salvaged International 181 combine, but Rux says you could use most any combine drive axle. He left the gearboxes in place on the axle and uses them to drive both the spray mixer and pump.

Rux equipped the sprayer with a silver spray marker built from a used air conditioner pump and an old gas tank. The spray marker is controlled by a cab-mounted "brain" that Rux rigged up using an automobile windshield wiper delay switch. The switch, which controls solenoids at either end of the boom, lets him drop a silver mark in the field at intervals from 1 to 20 sec. It can also be overridden manually.

Another feature on Rux's home-



built sprayer is an "easy view" plug he installed in the volume sight tube on the spray tank. "Sometimes it's hard to see the liquid in a tank. This dark floating plug makes it easy to check volume at a glance," he says. He made the plug from a piece of black plastic pipe plugged on both ends.

Contact: FARM SHOW Follow-up, Butch Rux, Rux Ranch, Rt. 1, Box 107A, Wilbur, Wash. 99185 (ph 509 647-5723).



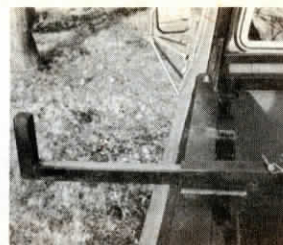
## Multi-Purpose Pickup Rack

You'll like this adjustable pickup rack built by Dave Stamy, Marion, Iowa.

"It lets us easily haul items wider than the pickup box and hook up to goosenecks without removing the rack," says Stamy.

The rack consists of side-mounted support bars that mount along the top of sidewalls. Rubber strips inserted between the bars and the pickup box protect the paint job. The two side bars mount to the pickup with four J-bolts and take less than 5 min. to remove or install.

Moveable support racks on top of the side bars can be positioned anywhere along the length of the pickup box to fit whatever you're hauling. They extend out to the



side as well for wide loads. A grill fitted behind the cab protects from sliding cargo in the event of an accident.

Contact: FARM SHOW Follow-up, Dave Stamy, 607 Stamy Rd., Marion, Iowa 52302 (ph 319 395-7703 or 314 581-6648).

