

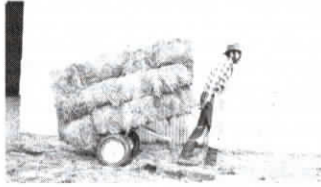
BALANCED TO MAKE AN EASY LOAD

Hand Cart Hauls 12 Bales At Once

"Anything that saves time and effort is welcome in my one-man operation and this bale cart works great," says Bill Mushake, Rice, Texas, who designed and built a 12-bale 2-wheeled hand cart.

Mushake uses the cart both for feeding and when baling. "I used to go back and forth between barn and feeder carrying two bales at a time and getting jostled by cows all the way. I get done much faster and easier. After baling, I use the cart to accumulate bales into a number of piles so loading them onto trailers requires fewer stops and less walking," says Mushake.

The cart is about 80 in. long and 21 in. wide with two 38-in. uprights at one end. It stands 22 in. off the ground. Weighs 95 lbs. The main frame was fashioned out of 2-in.



Mushake's 12-bale 2-wheeled hand cart is used both for feeding and when baling electrical conduit while most of the bracing was salvaged from a junked hide-a-bed sofa. The axle is a standard small trailer type with spindles attached. Mushake bought the 12-in. wheels new. Total cost was about \$70. Contact: FARM SHOW Followup, Bill Mushake, Rt. 1, Box 225, Rice, Tex. 75155 (ph 214 326-5621).

SEE-THROUGH SHADES BLOCK OUT 80% OF SUN'S RAYS

Sun "Screens" Keep Cab Cool In Summer

You can block out the sun and still see equipment with new sun "screens" manufactured by Calvin Strecker, S & S Supply, Inc., Chattanooga, Okla.

Strecker says his Econo Shades make use of a new vinyl-coated fiberglass screen that blocks out 80% of the sun's rays and yet doesn't totally obstruct any part of the window the way fin-type shades would. "The screen won't stretch, shrink, rust, burn or unravel. It's flexible and yet tough for long use," says Strecker.

S & S Supply makes shades to fit most late model tractor cabs and some popular older models, and they can custom-fit any tractor, combine or other cab. The shades attach inside the window with velcro strips so they can be quickly removed when not needed (they roll up in a storage tube) or folded down for night work.



Vinyl-coated fiberglass screen shades attach inside window with velcro strips.

Retail price for a 3-window cab is \$80 to \$85. A set of screens for a 5-window cab sells for \$95 to \$99.

For more information, contact: FARM SHOW Followup, Calvin Strecker, S & S Supply, Inc., Box 5, Chattanooga, Okla. 73528 (ph 405 597-2402).

KEEPS OIL CLEAN, MAKES CHANGING EASY

Oil Cleaner Adapter For VW Engines

Most engine work on VW engines used in spray coupes, for irrigation, and in other farm equipment as well as in cars and pickups can be traced to problems with dirty oil, says Jim Cofield, Brown Carburetor Co., manufacturer of a new add-on oil filter adapter for VW engines.

The problem is that the air-cooled engines don't have easily replaceable oil filters. "Once this adapter is installed, you never have to pull the oil screens again. It's a full-flow filter that doesn't drop oil pressure at all," says Cofield, noting that the adapter installs ahead of the oil pump which "is better than most oil filters because it filters the oil before it gets into the pump. If you blow a rod or damage an engine in some other way, the filter catches small parts



Add-on oil cleaner adapter installs ahead of the oil pump.

before they get into the pump and wreck it. The adapter also makes it easier to change oil. You just screw off the filter and let the oil drain."

Sells for \$29.95. Contact: FARM SHOW Followup, Brown Carburetor Co., Box 298, Groton, S. Dak. 57445 (ph 605 397-2305).



Dean Thompson built this bale wagon that holds one row of 5 or 6 bales from 5 lengths of pipe. One of the side bars on the trailer drops down for unloading by gravity.

"JUNKED" IRRIGATION PIPE IS AVAILABLE AND CHEAP

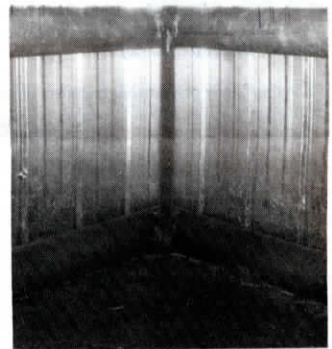
Bale Wagons, Calf Shed Built With Old Pipe

Nebraska farmer Dean Thompson says there's lots of old center pivot irrigation pipe available "for almost no cost" in his area and he's already taken advantage of that fact to build two bale wagons and a calf shed using the heavy-duty 6-in. dia. pipe.

The biggest trailer holds up to 14 5 1/2-ft. round bales or 17 5-ft. bales in two side-by-side rows. It was built with 7 lengths of pipe arranged in two cradles. Thompson grouped three trailer house axles together at center to support it, and mounted a gooseneck hitch at the front. "If I were building it again, I'd use one set of truck duals in place of the trailer axles because I've had some trouble with the tires on the trailer house axles when hauling around 8 tons. They're not designed to handle the weight," says Thompson.

He built a second, narrower bale trailer that holds one row of 5 or 6 bales. "We can't use the big trailer after dark because of the narrow roads in our area," notes Thompson. The trailer was built with 5 lengths of pipe and is fitted with a 3/4-ton Ford rear axle equipped with 16-in. tires. One of the side bars on the trailer drops down so the trailer can be unloaded by gravity without the need for a tractor loader.

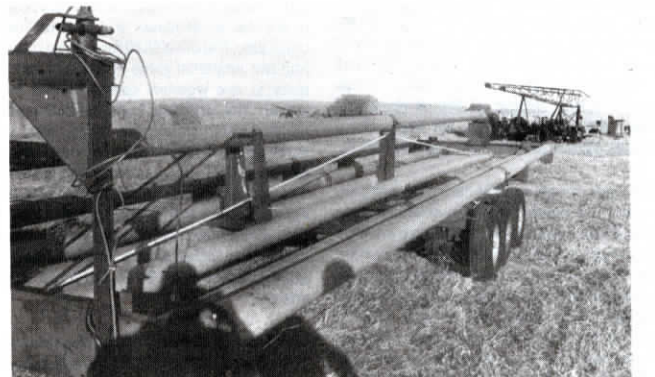
Thompson also built a calving shed out of pipe and says pipe would work great to put up other farm buildings. "This calving shed is portable so it needs to be extremely strong. We cut the ends of the pipe on 45° angles to form the corners and welded them all the way around, making for very rigid construction. Long lengths of angle iron mount vertically inside each corner, welded to the pipe, hold the pipe frames up. Sheet metal



Top: A rail across the open front of the portable calf shed keeps cows out and calves in. Above: Thompson cut the ends of the pipe on 45° angles to form the corners and welded them all the way around.

sides were screwed directly to the pipe. A rail across the open front of the shed keeps cows out and calves in," says Thompson, who "junks out" old center pivots for other farmers and keeps half the pipe as payment.

Contact: FARM SHOW Followup, Dean Thompson, HCR 72, Box 61, Sutherland, Neb. 69165 (ph 308 764-2430).



This trailer holds up to 14 5 1/2-ft. round bales or 17 5-ft. bales in two side-by-side rows. It was built with 7 lengths of pipe arranged in two cradles.