

Model 200, rated at 6,400 bu./hr., has two 28-in. dia. rotary screen drums.



The commercial model, rated at 8,000 bu./hr., has a 48-in. dia. drum.

FETERL "ROTARIES" HANDLE UP TO 8,000 BU./HR.

Big Grain Cleaners Match Big Augers

Two big new rotary screen grain cleaners introduced by Feterl Mfg., Salem, S. Dak., are designed to match capacity of big grain augers.

The largest, a commercial model, removes weed seeds, chaff, broken kernels, fines and foreign material from wheat, corn, soybeans and other grains at the rate of 8,000 bu./hr., which is also the rated capacity of Feterl's largest 12 in. by 120 ft. grain auger. It's totally pto-driven and equipped with a 12 ft. long rotary screen drum measuring 48 in. in dia. Retail for \$8,750.

Also new from Feterl is the Model 200, rated at 6,400 bu./hr. It's a twin unit, made up of two Model 100 rotary screen cleaning

drums (each 96 in. long and 28 in. in dia.) placed side by side. The drums are pto driven; the fines discharge auger can be driven by electric or hydraulic motor. Sells for \$5,975.

"The gentle action of the flighting in Feterl-built grain cleaners moves grain through the rotary drums, providing a continuous turning effect to assure that all grain is exposed to the screen where dockage is removed," notes Ron Feterl.

For more information, contact: FARM SHOW Followup, Feterl Mfg., PO Box 398, Salem, S. Dak. 57058 (ph 605 425-2183).

NO NEED TO REMOVE THE BUCKET

New "Easy-Mount" Bucket Bale Probe

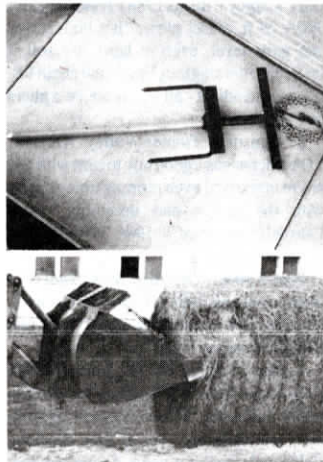
Slip a new "easy-mount" bale probe over the blade of your bucket and in less than a minute you're ready to move round bales.

"There's no need to remove the bucket or remove pins from the loader," says Phil Foster, manufacturer. "You simply hook the bale probe over the front edge of the loader bucket, wrap a chain around the bucket and tighten up the load binder. No tools required."

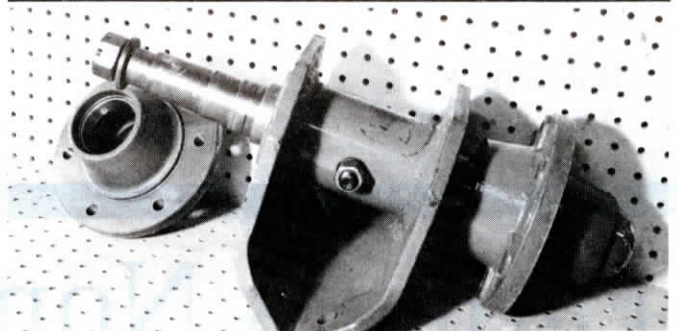
The probe, a solid 54 in. long, 2 in. dia. shaft, is bolted to the 1 1/2 ft. length of angle iron that slips under and over the blade of the bucket and serves as a support brace. Two short stabilizer rods keep the bale from turning. A 10-ft. long chain is welded to the under side of the angle iron bracket. In addition to holding the probe in place, the chain also reinforces the bucket edge so it can support the weight of the bale.

Fits virtually any loader bucket. Sells for \$225.

For more information, contact: FARM SHOW Followup, Farmer's Factory Co., Box 122, County Line Road South, Lec, Ill. 60530 (ph 815 824-2132).



Two short stabilizer rods on either side of 54-in. long, 2-in. dia. shaft keep bale from turning. No tools are required to attach bale probe to bucket.



Caster wheel assembly kit includes two 6,000-lb. hubs with tapered roller bearings.

Grain Drill Rebuild Kits

A North Dakota metal fabricator has come up with two new do-it-yourself rebuild kits for grain drills that solve two of the most common breakdown complaints.

Caster Wheel Assembly

"Anyone who operates an International hoe or press wheel drill has probably had trouble with the caster wheels. Our double-ended spindle solves the problem for good," says Bill Sand, who developed the bolt-on rebuild kit.

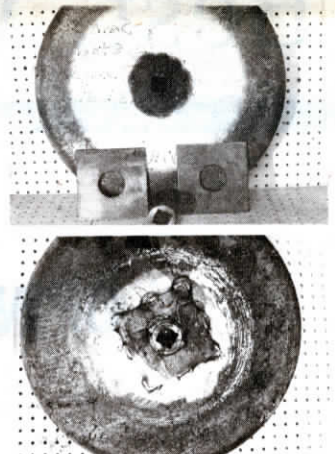
Sand says the problem with the caster wheels on IH 620, 6200, 7100 and 7200 drills (built from 1972 to present) is that on the original IH caster assembly, both wheels mount on a single shaft. "That causes problems because in order to caster properly, both wheels should be able to run at different speeds or even in opposite directions. Because they can't, the shaft gets twisted which leads to broken bolts or axles. Field service also becomes difficult and it's impossible to grease bearings," says Sand.

The kit includes two 6,000-lb. hubs with tapered roller bearings on a double-ended spindle. It's fitted with a grease zerk for easy service. "IH sells a replacement caster assembly for \$380. Our kit sells for \$300 and, once installed, you'll never have trouble with it again," says Sand.

Press Wheel Hub

Sand Iron's press wheel rebuild kit lets you rebuild solid steel packer wheels to "better than new" condition by cutting out the old hub and installing a heavy-duty hub which is machined from a solid 2 1/4-in. round bar of steel.

"The problem with most packer wheels is that the center hub is made out of light 1/8-in. thick steel. The more you tighten the



Top photo shows worn packer wheel with rebuild kit in foreground. Bottom photo shows rebuilt wheel.

hubs the more the hub wears until the sides of the wheels begin to collapse inward. Once you install our heavy-duty hubs in your existing press wheels you'll never have to touch them again and, while Deere, IH, Melroe and other manufacturers charge anywhere from \$80 to \$115 for replacement press wheels, you can install our rebuild kit for just \$15 per wheel," says Bill Sand.

To install the kit, you cut out the old hub and weld in the new one along with two 1/8-in. side plates. "The new hub totally eliminates the problem of wobbly press wheels and will outlast the life of the drill," says Sand.

For more information, contact: FARM SHOW Followup, Sand Iron & Steel, Inc., 400 East 8th Ave., HCR 3, Box 2C, Langdon, N. Dak. 58249 (ph 701 256-5111).