

**ALLOWS EACH WHEEL TO
TURN INDEPENDENTLY**

Caster Rebuild Kit For Case/IH Drills

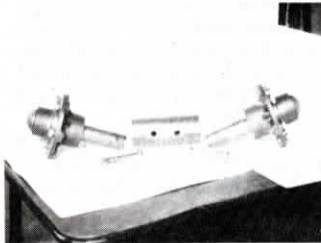
If you've got a Case/IH grain drill, you'll want to take a look at this new rebuild kit for the front caster assembly.

"The problem is that the two wheels on the caster assembly do not turn independently. Our changeover kit lets each wheel turn independently forward or backward, taking the strain off carrier bolts and spindles," says Gerald Johnson, of Johnson Mfg. Inc., also the manufacturer of Quik-Port drill transports and Quik Cap packer wheel steel re-caps.

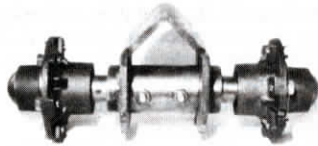
The new caster wheel kit can be installed without removing the caster carrier from the drill. You simply cut away the old axle and bearings, slide the new sleeve into the carrier, center it, and weld it into place. Then you simply insert both spindles (7,000-lb. hubs pressure packed with grease) into the sleeve and install the two mounting bolts.

"One advantage of our rebuild kit is that we lengthened the spindles so the hubs are farther apart which makes it possible to reverse the wheels, putting the convex side of the wheels, along with the valve stems, toward the outside. This configuration eliminates problems with broken valve stems caused by dirt and clods between the wheels and yet doesn't increase the width of the wheel assembly," says Johnson.

The rebuild kit sells for \$245 without the



Rebuild kit includes two new 7,000-lb. hubs. Can be sold as individual pieces (above) or complete with V-shaped carrier ready to bolt in place (below).



V-shaped caster carrier. Complete kits, already welded to the caster carrier and ready to bolt into place, sell for \$290.

For more information, contact: FARM SHOW Followup, Johnson Mfg., Inc., Box 76, Kulm, N. Dak. 58456 (ph 800 874-5600 or 701 647-2300).

**'LIKED IT SO WELL I DECIDED
TO BECOME A DEALER'**

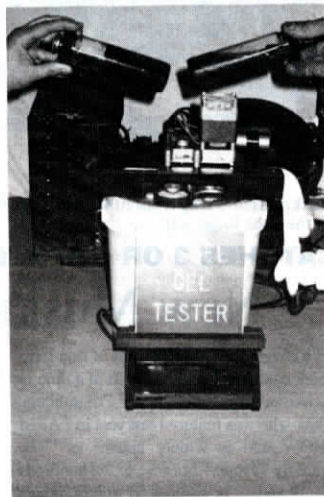
"Freeze-Proof" Treatment Winterizes Diesel Fuel

"I liked the product so well I decided to become a dealer," says Montana farmer Jim Woodburn, pleased with the performance of Wiseway Product's Anti-Gel for "winterizing" diesel fuels.

"The outstanding feature of this product is that it lowers the pour point of the base fuel 30 to 40°F. This one benefit alone will justify cost of the treatment, which is right at 7 cents per gal. of fuel. No. 2 diesel fuel treated with Anti-Gel will run at temperatures at least 15°F colder than a blend of 50% No. 2 and 50% No. 1 diesel.

"To demonstrate the fuel treatment and verify its performance at farm shows, I have assembled a portable freezer unit that tests fuel samples to -40°F (see photo). This tester uses a 1/3 hp, R-22 compressor and condenser unit salvaged from an old freezer. In addition to merely demonstrating the treatment, the tester allows me to test a customer's fuel prior to treating, and predict how it will perform after treatment.

"Although many summer No. 2 diesel fuels will flow down to -10°F, some will not pour below +10°F. Winter No. 2 diesel will pour down to -20°F. After treating with Anti-Gel, these fuels will flow at temperatures 30 to 40°F below their original pour point. The product contains no alcohol or other substances which could harm fuel systems," says Woodburn.



Portable freezer reduced untreated diesel fuel on left to solid mass of jelly; treated fuel on right was still flowable at 40° below zero.

For more information, contact: FARM SHOW Followup, Jim Woodburn, Wiseway Products, Box 324, Geraldine, Mt. 59466 (ph 406 737-4223).

**ONE SIZE HANDLES CATTLE,
HOGS, SHEEP AND HORSES**

"Non-Tippable" Mineral Feeder

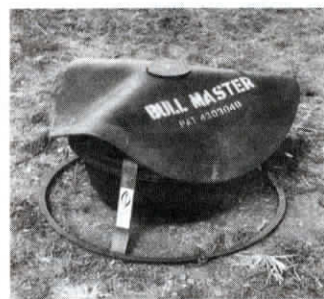
"It's weather-proof and virtually impossible for animals to tip," says the manufacturer of the new Bull Master mineral feeder for cattle, hogs, sheep or horses.

The floppy lid, made of rubberized plastic, overhangs the 150-lb. capacity Fortex tub, also made of plastic. Livestock nose up any one of the four corner lids to get at the mineral. Several animals can eat at one time.

Animals don't have any trouble whatsoever finding the mineral when the feeder is first placed in front of them," the manufacturer points out. "Their sense of smell attracts them to the feeder almost instantly."

The feeder will dispense minerals or salt in loose or block form. One feeder handles 50 to 60 cows, says Ray Hutton, national distributor.

"Its floppy lid makes the feeder virtually snow or rain tight. The harder the wind blows, the tighter the floppy lid seals against the tub. The feeder is easy to clean, and easy to move from one location to another. One

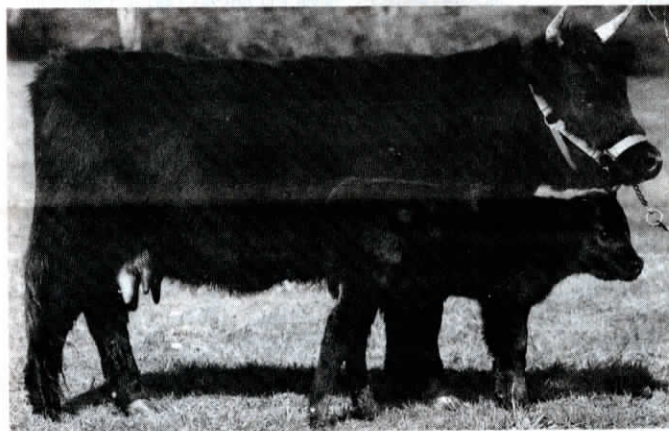


Feeder is virtually rain and snow tight and yet animals have no trouble learning how to use it.

person working alone can easily pick them up and toss them into the back of a pickup," says Hutton.

Sells for \$95.99.

For more information, contact: FARM SHOW Followup, Livestock Marketing and Sales, c/o Ray Hutton, Rt. 2, Box 75, Oslo, Minn. 56744 (ph 701 699-2606).



Dexter cows look like scaled-down Angus and stand just 36 to 42 in. high at shoulder.

BULLS WEIGH LESS THAN 1,000 LBS.

"Mini" Cattle Breed Raised For Milk, Beef

Pint-sized Dexter, a "mini" breed that originated in Ireland, are great for small families who like to produce their own milk and beef, says Gary Prichard, Eugene, Ore., who exhibits the breed at fairs and livestock shows.

Dexters look like scaled-down Angus. They're usually black, although they can also be red or greyish-brown. Mature cows stand 36 to 42-in. high at the shoulder and weigh not more than 750 lbs. Bulls range from 38 to 44 in. at the shoulder at three years of age and weigh not more than 1,000 lbs.

Prichard, who has been raising Dexters for 10 years, normally has 35 to 40 head. He knows of only one other herd as large as his. "I highly recommend them for small families that like to raise their own beef. You get a reasonable-sized carcass with a good proportion of meat-to-bone and you don't

have a lot of meat lying around getting freezer burn. The meat is darker red than most commercial beef and is tender and tasty," he told FARM SHOW. Carcasses dress out at 50 to 60% of live weight.

When cows are fresh they produce about three gallons of milk a day - milk that's rich in butterfat.

The Dexter breed was developed more than a century ago in Ireland. Its origin is obscure but it's assumed that it resulted from a cross between the Kerry and some other breed, most likely the Devon.

There are an estimated 1,500 Dexter cattle in the U.S., and 2,500 to 3,000 worldwide. Prichard says he gets \$600 to \$700 for his heifer calves and \$800 to \$1,200 for adults.

For more information, contact: FARM SHOW Followup, Gary Prichard, 85627 Dilley Lane, Eugene, Ore. 97405 (ph 503 747-7665).