



Single solid-state controller operates both 14-ft. sections making up 28-ft. wide gates.

KEEPS UNWANTED INTRUDERS OUT, AND LIVESTOCK IN

New Horn-Operated Gate Covers 28 Ft. Opening

Opening gates up to 28 ft. wide is as easy as sounding the horn on your car, pickup or tractor, thanks to a new electro-pneumatic operating mechanism introduced by Irontech, of Twin Falls, Idaho.

Without leaving the driver's seat, the new-style gate — available in either swing or lift-type models up to 28 ft. wide — opens automatically by a single horn blast, then closes automatically after you've driven through. In addition to horn operation, Irontech's gates (swing or lift type) can be equipped for combined horn and radio operation, allowing visitors to "announce" themselves while steady users pass through silently. An optional "hidden" manual push button can also be installed for silent entry.

Irontech's new 28 ft. wide dual lift or swing gates are made up of two 14 ft. sections. To reduce costs, both types are designed so a single solid state controller operates both sides. A small underground air line carries operating energy to the second or "slave" side, explains Wayne Skeem, president of Irontech.

The lift-style gate is available with single or dual telescoping square steel tubing (2 in.). This horizontal barrier can be equipped with hanging chain streamers and

connected to an electric fence to repel livestock. The lift gate can also be installed as a vehicle barrier for private roads, driveways and across cattleguards without connecting to an electric fence.

Irontech's automatic gates are operated by a 12-V battery which provides several hundred openings and closings on a single charge. An optional solar panel recharger can be added to make the battery virtually maintenance free.

"Every situation and need is different," says Skeem. "It can 'push' or 'pull' the gates open depending upon the circumstances and desires of the owner."

Prices start at \$298 for single lift or \$373 for single swing gate operator and range up to \$677 for a 28 ft. dual lift model with controller and two 14 ft. bars (made of 2 in tubing) on each side. Swing gates, either double or single, come in a kit with controller and mounting hardware. Owners then attach their own style of gate to the mounting brackets and hinge assembly which provides automatic opening and closing, explains Skeem.

For more details, contact: FARM SHOW Followup, Irontech, 1742 Targhee, Twin Falls, Idaho 83301 (ph 208 734-8296).

"Up Front" Equipment

Latest new "up front" equipment for Deutz-Allis and other tractors with front 3 pt. and pto is a stalk shredder and snow blower, introduced by Loftness Farm Equipment, Hector, Minn.

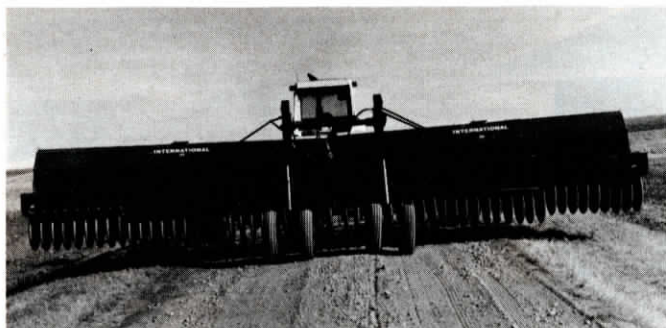
The new "beltless" model 180, 15 ft. shredder will work on the front of Deutz-Allis and other tractors with front 3 pt. and pto, and also on virtually all "conventional" tractors with rear 3 pt. and pto. It mounts front or rear without having to change anything on the shredder.

The new front-mounted, two-stage snow blower from Loftness is available in 3 models (6, 7 and 8 ft.) to fit tractors in the 40 to 125 hp range. It's equipped with reverse rotation, eliminating the need for extra gear boxes. The blower spout is adjustable hydraulically from the tractor seat.

For more information, contact: FARM SHOW Followup, Loftness Specialized Equipment, Hector, Minn. 55342 (ph 612 848-6266).



New Loftness 15-ft. shredder (top) is "beltless". Spout on two-stage snowblower (below) adjusts hydraulically.



Transport's two sets of dual wheels are close together and never leave the road.

CONVERTS FROM FIELD TO ROAD POSITION WITHOUT STOPPING

New "10 Second" Drill Transport

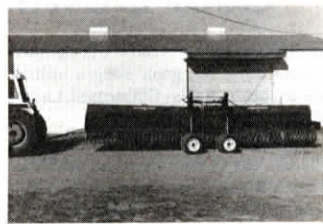
One of the neatest drill transports we've ever seen is the self-contained Quik-Port from Johnson Mfg., Kulm, N. Dak., that converts from field to road position in less than 10 seconds — without stopping.

"Without leaving the seat of the tractor, the operator simply hits a hydraulic lever to lift two 14 ft. drills, or three 10 footers, for full-width transport down the road.

Full width transport? That's right! The transport's two sets of dual wheels are positioned close together in the center of the drill. They never leave road. Half the drill's width is suspended in mid-air directly over the ditch, leaving plenty of room on the roadway for traffic to pass, and without the tractor operator having to veer off onto the shoulder or ditch when meeting cars.

"With the Quik-Port, there's no dipping or dragging of the drill's press wheels on roadways," notes Gerald Johnson, the inventor-manufacturer. "A system built into the transport automatically supports them 12 in. off the ground, eliminating the need to chain up press wheels by hand. Drills return to normal flexibility when released from transport to normal field position. In field position, the transport wheels are hydraulically drawn up with a clearance of about 10 in."

If you're running a field cultivator ahead of the drill, you can simply fold up the wings and, in less than 10 seconds, be ready



Drill easily converts to "endwise" position for transport through narrow gates, bridges.

to move down the road without having to unhitch any equipment.

If there are obstacles along the road, such as bridges, which prevent transporting the drill in the full-width field position, it only takes a few minutes to remove two bolts, turn the transport wheels one quarter turn, then replace the bolts and pull the drill down the road endways.

The Quik-Port transport mounts on most single, double or triple hitch drills of any width. One pair of duals (four 6:70 by 15 in. wheels) will carry about 30 ft. of drill width (two 14's, or three 10's, for example).

Cost of the transport ranges from \$3,160 (for two 14's) to \$4,000 (for three 10's).

For more information, contact: FARM SHOW Followup, Johnson Mfg., Kulm, N. Dak. 58456 (ph 701 647-2300).

LETS YOU KNOW IF YOU LEAVE IT OFF

Gas Cap Alarm

If you, or your hired help, have trouble remembering to put the gas cap back on after refueling, you'll like this new alarm designed to fit any vehicle or machine.

The alarm sensor simply mounts on the body of the vehicle or machine somewhere near the gas cap. You fasten a chain to the cap and to the sensor. When the cap is off for fueling, it hangs down, activating the sensor - a red alarm light that can be mounted in the cab. If you forget to replace the cap, the light (you can also set it up with a buzzer), will remind you.

Sells for between \$30 and \$40.

For more information, contact: FARM SHOW Followup, Air Design, Box 248, Scobey, Mont. 59263 (ph 406 487-2263).



Light or buzzer lets you know if you forget to replace gas cap.