

Roll-A-Way shutters mount outside the house.

Roll-Up Shutters Save Energy, Protect House

If you're looking for a good way to seal up windows in your house you'll be interested in roll-up shutters that have been used widely in Europe for years and are now on the market in the U.S.

Made from reinforced PVC plastic, the shutters roll up into a tight roll above the window. To lower them into position, you simply use a hand crank inside the house. The shutters ride in a track on either side of the window, tightly sealing the window against the elements as well as vandals and burglars.

"The slats fit into each other like tongue and groove siding. When they're all the way down, the window is completely sealed and the room is pitch black. But, if you crank them up a few inches, there are small holes that let in light and ventilation through the slats. This is important during storms or during the summer when you want to shade the room but still provide some light," says Dave Rectenwald, representative of Weatherite Systems, distributor of the new window system.

In some older houses with particu-

larly leaky windows, as much as 60% of the heat loss is out the windows. Putting the shutters down stops a majority of that loss. During summer the slats save on cooling costs and protect furniture and carpet from fading.

Roll-A-Way Shutters can be fitted to new construction or retrofitted to existing houses. They're particularly suited for patio doors and other wide openings since they can be constructed in lengths up to 20 ft. wide. They can be hand cranked or operated by electric motor. They could even be timed to go down automatically in the evening and come up in the morning. Because they're made from PVC they don't require any painting or maintenance.

A shutter for a 36-in. wide, 60-in. high window sells for \$375. A 6-ft. wide patio door shutter sells for \$675. Shutters are available in a variety of colors. The company is looking for dealers.

For more information, contact: FARM SHOW Followup, Weather Tite Systems, 2319 W. 1st. St., Duluth, Minn. 55806 (ph 218 722-2886).

Beard Trimmer

"We can't make them fast enough," says Fred Skeer, Wahl Clipper Corp., Sterling, Ill., manufacturer of a new beard clipper that's so easy to operate you can do it blindfolded.

The secret of the new trimmer is its unique five position locking trimming guide attachment. It snaps over the trimmer's blades to maintain an even, uniform cut in any of five length settings while it lifts and separates the whiskers with a combing action. The adjustable guide lets you cut each area of your beard to the exact desired length while it also makes it impossible to cut too deep.

The trimmer is also used for trimming sideburns and necklines.

Trimmer kit consists of trimmer itself, beard trimming guide attachment, mini grooming comb, styling comb, and detailed instructions. It sells for \$30.



For more information, contact: FARM SHOW Followup, Wahl Clipper Corp., 2900 Locust Street, Sterling, Ill. 61081 (ph 815 625-6525).

"POPS OUT" IF STRUCK BY A VEHICLE

New "Breakaway" Mailbox Standard

This new breakaway mailbox standard manufactured by Lift-A-Lite, Inc., Minot, N. Dak., is tailored-made for mailboxes that are frequently tipped over.

Your mailbox sits atop the 30 in. tall, 1½ in. dia. PVC pipe. The pipe is fitted to an 18 in. tall steel anchor, sunk into the ground, by a unique pop out coupling. If the mailbox is hit, the pipe simply releases from the coupling and falls over. To stand the mailbox back up, you simply reinsert the standard into the coupling.

The pipe has a 6 in. wide orange or white reflective tape band around the top so it's easily visible up to a half mile away. A mailbox standard, complete with the steel anchor and mounting brackets for conventional mailboxes, sells for \$19, plus shipping.

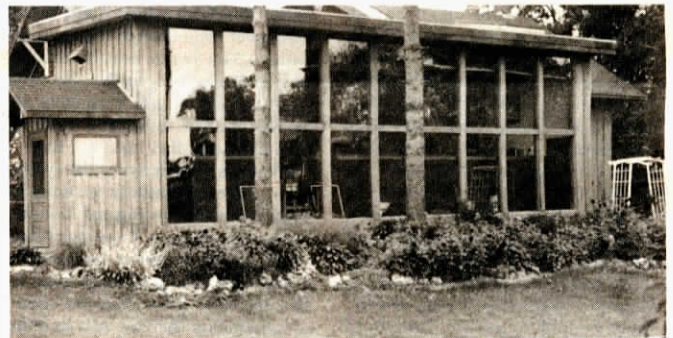
Lift-A-Lite also manufactures "obstruction markers" which are designed to mark the edges of driveways, washouts, etc. These markers also have the breakaway design and the



Unique coupler lets you easily reinsert standard into base.

reflective tape. They're available in 30 and 40 in. tall sizes. The 40 in. obstruction marker sells for \$14, plus shipping, and the 30 in. marker for \$13.

For more information, contact: FARM SHOW Followup, Lift-A-Lite, Inc., R.R. 6, Box 227, Minot, N. Dak. 58701 (ph 701 839-5643).



Solar greenhouse reduced firewood consumption 76%.

DO-IT-YOURSELF PROJECT

Add-On Greenhouse Heats Farm Home

"It lowered firewood consumption from 15 full cords of hardwood during the winter of 1978-79 to an average of 3½ cords for the past five heating seasons," says Joe Bacon, Spring Valley, Wis., who added a 38 by 14-ft. greenhouse to the south side of his 1928, 1,200 sq. ft. farm home.

Bacon farms and also sells cut-rate, surplus tempered glass that he buys in bulk from a large window company. His prices can be as much as 1/7th that of retail prices and he's promoting the use of the inexpensive glass for solar on farms.

"We'll help any farmer work out a design for a solar house or barn even if they have no intention of using our glass because we believe in the future

of solar energy," says Bacon, noting that he has also designed a solar-heated barn and he's building a grain dryer.

His added-on greenhouse measures 38 by 14 ft. and consists simply of a perpendicular glass wall that captures more of the sun's rays when it's low in the sky during winter but doesn't get too hot when the sun's higher in the sky during the summer. The tempered glass used in 8 times stronger than regular glass and is tinted to cut down on glare.

For more information, contact: FARM SHOW Followup, Joe Bacon, Rt. 1, Box 157, Spring Valley, Wisc. 54767 (ph 715 639-3762).