



The Supreme mixer can handle loose hay or straw as well as conventional square and round bales. It thoroughly processes a batch on-the-go in 7 to 10 min.

CUTS HAY INTO ADJUSTABLE-LENGTH PIECES

New Cutter-Mixer-Feeder For Total Mixed Rations

For the past 10 years, an Italian-built vertical cutter-mixer-feeder has led the revolution in total mixed rations throughout Europe. It has excelled in its ability to handle any quantity of roughage, and its ability to cut hay or straw into desired lengths up to 7 in.

That same machine now stands ready to show its stuff to North American dairy and beef producers. Called the Supreme, it has been introduced by Supreme International, of Wetaskiwin, Alb., Can.

"We're confident our proven new machine will single-handedly revolutionize TMR feeding in the U.S. and Canada," George Hunerfauth, president, told FARM SHOW. The Supreme, manufactured in Canada, will be shown at upcoming farm shows this summer and fall. An assembly plant in Texas is slated to be in production next January.

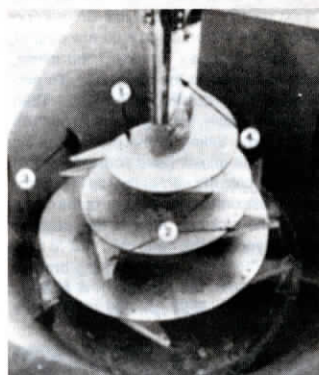
Here, according to Hunerfauth, are key features which, he says, make the Supreme vertical feed maker "the most efficient feed processing system in North America":

- One machine performs three operations—cutting, mixing and feeding.

- A vertical mixing corkscrew-style auger, fitted with bolt-on serrated knives, rotates at low speed for optimal mixing. It cuts loose or baled hay into adjustable (from 1 to 7 in.) length pieces. Hay is cut into uniform lengths—without being ground, pulverized or otherwise diminished in quality. There is no restriction on the percentage of long stem hay the machine will mix. Livestock producers can mix high concentrate rations with any desired roughage.

- Because it rotates slowly, the power requirement of the Supreme is about 40% less than for a comparable size tub grinder.

- Rugged construction, coupled with slow rotation of the vertical auger and relatively



Vertical corkscrew-style auger, fitted with bolt-on serrated knives, rotates at low speed for optimal mixing. 1. Vertical screw 2. Serrated blades 3. Hydraulic gate blades are adjustable for varying length of cut 4. Anti-wrap blade.

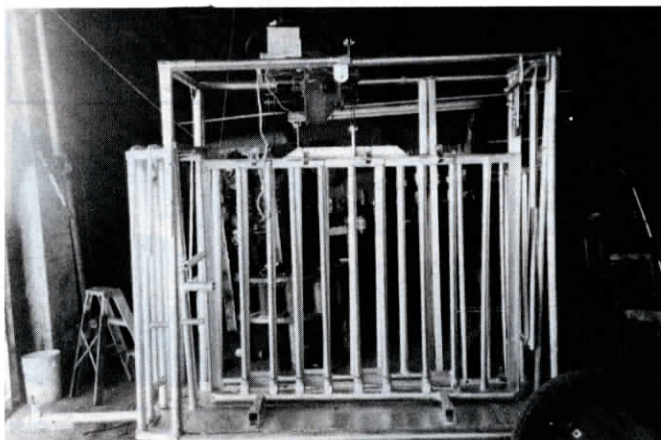
few moving parts, add up to low maintenance.

- Because it cuts rather than grinds the hay, it can handle a wide range of hay quality— from partially frozen and rotted hay, to tough-to-process hay or grass.

- The Supreme handles loose hay or straw, conventional bales (up to 16 per batch), big round bales and big square bales. It thoroughly processes batches "on the go" in 7 to 10 minutes.

Heading the line of eight Supreme models tailor-made for the North American market is the 700 which has 700 cu. ft. of capacity and requires 110 hp. The smallest model is rated at 210 cu. ft. and requires 50 hp. Retail prices range from \$30,000 to \$50,000 (U.S.).

For more information, contact: FARM SHOW Followup, Supreme International, P.O. Box 6450, Wetaskiwin, Alb., Canada T9A 2G2 (ph 403 352-6095, Or 6061).



Squeeze mechanism consists of an auto starter motor, flywheel, clutch, and transmission pilot shaft.

Electric Squeeze Chute

"Lets even a child handle the largest cattle," says Keith Lamb, Gruver, Tex., about his first-of-its-kind electric squeeze chute that eliminates the effort needed to run manual chutes and costs much less than all-hydraulic chutes.

Lamb got the idea for his chute in an effort to reduce the labor required to work cattle. Many of the "hired hands" available in his area are women and teenagers who often have trouble operating manual chutes. "There's also a real hazard of the squeeze bar shaking loose and hitting people. It happens all the time," he says.

So Lamb replaced the manual lever with a positive ratchet driven by an automotive starter motor. An ordinary 12-volt battery provides power so the chute is totally portable. "To squeeze the chute you just push a button. If the battery wears down, or if you don't want to put a battery on the chute, you can just hook up to your pickup or tractor battery with jumper cables," he says.

The squeeze mechanism consists of an auto starter motor, flywheel, clutch and transmission pilot shaft. A single touch of a button rotates the shaft 60 degrees. A safety slip clutch stops the rotation on big animals once they're squeezed tight enough.

To "unsqueeze" the chute you just pull a lever that releases the ratchet dog.

"Hydraulic chutes work well but require 220-volt power to operate so you can't just take them anywhere. As far as I know, there's not another electric chute on the market like this one," says Lamb, whose prototype chute mounts on a 2-wheel trailer.

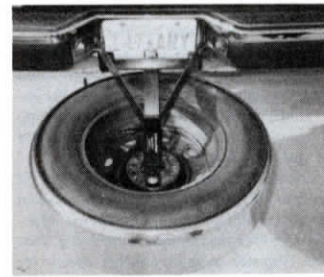
The drive system is designed so that if power ever failed, the chute can still be operated manually. Lamb has also come up with a new rear gate that's designed to replace existing sliding gates that raise up and down by rope. His new gate is split down the middle. A single lever pivots both sides of the gate outward, making it much easier to open and shut.

Lamb says his electric power kit can be adapted to most existing chutes. He converts chutes for about \$600 using salvaged parts. "That's a lot cheaper than the \$5,000 to \$10,000 you'd spend for a hydraulic chute," he says. He plans to develop a do-it-yourself bolt-on kit. He'd like to sell the powered chute idea, on which he has patent pending, to a manufacturer.

For more information, contact: FARM SHOW Followup, Keith Lamb, Box 340, Gruver, Tex. 79040 (ph 806 733-2893).



Bracket can be adjusted to fit any size tire. Bolts securely to bumper.



"Fold-Down" Tire Carrier

This new "fold-down" spare tire carrier brackets onto the step bumper of your pickup and secures the tire in a vertical position behind the tailgate where it's easy to get at, according to Brighterway Products, Rochester, Minn.

"Most other spare tire carriers mount under the pickup bed where the tire is hard to reach and often difficult to remove because of rust and dirt buildup," says Ervin Matzke, owner. "Our Port-A-Spare tire carrier eliminates those problems without interfering with visibility of the license plate or use of the

hitch. It folds down out of the way whenever you want to use the tailgate."

The bracket can be adjusted to fit any size tire by repositioning a pin. Two models are available to fit small or large pickups as well as trailers and most other vehicles, foreign and domestic, equipped with step-type bumpers. Both models sell for \$79.95.

Dealer inquiries welcome.

For more information, contact: FARM SHOW Followup, Brighterway Products, Box 7267, Rochester, Minn. 55903 (ph 507 289-0482).