



## Giant-Size Snow Blower

"As far as I know, it's one of the biggest snowblowers ever made for farm use," says Lowell Flitter about the giant-size blower he built for farmer and custom snow blower Wayne Hohenstein, of Garden City, Minn.

Mounted on a 165 hp hydrostatic New Idea Uni-System power unit, it stands 14 ft. high and is 10.5 ft. wide. The six-bladed blower behind the twin augers is 42 in. in dia. The hydraulically-operated spout turns 360° and can be folded in half for easy maneuvering in and out of storage.

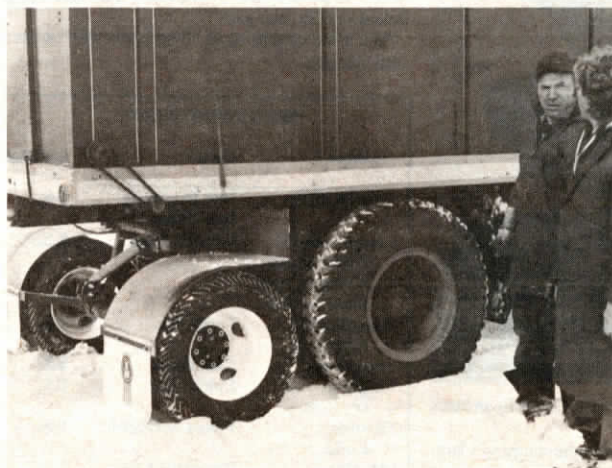
Previously, Hohenstein had done custom snow blowing with a 105 hp Uni-System and a 9 ft. wide New Idea blower, the company's largest. "My new, larger Uni-System was wider than the 9 ft. blower and its wheels

were always climbing on top of the snow. We had the new wider blower built to solve the problem."

The new blower not only is bigger and wider than the old one, but also is more durable, says Hohenstein. For example, the main drive shaft is 2-7/16 in. in dia. A reinforcing ring covers the blades' edges. And the 22 in. augers are constructed of sturdy 3/8 in. flanging.

Flitter says he'll custom-build snow blowers or similar of smaller size for interested farmers. He notes that a smaller, rear-mounted version of Hohenstein's blower could be custom-made for a conventional tractor.

Contact: FARM SHOW Followup, Lowell Flitter, Lewisville, Minn. 56060 (ph 507 435-2102).



## Grain Truck Tag Axle

"This truck was just 8 years old and had only 25,000 miles on it so we didn't want to sell it. But we could never carry a full load because it would exceed legal limits. We decided to put a tag axle on it," says Ken Wise, Rockyford, Alberta., about his 4-ton GMC 7000 grain truck.

Commercial models cost as much as \$5,200 and would have required lengthening the frame, so Wise built his own. He used a 1-ton Chevrolet axle. The axle shackles to the truck frame with 8 large U-bolts. The 16-in. wheels on each side flex independently on 5,000 lb. springs. A pair of

heavy-duty shocks provide added suspension. The add-on axle's raised by a hydraulic cylinder that's plumbed into the dump hoist. There's 4 in. of ground clearance beneath the tires when the axle is raised.

"It solved our overload problem on roads and qualifies as a full legal tandem. I had to use smaller wheels so that I could still dump the box. It works great," says Wise.

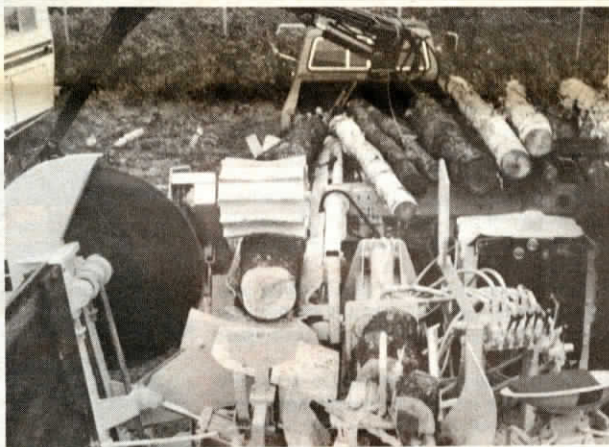
Contact: FARM SHOW Followup, Ken Wise, Box 219, Rockyford, Alberta Canada T0J 2R0 (ph 306 533-2254).

**FARM  
SHOW**

**"Made  
it  
Myself"**

Some of the best new products we hear about are "made it myself" innovations born in farmers' workshops. If you've got a new invention or favorite gadget you're proud of, we'd like to hear about it. Send along a photo or two, and a description of what it is and how it works. Is it being manufactured commercially? If so, where can interested farmers buy it? Are you looking for manufacturers, dealers or distributors? (Send to: FARM SHOW, Box 1029, Lakeville, MN 55044).

*Harold M. Johnson, Editorial Director*



## "One Man" Wood Processor

"One man working alone can process 1.5 cords of wood per hour with this machine," says George "Ole" Demars, Jr., designer and builder of what he calls the "OK Wood Processor."

"It handles logs up to 20 in. in dia. and in lengths up to 60 ft. or more. The log loader, a Lemco 5000, can load from either side of the machine and easily handles tree-length logs. The loading deck will handle up to 3/4 of a cord at a time.

"The trough conveyor is double chain drive with 8 in. crossbars. The arbor has 1-15/16 in. bearings and takes a 44 in. saw that makes a 19 in. cut. The bumper plate is adjustable from 16 to 28 in. and automatically retracts 2 in. as the saw is moving through the wood to eliminate any pinching.

"Logs are split with a 4.5 by 30 in. cylinder which has a cycle time of 5.2 seconds. Equipped with a four-way

knife, it can split two blocks at a time.

"The splitter assembly moves back and forth hydraulically to line up with the bumper plate for different lengths of wood.

"This processor has a tandem commercial pump (30 gal.) for the splitter and a 15 gal. pump for the conveyor, deck, and loader. Power is provided by a Deere 4 cyl., 40 hp gas engine. Seat and controls are located close to the splitter so the operator can handle any logs that fall crooked into the splitter.

"Entire processor is easily moved from one location to another with a pickup."

George welcomes inquiries from anyone interested in building a similar machine, or having one custom built.

Contact: George Demars, Jr., Rt. 2, Box 179, Bovey, Minn. 55709 (ph 218 245-1059).