

Photos courtesy Country Guide

Bales can be dropped off to either side, depending on placement of cable.

A SINGLE STEEL CABLE DUMPS ALL 7 BALES AT ONCE

“Made-It-Myself” Round Bale Hauler

Hauling big loads of round bales is both easy and cheap for Canadian farmer Ed Jaenen who built his own uncomplicated round bale hauler from a pair of big metal pipes, a steel cable and other miscellaneous parts.

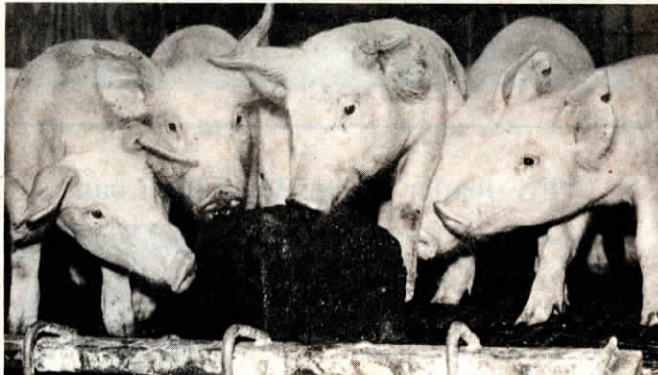
Jaenen needed a bale hauling trailer that would transport over narrow country roads so he had to develop a simple way of unloading. He also felt he could not justify the cost of a commercial bale trailer.

Two 12-in. dia., 40-ft. long steel pipes, salvaged from a local mining operation (telephone poles would work just as well), carry up to seven 1,500 lb. bales. The pipes mount on a triple axle, 6-wheeled chassis that was built from junked balers. Two large U-bolts anchor each pipe to the chassis' 4-

in. channel iron frame.

Key to operation of the unique bale hauler is a steel cable that runs lengthwise down the center of the two pipes. The cable is anchored to a heavy steel plate at the rear of the bale hauler and is pulled tight by a cylinder-controlled pivot arm at the front of the unit. As the cable is pulled tight, it lifts up under the bales and dumps them off to the side. Depending on initial placement of the cable, bales can be dumped off to either side of the hauler.

For more information, contact: FARM SHOW Followup, Ed Jaenen, General Deliver, Fairlight, Sask. S0G 1M0 Canada (ph 306 646-4926).



Pacifier blocks are laced with a distinctive aroma to attract pigs.

PIGS CHEW IT AS THEY PLAY WITH IT

Edible “Piggy Pacifier”

Latest new way to help prevent tail biting, ear chewing and other stress problems with hogs is a new edible “Piggy Pacifier” from the Double LL Co., Garnavillo, Iowa.

Individual pacifiers are made in 6 by 7 by 5 in. blocks laced with a distinctive aroma to attract pigs, plus niacin, glucose, vitamin B12, citric acid and 20 other different vitamins and minerals.

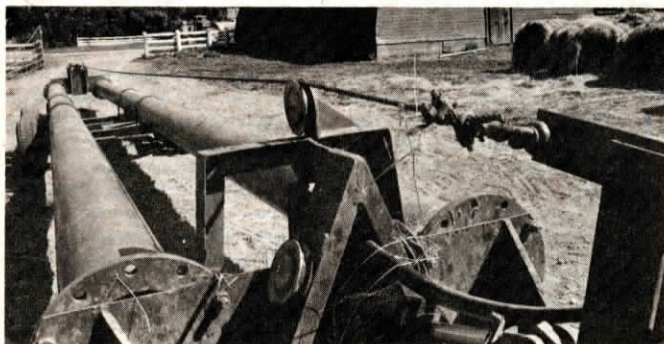
“Hog producers have tried injection, bowling balls, old tires and dozens of other ways to help reduce tail biting and other destructive behaviour resulting from stress or boredom. We’ve taken a totally different

approach with our new pacifier which provides nutritional value and stimulates appetites while keeping bored pigs entertained,” notes Norb Borchering, manufacturer.

One block in a pen of 10 newly-weaned pigs will last about a week. “The pacifier turns pigs noses red. So, if you spot one without a red nose, you know he’s not eating and needs attention,” says Borchering.

A case of 10 blocks sells for \$49.95.

For more information, contact: FARM SHOW Followup, Double LL, Box 128, Garnavillo, Iowa 52049 (ph 1-800 553-4162; In Iowa, call -1-800 632-5938).



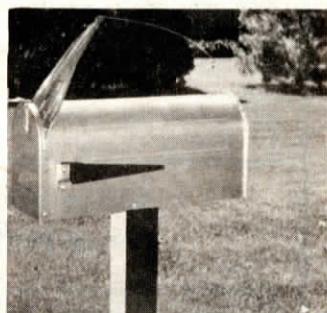
A hydraulically-controlled pivot arm at rear of tractor pulls cable tight to dump entire load at once.

Low-Cost Mailbox Flag

Here’s a new low-cost flag that lets you know from your house or car window when the mail has arrived. It’s spring loaded and attaches to the back of the mailbox in seconds without requiring any screws, bolts or tools. When the mail man or lady opens the door to insert the mail, the flag flies straight up. When you pick up the mail, you “load” the flag so its ready to signal the next mail delivery.

Sells for \$4.95. Dealer inquiries welcome.

Contact: FARM SHOW Followup, Walter McCray, 7049 Big Creek Pkwy., Middleburg Hts., Ohio 44130 (ph 216 845-9851).



When mailbox door is opened, flag springs backward and stands straight up.



Loader and electric lift can also be adapted to most garden tractors.

Loader Bucket For ATV’s

A “first ever” loader bucket for All-Terrain Vehicles, introduced by Westendorf Mfg., Onawa, Iowa, lets you scoop, scrape, dig, dump, level, backfill and haul loads up to 250 lbs. with ease.

Called the Auto-Dump, it’s raised and lowered by Westendorf’s 3 pt. electric lift power unit that mounts on the front of most makes of 4-wheel ATV’s. A subframe, fastened to the bottom of the ATV, holds the 3 pt. electric lift in place. At the flip of a switch, it lifts the 42 in. wide bucket to a dump height of 13 ft., a dump angle of 40°, and a carrying level of 8-1/2 in. When tilted and locked in dump position, it can be used like a blade. “But it does a lot more than a blade can do,” Ron Truitt, sales manager, points out. “You can push snow until it goes over the top of the bucket, or until the ATV breaks traction. When this happens, you just raise up the bucket, back up, dump, and continue on.”

By pulling a pin on a Quick Tach bracket, and by disconnecting an electrical connector, you can remove the 3 pt. power unit and bucket. Or, by flipping a pin, you can remove only the bucket and add a different attachment.”

Optional attachments include a 48 in. blade which can be angled 30° in either direction to push material to the side; a 3.5 ft. boom with a chain on the end of it for lifting and carrying odd-shaped objects; a fork lift for moving bales, sacks, crates, etc.; and a grass and leaf bucket.

The Auto-Dump and electric lift to raise and lower it can be front or rear mounted to most garden tractors.

Cost of the system with a 42 in. bucket is \$759.

For more information, contact: FARM SHOW Followup, Westendorf Mfg., Co., P.O. Box 29, Onawa, Iowa 51040 (ph 712 423-2762).