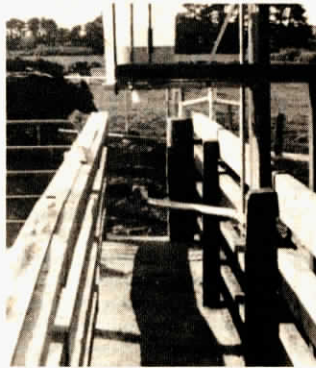


## Mineral Feeder Squirts Cow's Back

You've never seen anything like this new mineral feeder that squirts a glob of mineral paste directly onto the backs of cattle.

"As soon as the animal feels the paste on its back, it licks it off. There's absolutely no waste and there's no way they can avoid it," says Brian Brown, inventor of the new feeder.

Brown came up with his unique method of application several years ago when he first developed a new mineral paste. He originally applied it by hand through a squeeze applicator gun. His new invention goes one step further with the development of an electric eye-activated canister filled with mineral paste that squirts onto the backs of cows as they go through a chute which can be placed anywhere the animals regularly travel. As they walk through the chute, they break through a beam of light, activating the automatic applicator which squirts a pre-set amount on each animal. For dairy cattle, Brown recommends mounting the unit at the entrance to the parlor. He has one unit mounted above a rotary milking par-



lor so that, as the cows rotate during milking, they all get a treatment.

Brown says all types of minerals can be fed through the system but that it's particularly popular for use with magnesium paste he has developed. "The animals soon get into the habit and it becomes an automatic response to reach back onto their back for the nourishment," he notes.

Contact: FARM SHOW Followup, Brian Brown, Wonder D.C.L., P.O. Box 176, Eltham, New Zealand.

## Powered Culti-Disc

Gallagher Engineering introduced a new pto-powered farm disc at the National New Zealand Fielddays.

Available in models with 4 to 8 blades, the disc cuts to a maximum depth of 10 in., causing less compaction and chewing up the soil more than conventional discs, according to the company. Disc diameter is 24 in., and cutting width of the 8-blade model is 79 in. The 3-pt. mounted culti-disc spins its powered discs 3 times as fast as tractor ground speed, providing forward propulsion for the tractor that reportedly cuts fuel needs by as much as 50%.

The 8-row model sells for about \$3,500. The company is working on a larger 14-disc model and hopes to have it available soon in the U.S. and Canada.



Contact: FARM SHOW Followup, Gallagher Engineering Ltd., Private Bag, Hamilton, N.Z. (ph 071 437-189).

## Mother's Sheep Cradle

A simple but effective way to force ewes to mother orphan lambs was introduced at the Fielddays by Anlift Marketing, Matamata, New Zealand, manufacturer of the Anlift cowlifter that's become popular in the U.S. and Canada for handling down cows.

The new sheep cradle consists of a lightweight tubular metal frame with a canvas cradle across the center. The animal is lifted into the cradle, which is then strapped down over its back. Held at a level where its feet just touch the ground, the animal can't move away when presented with a nursing lamb. When not in use, the cradle folds up for easy storage. Sells for about \$40.

Contact: FARM SHOW Followup,



Anlift Marketing, Matamata Motor Trimmers, Broadway, Matamata, New Zealand (ph 818 8721).

## Tree Root Saw Is First-Of-Its-Kind

One of the most unusual new products at the recent Fielddays in Hamilton, New Zealand was a huge root pruning saw that reaches down to depths of 36 in. to keep windbreaks, and viny crops with heavy root structures, from spreading. The huge 8-ft. dia. cutting disc mounts on the 3-pt. of a 40 hp. or larger tractor.

"It's designed to actually saw through tree roots, cutting a narrow 1½-in. trench through the ground," Nelson Benton, inventor, told FARM SHOW. Hydraulically powered off the tractor pto by a hydraulic motor mounted at the center of the disc, the saw will cut through up to 800 yards per hour, depending on soil type, root density and size. Double-acting hydraulics let the operator reverse the disc, when needed.



In addition to root pruning, the root saw can also be used to lay cable. It sells for about \$3,000.

Contact: FARM SHOW Followup, Nelson Benton, Zeus Holdings, Ltd., 32 Eaton Crescent, Tauranga, New Zealand (ph 65-297).

## "Soil Revitalizer" Boosts Pasture Profits

"It works like a mechanical worm," says Hank Klinkhamer, manufacturer of a new-style soil renovator that punches thousands of small holes in pastures to trap water and prevent fertilizer run-off. "It boosts yields an average of 34% while using just half as much fertilizer.

"I've seen lakes and small ponds dry up when the pasture around them is treated with our machine because the runoff is so drastically reduced," says Klinkhamer, noting that his spiked drum "Soil Revitalizer" can be pulled at speeds of 7 to 10 mph, covering 60 to 70 acres per hour.

Width of the spiked roller is 8 ft. It weighs 1,650 lbs. empty, and 3,300 lbs. when full of water. It's equipped with 88 spikes and requires at least a 40 hp. tractor to operate.

"Other pasture renovators slice through the soil, compressing it to either side or downward. This machine creates more than 200,000 little reservoirs that capture rainfall and fertilizer runoff that might normally be lost from compacted soils. It also aerates the soil, promot-



ing greater root growth and aiding the growth of bacteria in the soil which cannot grow without air," says Klinkhamer.

"After you've treated a piece of ground it's covered with little cores of earth that look like soil samples. The centrifugal force of the turning drum throws the cores out, keeping the spikes empty and clean," says Klinkhamer.

The new pasture renovator sells for about \$1,500.

Contact: FARM SHOW Followup, Hank Klinkhamer, N. Z. Soil Aeration Ltd., P.O. Box 10372, Te Rapa, Hamilton, New Zealand (ph 071 492-059).

## Hand-Operated Load Lifter For Pickups

"You use your body weight to gain a 2 to 1 leverage — instead of buying expensive hydraulics," says Peter French, inventor of a hand-operated pickup load lifter. The unit mounts at the rear corner of the pickup and uses operator muscle to lift all sorts of loads.

Built from tube steel, the unit has a pair of lifting forks. It'll handle weights up to 220 lbs. Folds flat when not in use. Sells for about \$75.

Contact: FARM SHOW Followup, Te Pari Products Ltd., No. 9 Rd., Feilding, New Zealand (ph Cheltenham 707).

