

POSTMAN PUTS LETTERS IN SLOT AND NEWSPAPERS, PACKAGES ABOVE

"Lock Box" Mailbox

You can seal your mail away from "grab and run" thieves with the new "Lock Box" mailbox invented by an Ohio inventor.

Lock Box is a standard-size mailbox that contains a locking box inside. The postman slips letters through a slot in the locked box, which takes up about 35% of the available space, and puts newspapers, packages and magazines in the larger space above.

"You can put a lock on any mailbox but the mailman doesn't have to unlock this box. If the locked box fills up for any reason, the larger space above is still available for mail," says Fred Phillippi, inventor.

Phillippi simply takes a conventional galvanized mailbox and fits it with the locked box made from 1/8-in. aluminum. It unlocks by key and comes with a decal reminding your carrier to use the slot, which is 7 1/4 in. wide and 1 in. high with an inner lip to make it impossible to "fish" mail out through the slot.

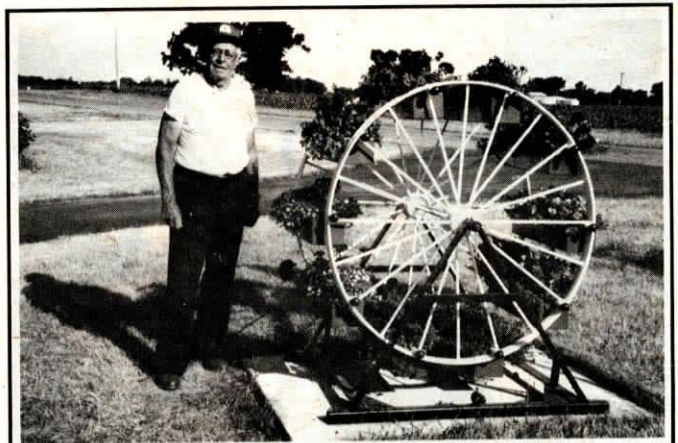
Lock Box mailbox (8 by 9 by 21 in.) sells for \$76.60. A larger size (11 by 13 by 23 in.) sells for \$87.15. If your mailbox is in good condition, you can buy just the locking insert and install it yourself. The smaller size (for an 8 by 9-in. mailbox) sells for \$53



Mailman slips letters into slot in lock box and puts magazines and packages above.

and the large size (for an 11 by 13-in. box) sells for \$62. All prices include shipping.

For more information, contact: FARM SHOW Followup, Lock Box, P.O. Box 415, Sugar Creek, Ohio 44681 (ph 216 852-4111 or 364-6193).

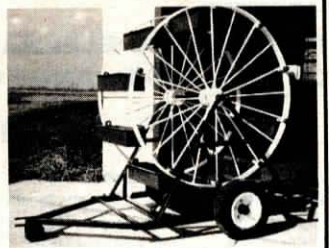


"Ferris Flower Wheel"

Driving along Highway 138 three miles south of Stoughton, Wis., you can't miss one of the most unique flower displays found anywhere - a colorful "flower wheel", resembling a mini ferris wheel, in the front yard of the Sanford Kleven farm.

Kleven built the "flower wheel", whose 10 metal boxes are brim full of flowers in virtually every color, as a showpiece for the flowers he raises as a hobby. "Lots of people stop to look at the flower wheel, and some even ask me if I'll build them one, but so far I've only made one unit for myself," says Kleven.

To build the flower wheel, Kleven took two big 5-ft. dia. wheels from an old hay rake and painted them white. He mounted the wheels on a 3-ft. axle made from metal tubing. Next, he removed the spokes from each wheel and replaced them with twenty 1/2 in. dia. pipes. He welded the pipes to the wheel rims and, at the end of every other pipe, he attached a 1-in. long "stub". Each "stub" extends through a 1/2-in. dia. washer welded to the outside top edge of each metal flower box. Kleven bought the 10 boxes at a local surplus store. Each measures 22 in. long, 6 in. wide and 6 in. deep. As Kleven turns the wheels by hand, the washers swing freely around the stubs

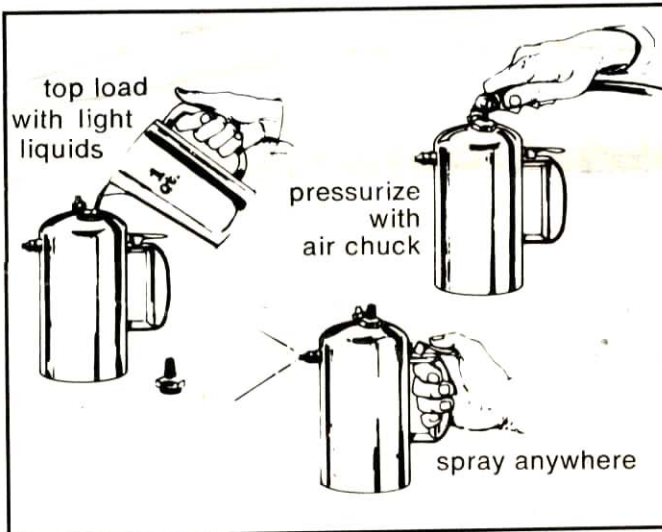


so the boxes remain upright as the wheels rotate.

The next step was to use channel iron to build a frame around the flower wheels. The frame can be equipped with small tires and a removable tongue which allows Kleven to haul the "flower wheel" inside his workshop during the winter so he can start flowers early.

Kleven plans to pull the flower wheel in parades. He pulls it with a garden tractor. A belt wrapped around the trailer's axle slowly turns the flower wheel.

Contact: FARM SHOW Followup, Sanford Kleven, 595 Bass Lake Road, Stoughton, Wis. 53589 (ph 608 873-7621).



REFILL IT WITH LIQUIDS AND USE IT OVER AND OVER

Make Your Own Aerosols With "Sure Shot" Sprayer

You can custom make your own aerosols with the reusable "Sure Shot" sprayer from Milwaukee Sprayer Mfg. Co.

You load the Sure Shot with a herbicide, insecticide or other liquid, then pressurize it with up to 80 to 120 lbs. of air pressure. One quart of liquid fills the unit 3/4 full. The top 1/4 is air which, when compressed, pushes down on the liquid, forcing it through a mechanical breakup nozzle.

Sprayable products the Sure Shot can handle include insecticides, herbicides, cleaning fluids, degreasers, light oils and

disinfectants. The container isn't recommended for spraying paint.

Model 2000, with 1 qt. capacity, comes with two interchangeable spray jets — general purpose mist, and pin stream. Retailers for \$48.21. Optional nozzle extensions (3, 6 or 12 in. long) let you get into hard-to-reach places. The extensions sell for \$3.50, \$3.96 and \$4.70, respectively.

For more information, contact: FARM SHOW Followup, Milwaukee Sprayer Co., 5635 West Douglas Ave., Milwaukee, Wis. 53218 (ph 414 527-0330).

JUST ADD WATER

All Purpose Cleaner You Mix Up Yourself

"When you buy commercial cleaning fluids, most of what you buy is water," says Bob Keck, Cincinnati, Ohio, who sells his own All Purpose Cleaner in powder form. You mix it up yourself by adding water.

"We think it's the best cleaning product on the market. You can use it for cleaning everything from floors to carpets, windows, mirrors, vinyl, leather, dishes, laundry, livestock, and just about anything else around the house or barn. I've used it myself for the past 20 years, along with many of my family and friends, and just recently began offering it to farmers. Response has been tremendous because of the convenience and the savings. Liquid cleaners available commercially are 95% or more water. Why pay for water when it's free?" says Keck.

The cleaner is available in 5, 10, 25 and 50 gal. packets. Keck says farmers often mix up a 55 gal. drum full of cleaner and fit the drum with a small hand pump so that

family members can fill containers with cleaner as needed for the house or barn. He notes that even when mixed with water, the cleaner is still in concentrate form. "A little goes a long way. When washing windows, for example, you only need a few tablespoons of liquid cleaner per gallon of water," says Keck.

A 5-lb. package of Keck's cleaning powder mixes into 50 gal. of concentrated cleaner. At \$49.98 per package the cost per gallon figures out to about \$1. A 5-gal. mix kit sells for \$4.98. For \$1, Keck will send any FARM SHOW reader a 16 oz. sample bottle of the product already mixed. The \$1 sample charge is deductible from future orders.

For more information, contact: FARM SHOW Followup, Bob Keck, 11525 Colerain Ave., Cincinnati, Ohio 45247 (ph 513 385-2396).