



Once caught, the animal is held in place by the choke chain collar but isn't harmed.

CATCHES THEM LIVE BY WRAPPING A CHOKE CHAIN AROUND THEIR NECK

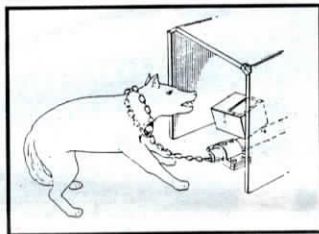
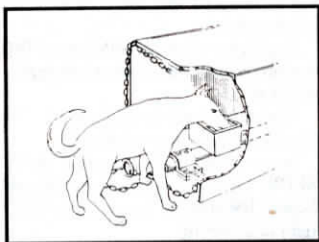
"No Harm" Trap For Coyotes, Wild Dogs

Farmers and ranchers who have problems with coyotes and wild dogs will love this new first-of-its-kind live trap that catches large animals live and holds them without harm.

Inventor Robert Pritchford, Jr., says he's had tremendous interest from all over the world for his new trap, especially since the most effective poisons for coyotes and other animals have been banned in many countries. "Most live traps are box traps. Coyotes and many wild dogs are too smart to get caught in them. Leg hold traps are considered cruel by many animal rights advocates and may be banned eventually. This is not only the most effective trap ever made, it's also the most humane."

The trap consists of a long spring-loaded cylinder that's anchored to the ground with two screw-type anchors. The piston on the cylinder connects to a chain fitted with a choke collar. A garbage can-type cover goes over the trap. A feed dish, which triggers the trap, mounts on top of the cylinder.

The cylinder is cocked and the feed tray set into place. When the cylinder is cocked, the entire length of the chain is exposed and it sticks to magnets around the opening of the trap. The bottom of the loop is laid loosely along the sides of the cylinder. When the animal reaches in to eat out of the feed tray, movement of the tray releases the cylinder which instantly tightens the chain around the animal's neck. When it tries to pull away, the flexible noose tightens its grip. When the animal eases up, the chain loosens.



When the dog or coyote eats out of the feed tray, it triggers the cylinder which retracts, pulling the chain tight around the animal's neck.

"Part of what makes this trap so effective is the use of a trash can to cover it," Pritchford told FARM SHOW. "An animal will put his head in with no fear and, because of this, they do not recognize the no-harm animal restrainer as a trap. Once caught, it's virtually impossible for animal to be hurt."

The "No Harm" trap sells for \$149.95.

For more information, contact: FARM SHOW Followup, Robert L. Pritchford, Jr., P.O. Box 61450 (ph 213 608-1715).

LETS YOU ADJUST SHIELD HEIGHT TO DIFFERENT SIZE CROPS

New Lift System For Cultivator Shields

A new lift system for cultivators lets you raise and lower all cultivator shields at once from the tractor seat.

Inventor-manufacturer Mark DeWitz, Good Thunder, Minn., says he came up with the system in order to adjust shield height to different sized crops on the go. "It lets you keep speed up and still get maximum weed control. The lift system also saves time when moving from one field to another or from one crop to another. Another advantage is that when shields plug up from excess crop residue, you can raise them from the cab and never have to climb down off the tractor."

The fully adjustable lift system attaches to any toolbar by drilling and tapping 3/8-in. dia. holes in the top side of the bar to mount the horizontal 2-in. support pipe. Each shield has a separate lift arm that rotates with the 2-in. pipe. The lift arms move in and out by adjusting set bolts and the length of chain to each shield can be adjusted. A single hydraulic cylinder controls the lift.

Sells for \$179 for an 8-row cultivator.

For more information, contact: FARM SHOW Followup, Mark DeWitz, Box 242, Good Thunder, Minn. 56037 (ph 507 278-3665).

REPAIR BROKEN HOSES RIGHT ON THE MACHINE WITHOUT REMOVING THE HOSE

New "Do-It-Yourself" Hose End Crimper

A new "do-it-yourself" hose end crimper from Clever-Tech, Inc., Jesup, Iowa, allows you to repair broken hydraulic hoses in the field without removing the hose or buying special hose ends.

The "Clever Crimp" was invented by Robert Rottinghaus, a farmer-engineer from Jesup, Iowa. "It lets you repair hoses right on the machine in less than ten minutes and the quality of repair is equal to any hose end repair shop," says Rottinghaus, who built the crimper out of frustration with hose repairs on his own farm. "If you break down at 5 p.m. on a Saturday afternoon and all the repair shops in town are closed, you're finished working until Monday. You'll pay for our machine the first couple times you use it."

"Other hose end crimpers require a vise and you must remove the entire hose, which is often a time-consuming job. Also, you must use the company's own hose end. Clever Crimp works on all standard brands of single piece hose ends, which are readily available at farm supply stores and implement dealerships. You can use any hose end as long as it's compatible with the hose on your machine. We furnish a caliper so you can check the crimping diameter of the existing hose end and duplicate it when you install a new hose end. All hose assemblies have been laboratory tested."

The do-it-yourself kit includes hose crimper, hose end holder, three single piece hose ends, hacksaw, 3-in. "C" clamp, diagonal pliers, 1/2-in. wrench, 4-in. caliper, roll of teflon tape, and instructions.

To use, clamp the hose end holder to the frame of the machine anywhere close to the broken hose. Clamp the end of the broken hose in the hose end holder and cut it with a hacksaw. Snip off frayed wire with diagonal pliers. Select a gauge block to match the size and type of hose you're crimping. Unscrew the tee handle from the threaded pivot and place the gauge block on the threaded tee handle. Place the pin in the hole on the ink bar marked bottom. Place the



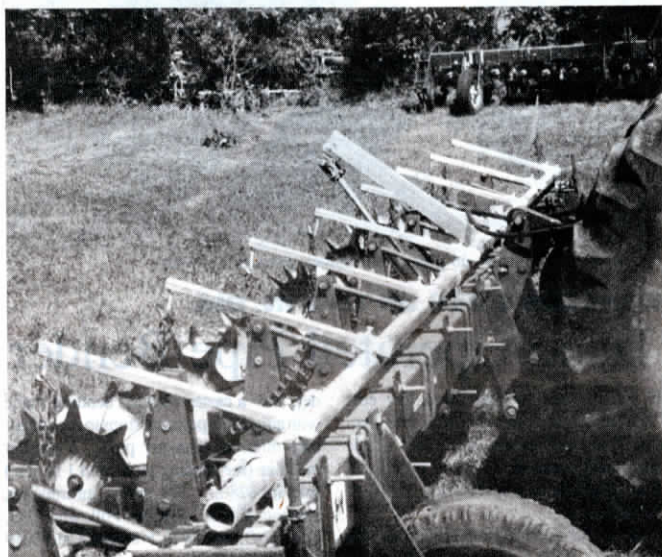
New hose end crimper can be mounted anywhere using C-clamps.

crimper on the hose end and hold the hose next to the hose end and make a mark. Push the hose into the hose end up to the mark or until it bottoms out. Rotate the crimper clockwise and counter clockwise around the hose end until the gauge block is tight, then tighten the tee handle a half turn.

The model 1434 crimper crimps hoses ranging from 1/4 to 3/4 in. in dia. Dealer-distributor inquiries welcome.

Sells for under \$250. Other kits for different size hose will be available soon.

For more information, contact: FARM SHOW Followup, Clever Tech, Inc., 4121 S. Canfield Rd., Jesup, Iowa 50648 (ph 319 827-1311).



A single lift cylinder raises all the shields, which are suspended by chains, at once.