



Curbing, partitions and inside wall are all built into the independent stalls which you simply set inside empty barn shell.

NEW SYSTEMS ARE "GREAT FOR UPDATING OLDER BARN"

New Free Stalls For Dairy Cows

"They're great for new systems or for updating older barns," says Winston Kilburn, dairy farm manager and designer-manufacturer of independent, solid-frame construction free stalls that require no concrete curbs, pipes, wall brackets or inside walls. "All that's required is an empty barn shell. Curbing and everything else you need is built right into the free-standing free stalls for dairy and other livestock," explains Kilburn.

Stalls for mature cows come in 5-stall sections. You simply set sections end to end and attach them with a single bolt to hold alignment. If there's no floor in the barn, they can be placed right on bare ground, leaving you only the center alleyway to concrete. Since they're portable and not attached to a wall or floor, they're not taxed as real estate. Tenant farmers who put them in can take them with if they move to another farm, notes Kilburn.

A standard 5-stall section is 7 ft. wide and 20 ft. long, providing a 4 by 7 stall for each cow. There's an 8 in. steel curb front and back (other curb sizes optional) to contain bedding. The lower 2 by 10-in. planks on both sides of each stall, and the lower plank up front, are pressure-treated to

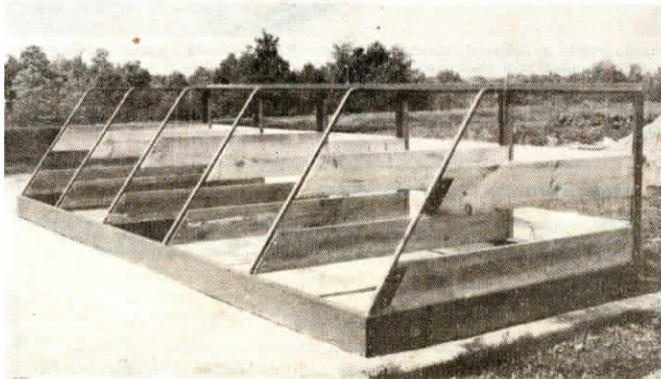
resist manure acids and moisture. The upper planks are untreated.

Vertical steel supports in front (45 in. long) are made of 3 by 3 by 3/4 in. thick angle iron. Stall divider framework is made of solid 1 1/4 round steel. Welded-on steel brackets for attaching planking are 4 in. wide to help ensure that planks can't be pushed loose, explains Kilburn. He adds that, "The slanted rear design of the stalls helps prevent injury to cows when they back out. A cow backing out instinctively starts to turn when her feet are in the alleyway. Slanting the supports gives her ample room to come and go without coming in contact with partitions."

Available in a wide variety of sizes to fit various size dairy animals. Can also be adapted for use with horses and other livestock.

Kilburn sells the stalls broken down for do-it-yourself assembly for right at \$700 (fob) for a 5-stall section, including planking. The cost for custom-installed stalls is right at \$900 (fob) per section.

For more information, contact: FARM SHOW Followup, Winston Kilburn, 150 Burt Rd., Gansevoort, N.Y. 12831 (ph 518 792-0143).



Standard 5-stall section has 8-in. steel curb front and back to contain bedding. Stall framing is made of solid 1 1/2-in. round steel.

ELIMINATES LIFTING OF HEAVY LOGS

New Portable Splitter Splits Logs On Ground

You can split huge, heavy logs right on the ground with the new portable splitter from HWH Corp., Moscow, Iowa.

The new-style splitter rolls on pneumatic tires and can be taken to the logs, rather than having to haul heavy logs to the splitter. Splits logs up to 26 in. long.

The splitting jaw can be raised and lowered, and rotated right or left 180°, to split logs of any diameter as they lay on the ground. One hydraulic lever controls opening and closing of the jaw and a second lever controls the jaw's 12 in. height adjustment. Right or left tilt of the splitting jaw is done manually, with a friction clamp holding the unit in position at the desired angle for each bite.

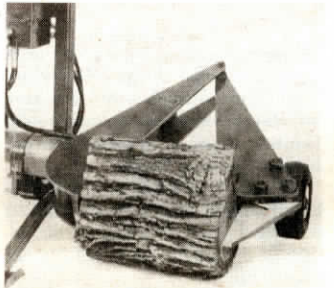
A remote hydraulic pump, driven by a 5 hp engine, provides the hydraulic power. The fast-operating splitting knives close in 14 seconds, then reopen to full width (26 in.) for the next bite in only 3 seconds. Cutting force of the 7 in. long replaceable knives is 13 tons at 2,500 psi.

The portable splitter, with remote hydraulic pump and 5 hp. engine, sells for \$1,600. A 3 pt. hitch model, which operates off the tractor's hydraulics, sells for \$880.

For more information, contact: FARM SHOW Followup, HWH Corp., Rt. 1, Moscow, Iowa 52760 (ph 319 724-3396).



Engine-driven hydraulic pump is available for remote or trailer-mounted operation.



Knife rotates to provide varying cutting positions.

HAULS MANURE, ROCKS, GRAIN, ETC.

Versatile New Wagon Features 90° Dump

"We originally designed it for the farmer who's hauling manure and stacking it but we've found it also works great for hauling rocks, wood, grain, hay and other loads," says Bryce Nesseth, co-owner of N-Tech, Barron, Wis., manufacturer of a new hydraulic-dump wagon. Two hydraulic cylinders (3 1/2 by 24-in.) raise the bed to a near 90° vertical position so even sticky loads dump out.

Wagon comes with a muck gate—a metal plate inserted at an angle at the back of the wagon so material, such as manure is directed to the top of the pile. Wagon also has a removable tailgate that swings open from the bottom. Tailgate also has a grain chute door.

Wagon's floor is 10-ga. steel. Nesseth notes that for hauling rocks, you'd want to put in a 1-in. floor or wooden planks to protect the floor.

The 4-ton model wagon is 64-in. wide, 10-ft. long, and holds 65 bu. of



Steep dump angle completely empties even stickiest of materials.

grain. With optional 3-ft. sideboards it can haul 250 bu. An 8-ton model is also available.

Four-ton model sells for \$3,100.

For more information, contact: FARM SHOW Followup, N-Tech, Inc., Box 136, Barron, Wis. 54812 (ph 715 537-9207).