



The 30 by 48-in. "tubs" can be placed anywhere. A built-in flush pan makes for easy disposal of manure.

## INDIVIDUAL ENVIRONMENTALLY CONTROLLED COMPARTMENTS

# New "Condominium" Baby Pig Nursery

A new-style intensive care baby pig "condominium" nursery, featuring individual environmentally-controlled compartments inside a polyethylene tub, allows hog producers to wean almost one more baby pig per litter, according to Professional Nutrition Management, Ireton, Iowa.

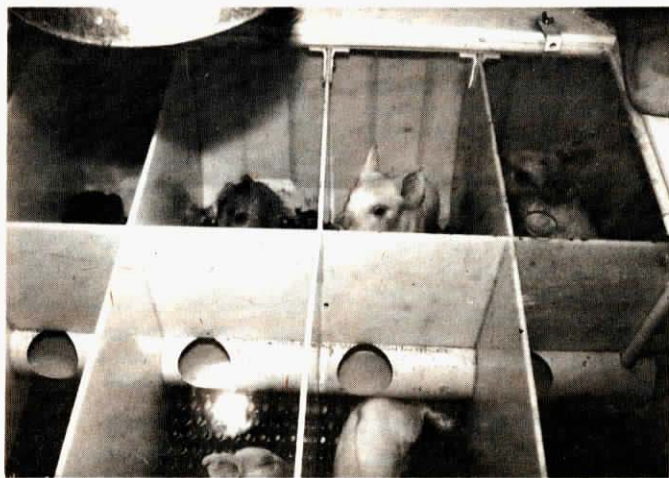
The nursery, introduced recently at the World Pork Expo in Des Moines, Iowa, isolates small pigs that have a hard time competing for food with larger mates or were born to a sow that has stopped lactating or has died. Its 10 compartments are equipped with a positive pressure ventilation system and an adjustable, thermostatically-controlled heating system. The compartments, which also contain a trough for

milk replacer, are covered by a clear plexiglass lid. You can locate this "tub condominium for pigs" anywhere in your nursery building.

"This is the first intensive care nursery system featuring environmentally-controlled compartments," says Roger Ashley, marketing manager. "The ventilation and temperature control systems keep pigs warm and dry while eliminating toxic ammonia and high humidity.

With a regulated, optimum environment, and a controlled, nutritious diet, this 'tub' can save at least eight of the ten baby pigs that otherwise would have died."

According to Ashley, one out of four baby pigs born alive dies before it reaches



Each of the 10 individual compartments are equipped with a milk replacer trough.

weaning age. "We concentrate on saving the pigs that would die, due to various causes, during the first four or five days of life. By having each baby pig isolated into its own compartment, stress is minimized and pigs are kept clean and dry," says Ashley. "Each pig can receive milk replacer without competition or interference from other pigs."

The "tub" is 30 in. wide and 48 in. long, and is supported by a horizontal framework and bolt-on legs. There's a built-in flush pan with a 2-in. valve for easy disposal of manure. Inside, a squirrel cage fan with its own air distribution system, supplies air to the pigs. The ventilation ductwork and water supply lines are hidden under a "plank" that forms the perimeter of the tub.

All tubs are equipped with coated flooring. "The coated flooring is 10% warmer than conventional steel flooring, so the units stay warmer, thus reducing incidence of pneumonia common to small baby pigs,"

says Ashley.

Also available are "starter" and "orphanage" tubs. Unlike the "condominium" tub, the "starter" unit is divided into two compartments each of which is fitted with a nipple watering system and dry feed bin. "The starter unit is designed for pigs that are doing well but need more time to adjust to dry feed," says Ashley. "It helps baby pigs get used to other pigs while making the adjustment."

The "orphanage" unit is completely open, and is designed for pigs about to enter the nursery. It can be used with milk replacer, dry starter feeds and water.

The orphanage unit sells for \$285, the starter unit for \$550, and the "condominium" nursery unit for \$695.

For more information, contact: FARM SHOW Followup, Professional Nutrition Management, Ireton, Iowa 51027 (ph 712 278-2396).

## RADIANT HEAT USES 40% LESS ELECTRICITY THAN HEAT LAMPS

# "Piggy Bank" Creep Pen

If you're looking for a creep pen that can save piglets as well as utility costs, you might want to check out the new "Piggy Bank," an enclosed side creep pen which radiates heat from inside its top cover.

According to the manufacturer, Rig-Mor Industries of Winnipeg, Manitoba, the "Piggy Bank" uses up to 40% less electricity and operates at lower and safer temperatures than conventional creep pens containing heat lamps. The unit was recently introduced at the Western Canada Farm Progress Show in Regina.

"This is the first enclosed side creep pen to use radiant heat," says Scott Rigney, co-owner of the company. "The 1-ft. wide radiant heat strip at the top of the pen can be thermostatically controlled and operates at a maximum temperature of 212° F, which is much lower than heat lamps. Lower temperatures mean less chance of accidental fire and higher energy efficiency. The heat strip, combined with insulation in the top, bottom and sides, cuts electricity costs by at least 40% compared to heat lamp-equipped creep pens."

Rigney says radiant heat is also more even, helping to eliminate draft problems

associated with other creep pen designs. As a result, more baby pigs survive at weaning time. "We think the 'Piggy Bank' can save one pig every second litter - a pig that normally would be lost to pneumonia and scours. Of course, the creep pen also protects piglets both from crushing and occasional cannibalism," notes Rigney.

Made of 20 ga. galvanized steel, the "Piggy Bank" is 4 ft. long, 16 in. wide, 14 in. high and weighs 50 lbs. It's designed to fit against the wall, about 4 in. from the farrowing crate, in a standard 5 by 7 ft. farrowing pen. Each "Piggy Bank" holds 8 to 14 baby pigs from birth to three weeks old.

The hinged top cover, which can be used as an "inspection lid", is lined with fiberglass insulation. The radiant heat strip has galvanized steel backing and is encased by a plastic sheet and a layer of fiberglass insulation. There's an inch of dead air space between the insulation and the outside of the cover to capture any lost heat.

A series of vertical plastic baffles covers the pen's side opening, holding heat inside as the pigs enter and exit via a fold-down ramp. By folding up the ramp and sliding the door shut, you can contain the pigs for



Rigney shows off radiant heat strip which is attached to the underside of top cover.

inoculation, tail docking or general inspection.

The steel floor, insulated with 1/2 in. of styrofoam, is equipped with a plastic sheet overlaid by a reversible rubber mat. You can clean the mat with a high pressure hose, then put the mat back in with the dry side up. A row of miniature bulbs, mounted on the back wall, provides soft lighting to attract the pigs and to help you inspect them.

Each creep pen retails for \$349 (Canadian).

An optional thermostat, mounted on a 3 ft. high post, is available for each "Piggy

Bank." Or, you can buy a 'multiple pen' thermostat which lets you individually control creep pen temperatures in up to 20 different pens.

The heat unit, thermostat and temperature sensor are available as a separate package to replace the heating system in your existing creep pen. Cost is about \$100 depending on size of the heating unit.

For more information, contact: FARM SHOW Followup, Rig-Mor Industries, 156 Woodlawn Ave., Winnipeg, Manitoba, Canada R2M 2P6 (ph 204 253-0883).