

YOU CAN EVEN HANG IT ON YOUR CAMPER TRAILER FOR USE ON THE ROAD

New "Flat Plate" Satellite Antenna

"This design has been used by the military since 1957," says Fred White of Future Communications, Inc., a Colorado company that's manufacturing a new flat plate satellite antenna.

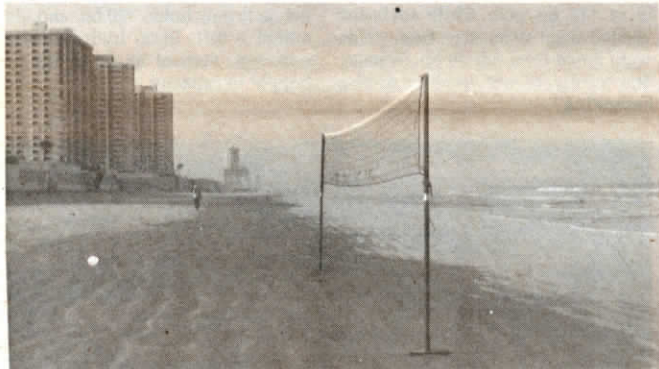
Unlike satellite dishes that require precise placement and lots of room to set up, the flat plate antenna simply hangs on the side of the house or mobile home. It easily comes down for trips on the road in a camper or recreational vehicle.

The antenna looks like a solar panel. White says it receives signals directly, unlike dishes that reflect the signal to a receiver. Sizes range from 3 by 3-ft. to 6 by 6-ft. and prices range from \$500 to \$1,200, depending on how many channels and satellites you want to tap into.

For more information, contact: FARM SHOW Followup, Future Communications, Inc., 3624 Citadel Dr. No. Suite 239, Colorado Springs, Colo. 80909 (ph 303 591-9683).



Flat plate antenna looks like a solar panel.



Net posts stay upright, even if you pull down on the net.

HOLDS TIGHT EVEN IN SAND

Farmer Invents "Stand Alone" Volleyball Net

"We have 7 athletic children and our favorite family sport is volleyball. This new net lets us play anywhere," says Illinois farmer Earl Nauman, of Amboy, who's come up with a lightweight stand-alone net that'll set up anywhere with no need to tie to trees or permanent posts.

The volleyball set consists of two poles and bases that disassemble into three pieces each. The base of each pole is simply eased into the ground by applying foot pressure to one corner of the base and rocking the pole back and forth by hand. Once the poles are inserted, the net is attached.

Set-up takes just 10 min. No tools are required to put it up or take it

down and there are no guy wires to endanger players. The poles do no damage to the lawn and the wide design of the posts keeps them from falling below the horizontal, even if you pull down on the net. The poles even set up in sand.

"It's completely portable and weighs only 60 lbs. It can also be used for tennis, badminton and as a temporary clothes line," notes Nauman.

A set of poles sells for \$147. Nets and a carrying case are also available.

For more information, contact: FARM SHOW Followup, Earl J. Nauman, 1003 U. S. Rt. 52, Amboy, Ill. 61310 (ph 815 857-2186).

FARM SHOW

New Products Especially For Women And The Farm, Ranch Home.

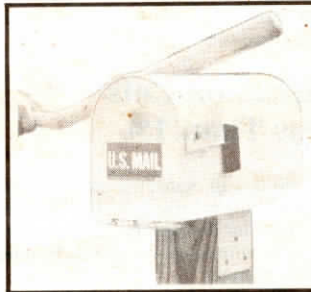
BUILT LIKE A SAFE

"Vandal-Proof" Mailbox

"It's the first truly indestructible mailbox," says Sporty's Tool Co., Batavia, Ohio, about the company's new mailbox.

Postmaster General approved, it's built like a safe. It weighs 50 lbs. and is 21 in. long, 7½ in. wide and 10½ in. tall. The entire box is made of 7-ga. carbon steel throughout — even the

For more information, contact: FARM SHOW Followup, Sporty's Tool Company, Clermont Airport, Batavia, Ohio 45103 (ph 513 732-2411).



Box doesn't even dent when hit by a baseball bat.

pivoting flag. Another layer of 7-ga. steel reinforces the door frame. All seams are welded full-length and the box has an 8 mil thick layer of paint applied in four coats.

Even the mailbox door is sturdily designed. Besides being 3/16-in. thick, it has a specially-designed hinged door that provides full travel until it hits the post.

The mailbox's mounting bracket is welded to the box and fits 6 by 6-in. posts.

In company testing the mailbox withstood being slammed into concrete, being hammered on with a baseball bat and even having two M-80 explosives detonated inside.

Sells for \$175, plus \$3.50 shipping. A larger mailbox (23½ by 10½ by 13 in. and weighing 60 lbs.) sells for \$210.

Two-Door Mailbox

Feeling unsafe while standing with his back to busy traffic when getting the mail, Robert Sperstad, Stoughton, Wis., put a "back door" on his mailbox.

This way, children or adults can reach in from the back of the box, away from the road, and get the mail, or put in outgoing mail. "With the new-style box, I feel safer about having kids run out to get the mail and don't have to worry about them having their back to the road," says Sperstad.

He removed the back end of his conventional large size mailbox and replaced it with the



front door from a second mailbox. He then riveted in the new door. "My two-door mailbox looks the same both front and back. Since the new back door swings open just like the front, you need to make sure the box sits on the post properly for both doors to open," he notes.