

## SAFE FOR PETS

# New Pocket Gopher Trap

"It's easy to use, easy to set and catches lots of gophers," says Bill Dunham about his new-style pocket gopher trap.

Called the Gopher Catcher, it's a wooden box 8 in. long and 4 in. high, with the bottom and one end open. The opposite end is enclosed and has a 1/2 in. dia. hole in its middle. On top is a spring made of galvanized and copper-coated metal.

To use the trap, you first dig around the edge of a fresh gopher mound with a spade to locate the runway entry hole. You then dig out an area about 1 ft. long and 6 in. deep.

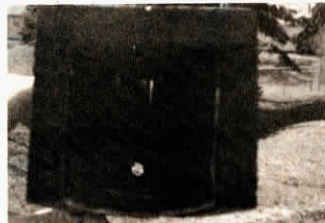
Place the trap in the excavated area with the open end flush over the hole. "Pocket gophers can't stand fresh air or sunlight so they'll try to fill up the small hole on the far end of the trap," explains Dunham. "To fill the hole, they must pass through the trap. As they do, they trip a trigger which releases the spring. As the spring pops up, it pulls a metal rod which catches and pinches the gopher behind the front legs and kills it almost instantly."

Dunham makes the traps in his garage. "I never had much luck with conventional metal rodent traps. When they obstruct the runway, the gopher simply digs a new path around the obstruction. With my new trap, the gopher sees an open hole and comes right into the trap.

"It's also easier and safer to set than conventional metal traps. You just push down on the spring and set the metal rod —



New Gopher Catcher is 8 in. long and 4 in. high with the bottom and one end open.



Gophers get caught when they enter the trap to fill up a small hole in the "closed" end of the trap.

it's as simple as setting a mouse trap. Pets are too big to get into the trap so they can't get hurt by it."

The Gopher Catcher trap sells for \$5, plus postage.

For more information, contact: FARM SHOW Followup, Bill Dunham, P.O. Box 1126, Sherman, Texas 75090 (ph 214 465-3699).

## NO NEED TO WEAR PROTECTIVE GEAR

# "Remote Control" Electric Dipper

A new electric-powered cattle dipper reduces chemical exposure, virtually eliminates spills, and automatically applies exact preset dosages. What's more, the "remote control" applicator lets you move freely up and down the alley or the chute, with the chemical container set back out of the way.

Available in 5 and 30 gal. capacities, the new dipper is designed for any "pour-on" application, including control of grubs and lice. Unlike conventional pour-on applicators, which use a hand dipper and an open chemical vat, it has a 25 ft. hose with an open-ended wand and a pour-on spout.

"You preset for the desired application rate, then hit the remote control switch," says Mike Miller, Miller Plastics Division, manufacturer. "It's a safe unit to use. You're not reaching with a hand dipper into an open chemical container, moving it across your body and possibly splashing chemicals over the floor or on your skin. There's less waste and you don't need to wear slicker suits or rubber gloves to protect yourself."

The "remote control" electric dipper applies 2 to 12 oz. of chemicals at a time which makes it equally effective for big and small livestock operations alike, notes Miller. "If you have a small operation with cattle of varying sizes and weights, you don't have to reset the dial for each animal. Instead, you can set the dial for the average size of your smallest animals and then use multiple applications for larger animals."



Preset the application rate and then hit the remote control switch. No need to dip into open chemical container.

An optional labor-saving "trough applicator", which replaces the wand, is suspended over the animal in the chute. Fluid is automatically pumped into the trough, and applied to the entire animal at once. Miller custom builds troughs to fit various size chutes.

The company is selling the patent-pending unit through animal health chemical manufacturers and distributors.

For more information, contact: FARM SHOW Followup, Miller Plastics Division, 115 Patton Road, Great Bend, Kansas 67530 (ph 800 782-6060, in Kansas 800 772-6060 or 316 792-4388).



Metal floorboard helps reduce foot injuries and protects against stumps and rocks.

## DESIGNED TO HELP PREVENT INJURIES

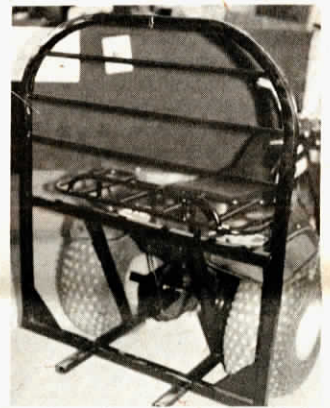
# Safety Update Kit For 3-Wheel ATV's

"We think it's a giant step towards making 3-wheel ATV's safer to operate," says Butch Schulte, manufacturer-marketer of a safety "update" kit that consists of:

1. A heavy metal floorboard designed to help reduce foot injuries, and to help protect against stumps and rocks. Sells for \$150.
2. A drag bar add-on, designed to help reduce backward tipping.
3. Utility rack. It mounts on the back side and serves as a large frame for carrying toolboxes, fence posts and other cargo. Sells for \$100.

Schulte is setting up manufacturing and plans to offer the three add-ons as a package, or as separate items.

For more information, contact: FARM SHOW Followup, WCR Inc., c/o Butch Schulte, Rt. 1, Box 228, Litchfield, Minn. 55355 (612 693-2241).



Drag bar reduces the chance of backward tipping. Utility rack carries cargo.

## LETS YOU FILL THREE HOPPERS AT ONCE

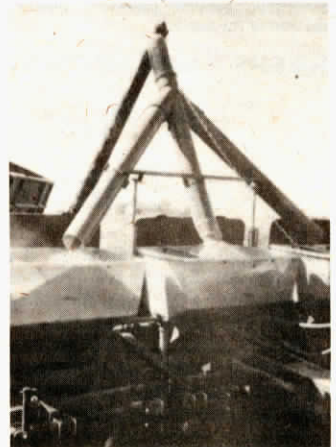
# "Fertilizer Filler" For Max Emerge Planters

You'll like this farmer-built "fertilizer filler" that lets you fill three fertilizer hoppers at once on a 6-row Deere Max-Emerge planter.

The 3-legged attachment is made out of PVC plastic pipe mounted on a lightweight metal bracket. Fertilizer is augered into the single opening on the upper end of the unit. The unit fills one hopper at a time. As each PVC pipe backfills, fertilizer drops into the next hopper. The three legs boost the fertilizer carrying capacity of the planter by about 300 lbs. There's room between the bottom of each leg and the top of the hopper to put hopper covers back on when needed.

William Rietveld, Chicago Heights, Ill., built the first fertilizer filler for his own use. It works so well he's now going to produce them commercially. They sell for \$350 and can be adapted to other planters.

For more information, contact: FARM SHOW Followup, William Rietveld, 1413 East Joe Orr Road, Chicago Heights, Ill. 60411 (ph 312 758-2455).



Fertilizer is augered into the single opening on the upper end of the unit. As each PVC leg fills, fertilizer drops into the next hopper.