

"In-Row Tiller" has adjustable arm that reaches under bushy trees.

**TILLS AT 3 MPH AND COMES WITHIN AN INCH OF TREE**

## Heavy-Duty Tree Weeder And Tiller

One of the best-built machines we've ever seen for weeding and cultivating trees and vines is the new heavy-duty "In-Row Tiller" from J.N. Mfg., Aberdeen, S. Dak.

Designed for commercial use, it features a self-contained electric-over-hydraulic control system which allows the rig to till at 3 mph and come within an inch or two of individual trees or vines. It adjusts to fit any 3 pt. tractor (40 hp or larger) and mounts or dismounts in less than three minutes, making it fast and easy to move from farm to farm when jointly owned by neighboring farmers, or a Soil Conservation District or other local association.

The In-Row Tiller's adjustable arm moves out away from the tractor to reach under bushy trees. A hydraulic cylinder applies down pressure on the arm to keep the head from digging too deep, or not deep

enough, yet allows the head to follow the contour of the ground as it moves.

The arm and head can be adjusted with a simple touch of a switch while the machine is in operation. A touch of the switch moves the rotary head back away from the tree. When the switch is released, the head automatically goes back into the row.

The rotary head is run by an orbit motor and has coil teeth which will tear out any size weed without plugging or wrapping. It can be tilted down to pull dirt out of the row, or tilted up to pull dirt into the row. Ball bearings are used on the orbit motor driving the head and at all joints.

Sells for \$10,000.

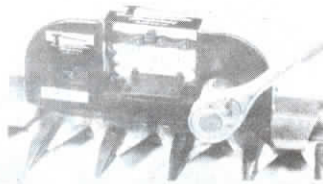
For more information, contact: FARM SHOW Followup, J.N. Manufacturing, 4505 N. Dakota St., Aberdeen, S. Dak. 57401 (ph 605 226-3855).

**MAKES IT EASY TO TO REMOVE OR INSTALL ANY SICKLE**

## Hand-Cranked Sickle Remover

That hand-operated sickle remover and installer we told you about (Vol. 15, No. 4), invented by a Minnesota farmer has been taken over by a manufacturer and is now on the market.

Tebben Mfg. says its sickle remover and installer is designed for use on most types of haybines, swathers, combines, and sickle mowers that have 3-in. riveted or bolted sickle sections. The hand-crank device has special cleats welded onto roller chain. To install, remove the sickle guard nearest the sickle head and bolt the sickle remover in its place. The cleats press against individual section rivets, or bolts, to drive the sickle. You turn the crank clockwise to install the sickle and counter-clockwise to remove it. "It's easy to use, saves time and labor, and eliminates sickle damage due to prying,

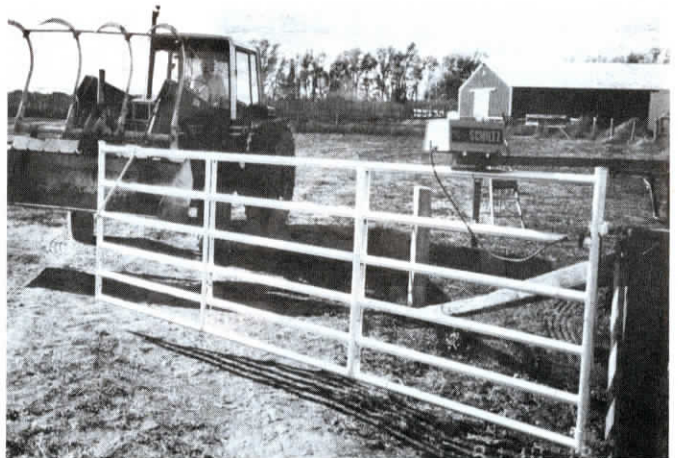


New sickle remover and installer can be operated by a ratchet socket.

pounding, or pulling," says Mike Tebben, vice president.

Sells for \$129.

For more information, contact: FARM SHOW Followup, Tebben Mfg., West Hwy. 7, Clara City, Minn. 56222 (ph 612 847-2200).



To open the swinging gate, simply push two buttons on hand-held control device in cab of pickup, car or tractor.

**EXCLUSIVE "LOCK" PREVENTS OUTSIDE INTERFERENCE**

## Radio Gate Works Like Garage Door Opener

New from Schiltz Mfg., Wessington, S. Dak., is "the only radio-controlled farm gate equipped with an exclusive 'lock' to prevent outside interference — such as CB radios, airplanes or lightning— from activating the garage-door type gate opener unexpectedly."

The hand-held control device, which you carry in the cab of your pickup, car or tractor, has two buttons — one marked "lock" and the other marked "gate". To open the swinging gate, you push both buttons — the "lock" to turn the receiver on and the "gate" button to activate the chain-driven opener mounted on the gate.

A "tension sensor" makes the gate automatically reverse itself if it hits an obstruction while opening.

"Another key feature is that the combina-

tion control box and gate opener are one unit, making it easy to mount on top of the gate where it's out of the way of livestock and snow. For gates used only seasonally, the unit can be easily moved from one gate to the next," the manufacturer points out.

"Most automatic gate openers have only about 10 in. of travel on the opening arm or boom. Ours has 36 in. of travel, making it the most versatile opener on the market for farm, home or industrial use."

For driveway gates, frequent visitors can be instructed how to manually open and close the gate. Sells for \$388.

A solar-charged 12 volt battery system will be available soon.

Contact: FARM SHOW Followup, Schiltz Mfg., RR 2 Box 88, Wessington, S. Dak. 57381 (ph 1 800 658-3637).

**LARIAT/NET HOLDS ANIMALS STILL WHILE YOU WORK ON THEM**

## "Net Catcher" Makes Roping Livestock Easy

"We tried lots of different ways to catch calves and finally came up with this new Lariat Net. It worked so well we decided to market it," says Minnesota farmer-manufacturer Robert Aanestad of Agri-Future.

The Lariat Net consists of a nylon net threaded onto a rope lariat. It works on all types of livestock - calves, pigs, goats, poultry, dogs, cats, and even wild animals. You don't have to be a rodeo roper to use it. You just throw it or drop it over the animal.

A big advantage is that once an animal is caught, it's restrained in such a way that you can work on it - giving injections, tagging, castrating, and any other kind of work. "It's gentle yet holds them as long as needed. The nylon netting is lightweight yet strong and won't rot," says Aanestad.

A 4 by 4-ft. net with lariat sells for \$59. Aanestad also sells an innovative digital birth weight scale.

For more information, contact: FARM



Nylon net, threaded onto rope lariat, is thrown over animal and holds it still.

SHOW Followup, Robert D. Aanestad, Agri-Future Co., Rt. 1, Box 189, Isle, Minn. 56342 (ph 612 679-4565).