

Garbage Truck Converted Into "Jumbo" Hay Baler

How about this — an obsolete garbage truck converted into a low-cost compactor for pressing hay into jumbo-sized big bales.

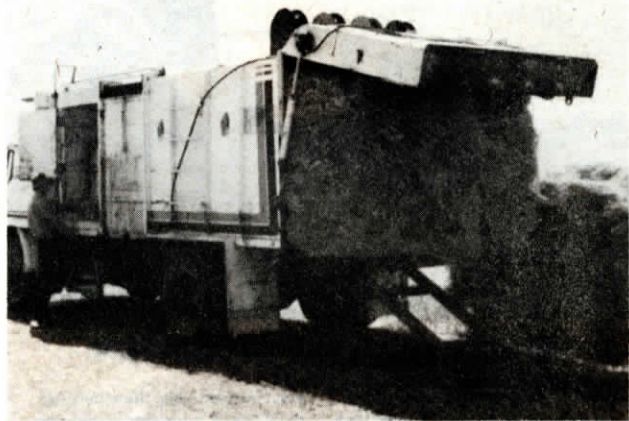
"It really works slick for our specialized haying operation," says inventor Peter Robinson, of Nagambie, Vict.

His specialty cash crop is baled oats hay which is sold to horsebreeders. The standing crop, while still green, is cut and tied into bundles with a binder. Individual bundles are compacted in the home-built baler, with the strings left on, into jumbo bales weighing close to 1 ton. The bales are then loaded onto a semi for shipment, or stacked at the farm and stored for future transport.

Individual bales are tied with four 3/4-in. plastic bands. The bands, drawn from spools, are placed in channels across the

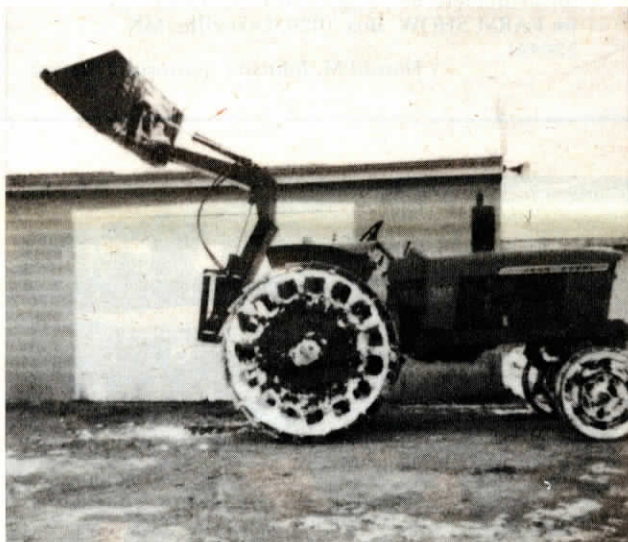
floor of the empty bale chamber. The garbage truck's original 20-ton, double acting hydraulic ram compacts a chamber full of hay — about 15 ft. in length, — to about half that length. The bands are tightened with the bale fully compressed. When the ram is released, the bale expands slightly to its finished size of 5 ft. wide, 5 ft. high and about 9 ft. long.

"Actual compaction is quite rapid and there is no tangling of the hay as with ordinary baling," Robinson told FARM SHOW. He paid \$3,000 for the used garbage truck and compactor, plus an additional \$1,000 for materials used in making the conversion. He speculates that an inventive farmer could probably convert a used garbage compactor into a fully mechanized "one-man"



rig for compacting loose hay into large rectangular bales, or for compacting regular hay bales to half their size to increase the payload for shipping. His labor-intensive operation, using bundled hay pitched in by hand, turns out one big bale every 20 minutes, with half of

that time spent on hand tying. "An innovative farmer could probably convert a used garbage compactor into a one-man rig that compacts and automatically ties loose hay at the rate of one bale every few minutes," Robinson speculates.

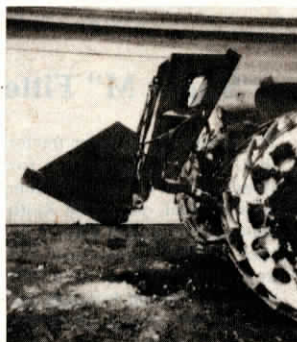


Rear Tractor Loader

"Rear tractor loaders have many advantages over front-end loaders," says Ben Oberholtzer, Millmont, Penn.

"Rear loaders work better in mud or on steep grades because the weight of the loader is a traction booster. You can also turn shorter to get into tight corners. My loader can be put on or taken off in minutes and due to the foldup design the loader is very tough and will handle lots of heavy-duty work without twisting or breaking. The 3-pt. gives tremendous breakaway capacity for digging dirt or tough manure.

"The loader folds back flat against the main frame when at work and the 3-pt. arms and the bucket cylinder are both used to fill the bucket. Once full, the



3-pt. arms raise the loader the first 2 ft. where it can be transported with ease with the boom still against the main frame. When the boom is raised, it goes both up and out. Rollback of the bucket is adjustable on the top



Mud Scraper For Tractor Duals

North Dakota farmer Harvey Bloomquist, of Drayton, built this low-cost scraper to keep his tractor duals from "mudding up".

"I got the idea from mud scrapers used on dual-tired trucks," says Bloomquist. The main horizontal frame is a 2 by 4-in. piece of steel tubing about 10-ft. long. To this, he mounted brackets for attaching it to the tractor's quick coupler. The 2-ft.

long mud scraper bars extend between the tires and are also made of 2 by 4-in. steel tubing. They're bolted to the long main frame so they can freely pivot horizontally between the tires.

Bloomquist estimates the cost to build the scraper to be right at \$100.

Contact: FARM SHOW Followup, Harvey Bloomquist, R.R. 1, Drayton, N. Dak. 58225 (ph 218 455-3863).

link and the dump angle can also be adjusted.

"This loader lifts about the same weight as a front-end loader on a comparable-sized tractor but height, rollback and dump are somewhat limited. And, of course, the idea of going backwards does not appeal to many people. But I feel that I can see the bucket better as I am closer to it.

"Without the bucket, the loader weighs about 450 lbs. and has quick-attach fittings to change quickly. I have made a couple loaders and plan to make more on a custom basis, but am looking for a manufacturer to take over production."

Contact: FARM SHOW Followup, Ben Oberholtzer, Rt. 1, Millmont, Penn. 17845 (ph 717 922-1851).